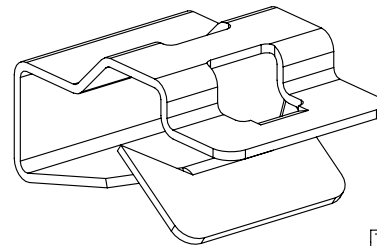
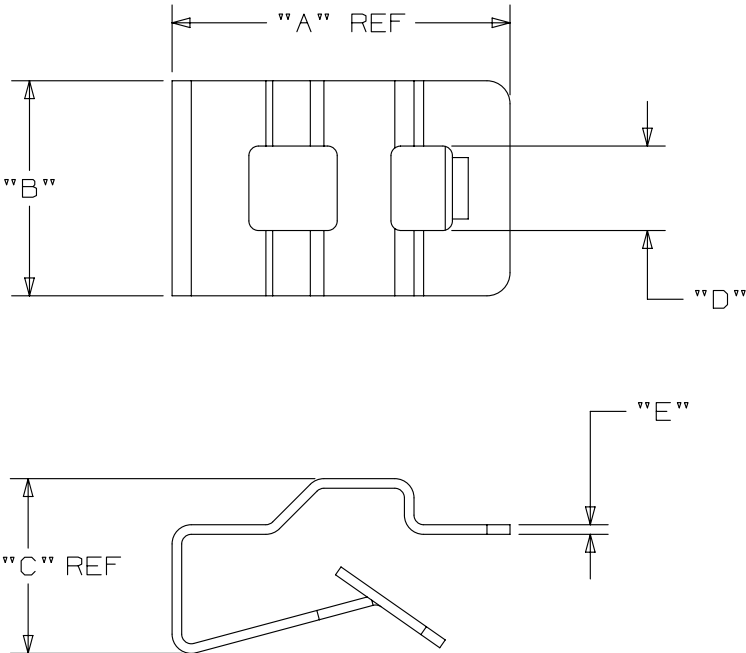


THIS COPY IS PROVIDED ON A RESTRICTED BASIS AND IS NOT TO BE USED IN ANY WAY DETRIMENTAL TO THE INTERESTS OF PANDUIT CORP.

PANDUIT PART NUMBER*	USED WITH THESE CABLE TIES **	PANEL *** THICKNESS	DIMENSIONS INCHES / [MM]					WEIGHT lbs/100 pcs (g)/100 pcs
			A (REF)	B	C (REF)	D	E	
MCMS12-P	M, I, S	0.03 - 0.125 [ 0.76 - 3.18 ]	0.880 [ 22.35 ]	0.560 [ 14.22 ]	0.318 [ 8.08 ]	0.220 [ 5.59 ]	0.025 [ 0.64 ]	0.59 (268)
MCMS25-P		0.125 - 0.240 [ 3.18 - 6.09 ]			0.455 [ 11.56 ]			
MCMS30-P		0.220 - 0.270 [ 5.58 - 6.86 ]			0.535 [ 13.59 ]			

NOTES:

- \* 1. See current price sheet for part number suffix designation for package size.
- \*\* 2. Cable tie cross-section code:  
M - miniature  
I - intermediate  
S - standard
- \*\*\* 3. Refer to table for panel thickness ranges for each product.
- 4. MATERIAL: AISI 1050 STEEL .025" ±.002 THICK  
HEAT TREAT TO RC 46-50 AFTER FORMING  
  
PLATING: ZINC PLATED WITH CLEAR CHROMATE  
CONVERSION COATING PER  
ASTM B 633-85 TYPE III CLASS 1 SC#1 MILD.



MCMS25-P  
(SHOWN)

DIMENSIONS IN BRACKETS ARE METRIC [MM]

TITLE		<b>MCMS--P METAL CLIP ON MOUNT</b>	
CUSTOMER DRAWING			
ITEM REVISION NAME	10B015MV/01	<b>PANDUIT</b>	
DATASET FILE NAME	10B015MV/01 - GB1335BA_REV07		
UNLESS OTHERWISE SPECIFIED, DIMENSIONAL TOLERANCES ARE: IN [mm]		MATERIAL:	
.x ± 0.05 [ 1.3 ]      .xxx ± 0.015 [ 0.38 ]		SEE NOTE 4	
.xx ± 0.02 [ 0.5 ]      ANGLES ± 5 °		DRAWING NUMBER:	
 THIRD ANGLE PROJECTION		GB1335BA	
DRAWN BY	DATE	CHK	SCALE
JAD	9/23/96		FULL
SHT 1 OF 1		SIZE	
		A	

REV	DATE	BY	CHK	APR	DESCRIPTION	ECN
07	12/3/14	MBY	MPH	JADE	REVISED DIM 'C'	GB1335BA/07
06	5/29/14	MBY	MPH	JADE	MADE DIM "A" REF. AND INCREASED .XXX TOLERANCE FROM .010 TO .015. UPDATED TITLE BORDER .	GB1335BA/06

# Mouser Electronics

Authorized Distributor

Click to View Pricing, Inventory, Delivery & Lifecycle Information:

[Panduit:](#)

[MCMS30-P-C](#)