

25A HIGH CURRENT GLASS PASSIVATED SINGLE_PHASE BRIDGE RECTIFIFR
Reverse Voltage - 200 to 1000 V
Forward Current – 25 A
FEATURES

- ✦ The plastic package has Underwriters Laboratory flammability recognition 94V-0
- ✦ Integrally molded heatsink provide very low thermal resistance for maximum heat dissipation
- ✦ Universal 3_way terminals; snap_on, wire wrap_around, or P.C. Board mounting
- ✦ Surge overload ratings to 400 Amperes
- ✦ Glass passivated chip junctions
- ✦ High temperature soldering guaranteed: 260°C/10 seconds at 5lbs., (2.3kg)tension

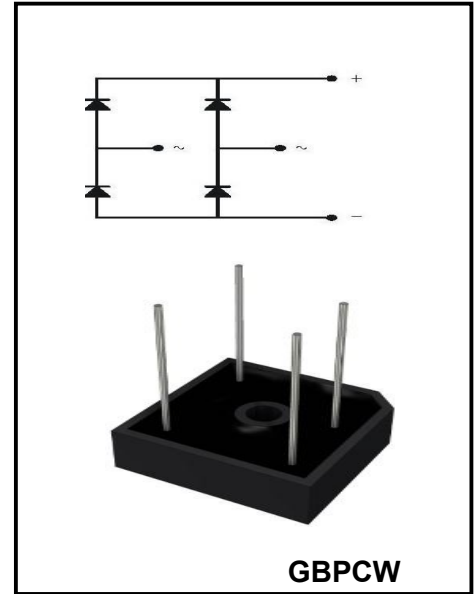
MECHANICAL DATA

- ✦ MECHANICAL DATA Terminals:Nickelplaed.25 " (6.35mm) Faston lugs
- ✦ Mounting position: Bolt doen on heat_sink with Silicone thermal compound between bridge and Mounting surface for maximum heat transfer efficiency. with number 5 screw
- ✦ polarity: polarity symbols molded on body
- ✦ Weight: 12 grams

Maximum Ratings and Electrical characteristics

Ratings at 25 °C ambient temperature unless otherwise specified.

Parameter	Symbols	GBPC 2502W	GBPC 2504W	GBPC 2506W	GBPC 2508W	GBPC 2510W	Units	
Maximum Repetitive Peak Reverse Voltage	V_{RRM}	200	400	600	800	1000	V	
Maximum RMS voltage	V_{RWM}	140	280	420	560	700	V	
Maximum DC Blocking Voltage	V_{RMS}	200	400	600	800	1000	V	
Average rectified forward current (50Hz Sine wave resistance load $T_c=85^{\circ}C$)	I_o	25						A
Peak Surge forward Current (Non-repetitive 50Hz 10ms Sine wave $T_j=25^{\circ}C$)	I_{FSM}	400						A
Dielectric strength (Terminals to case AC 1 minute)	V_{dia}	2						KV
Forward Voltage per element @ $I_F = 12.5A$ and $25^{\circ}C$	V_F	1.05						V
Reverse current($V_R=V_{RM}$)	I_R	10						μA
Thermal reslstance(Junction to Case)	Q_{Jc}	1.5						$^{\circ}C/W$
Operating and Storage Temperature Range	T_j, T_{stg}	-40 ~ 150						$^{\circ}C$



Rating and Characteristic Curves

FIG1:Io-Tc Curve

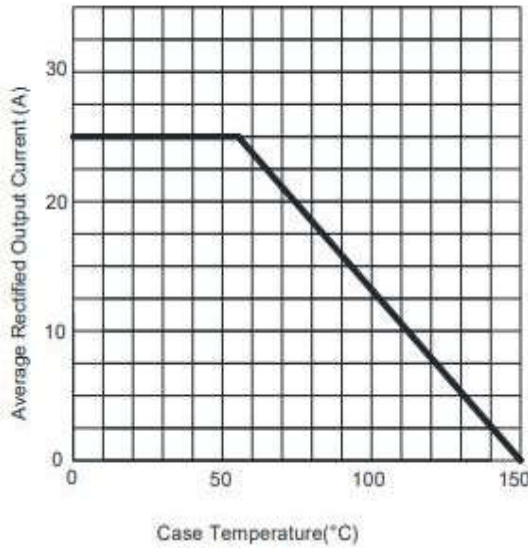


FIG2:Surge Forward Current Capability

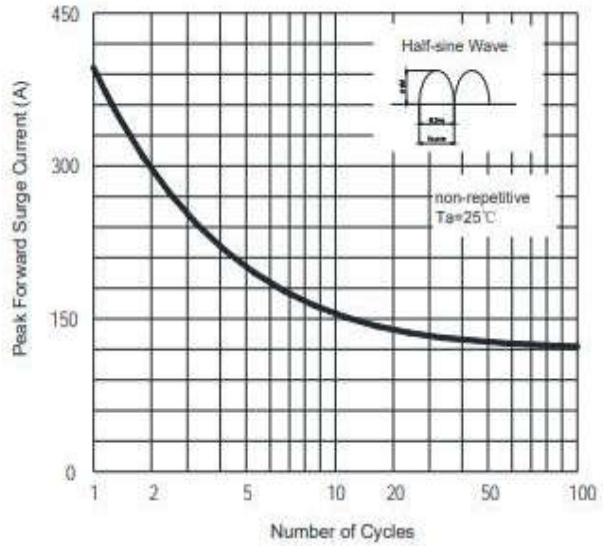


FIG3:Instantaneous Forward Voltage

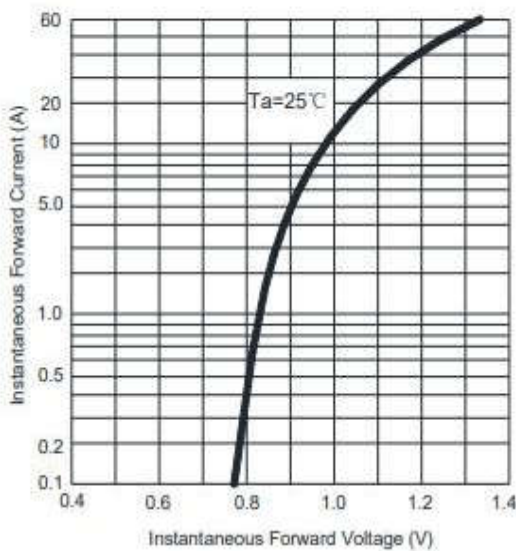
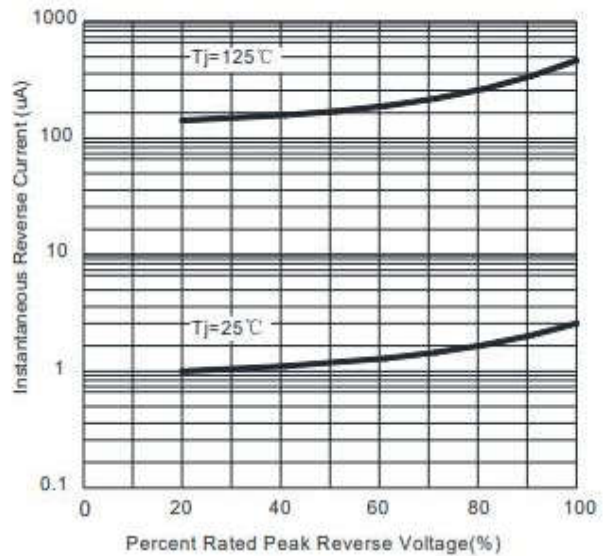
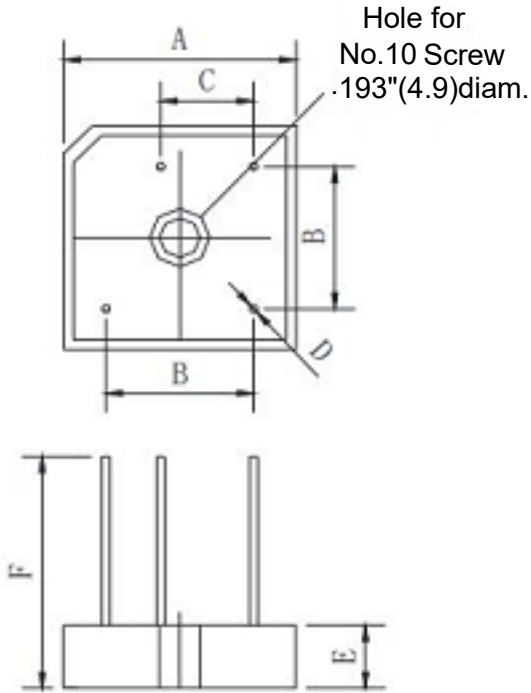


FIG4:Typical Reverse Characteristics





GBPCW

Dim	Min	Max
A	28.2	28.8
B	17.1	19.1
C	10.4	12.4
D	0.95	1.05
E	7.6	8.2
F	30	

Summary of Packing Options

Package	Packing Description	Packing Quantity	Industry Standard
GBPCW	BOX	50	EIA-481-1