

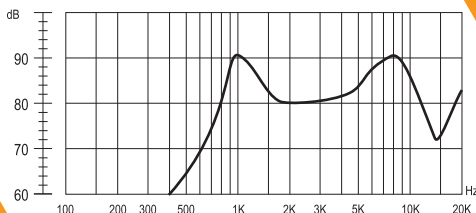
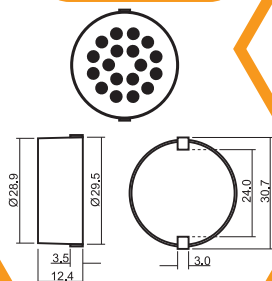
# SoniCrest SPEAKER SOUND GENERATORS

## HSS30A



### Dimension

Unit: mm  
Tolerance : 0.3mm



### Frequency Response

Applied Signal : 0.15W, Sine Wave  
Measuring Distance : 10cm

● **Specification** (all data taken at 25°C unless otherwise specified)

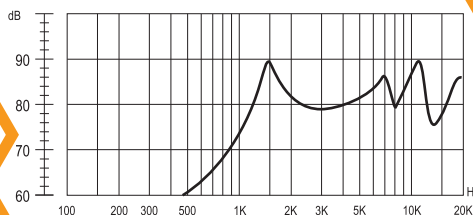
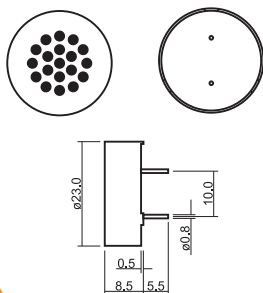
Coil Impedance (Ω)	Rated Power (W)	Maximum Input Power (W)	Resonance Frequency (Hz)	★Frequency Range (Hz)	★Sound Output at 1kHz(dB)	Operating Temp. (°C)	Storage Temp. (°C)	Housing Material	Weight (g)
8 ± 25%	0.15	0.2	1000 ± 15%	600 ~ 5000	88 ± 3	-40 ~ +130	-40 ~ +130	PPS	10

HSS30A

The specifications are only for 8Ω version. Specification for other impedance is available upon request.  
★ Value Applying Rated Input power and Measured at 10cm.

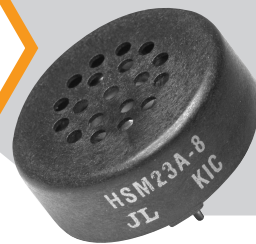
### Dimension

Unit: mm  
Tolerance : 0.3mm



### Frequency Response

Applied Signal : 0.08W, Sine Wave  
Measuring Distance : 10cm



● **Specification** (all data taken at 25°C unless otherwise specified)

Coil Impedance (Ω)	Rated Power (W)	Maximum Input Power (W)	Resonance Frequency (Hz)	★Frequency Range (Hz)	★Sound Output at 1kHz(dB)	Operating Temp. (°C)	Storage Temp. (°C)	Housing Material	Weight (g)
8 ± 20%	0.08	0.15	1900 ± 10%	1000 ~ 5000	73 ± 3	-20 ~ +60	-30 ~ +70	Noryl SE1	3

HSM23A-8

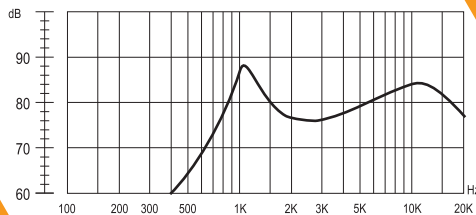
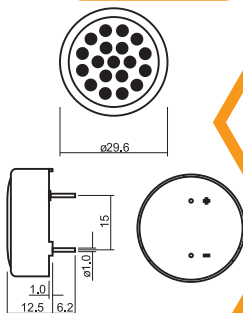
The specifications are only for 8Ω version. Specification for other impedance is available upon request.  
★ Value Applying Rated Input power and Measured at 10cm.

## HSM30A-8



### Dimension

Unit: mm  
Tolerance : 0.3mm



### Frequency Response

Applied Signal : 0.15W, Sine Wave  
Measuring Distance : 10cm

● **Specification** (all data taken at 25°C unless otherwise specified)

Coil Impedance (Ω)	Rated Power (W)	Maximum Input Power (W)	Resonance Frequency (Hz)	★Frequency Range (Hz)	★Sound Output at 1kHz(dB)	Operating Temp. (°C)	Storage Temp. (°C)	Housing Material	Weight (g)
8 ± 20%	0.15	0.2	1200 ± 15%	600 ~ 5000	88 ± 3	-40 ~ +85	-40 ~ +90	Noryl SE1	10

HSM30A-8

The specifications are only for 8Ω version. Specification for other impedance is available upon request.  
★ Value Applying Rated Input power and Measured at 10cm.