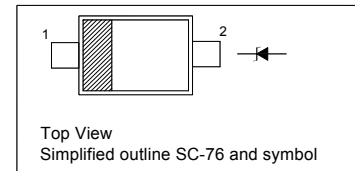


Features

- Total power dissipation : max. 300 mW
- Small plastic package suitable for surface mounted design
- Tolerance approximately $\pm 5\%$

PINNING

PIN	DESCRIPTION
1	Cathode
2	Anode



Absolute Maximum Ratings ($T_a = 25\text{ }^\circ\text{C}$)

Parameter	Symbol	Value	Unit
Power Dissipation	P_{tot}	300	mW
Junction Temperature	T_j	150	$^\circ\text{C}$
Storage Temperature Range	T_{stg}	- 55 to + 150	$^\circ\text{C}$

Characteristics at $T_a = 25\text{ }^\circ\text{C}$

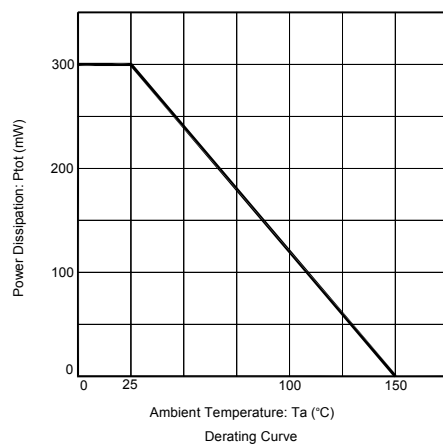
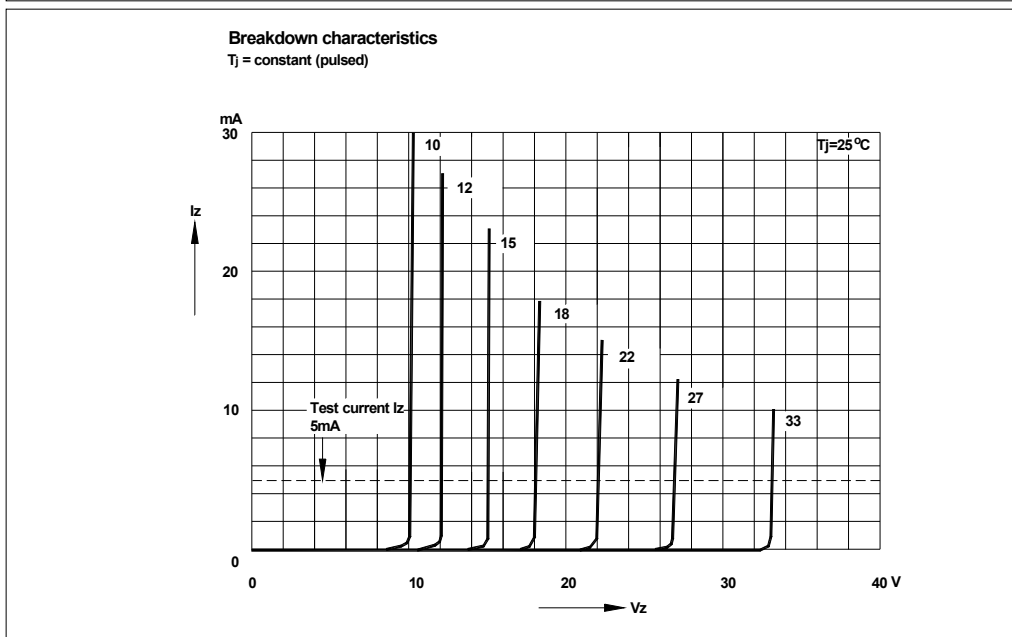
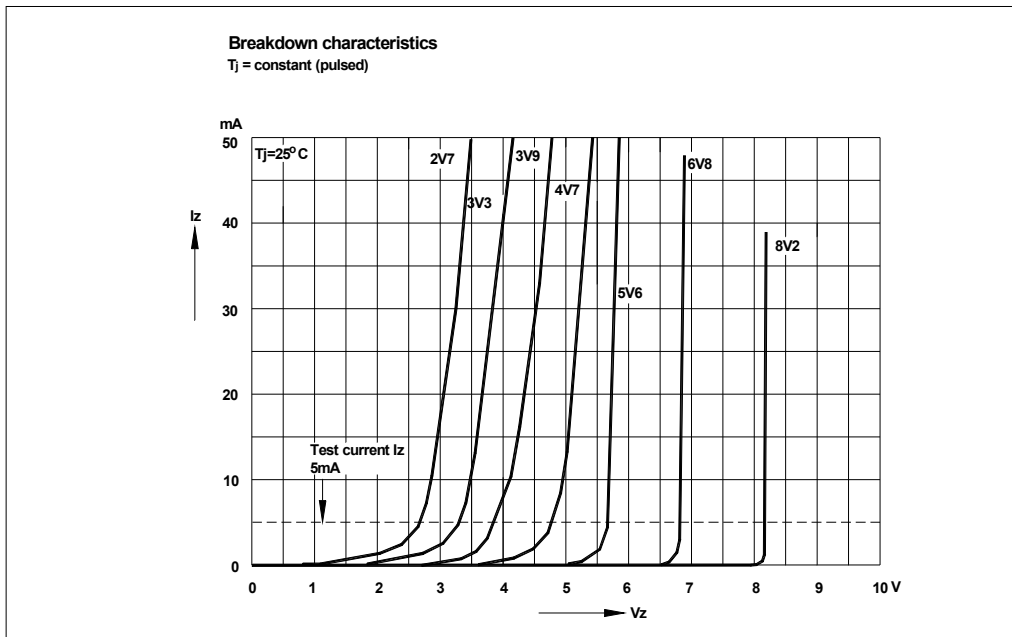
Parameter	Symbol	Max.	Unit
Thermal Resistance Junction to Ambient Air	$R_{\theta JA}$	417	$^\circ\text{C}/\text{W}$
Forward Voltage at $I_F = 10\text{ mA}$	V_F	0.9	V

Product Range

Characteristics at $T_a = 25\text{ °C}$

Type	Marking Code	Zener Voltage Range ¹⁾			Dynamic Impedance		Reverse Leakage Current	
		V_{znom}	V_{ZT}	at I_{ZT}	Z_{ZT}	at I_{ZT}	I_R	at V_R
		(V)	(V)	(mA)	Max. (Ω)	(mA)	Max. (μ A)	(V)
RND MM3Z24	2N	24	22.8...25.6	5	60	5	0.1	19
RND MM3Z18	2J	18	16.8...19.15	5	45	5	0.1	13
RND MM3Z15	2F	15	13.8...15.6	5	40	5	0.1	11
RND MM3Z2V7	1D	2.7	2.5...2.9	5	110	5	120	1
RND MM3Z3V0	1E	3.0	2.8...3.2	5	120	5	50	1
RND MM3Z3V3	1F	3.3	3.1...3.5	5	130	5	20	1
RND MM3Z12	2D	12	11.4...12.7	5	35	5	0.1	9
RND MM3Z3V9	1J	3.9	3.7...4.1	5	130	5	5	1
RND MM3Z4V3	1K	4.3	4...4.6	5	130	5	5	1
RND MM3Z4V7	1M	4.7	4.4...5	5	130	5	2	1
RND MM3Z5V1	1N	5.1	4.8...5.4	5	130	5	2	1.5
RND MM3Z5V6	1P	5.6	5.2...6	5	80	5	1	2.5
RND MM3Z11	2C	11	10.4...11.6	5	35	5	0.1	9
RND MM3Z6V8	1X	6.8	6.4...7.2	5	30	5	0.5	3.5
RND MM3Z10	2B	10	9.4...10.6	5	30	5	0.1	7
RND MM3Z8V2	1Z	8.2	7.7...8.7	5	30	5	0.5	5
RND MM3Z9V1	2A	9.1	8.5...9.6	5	30	5	0.5	6

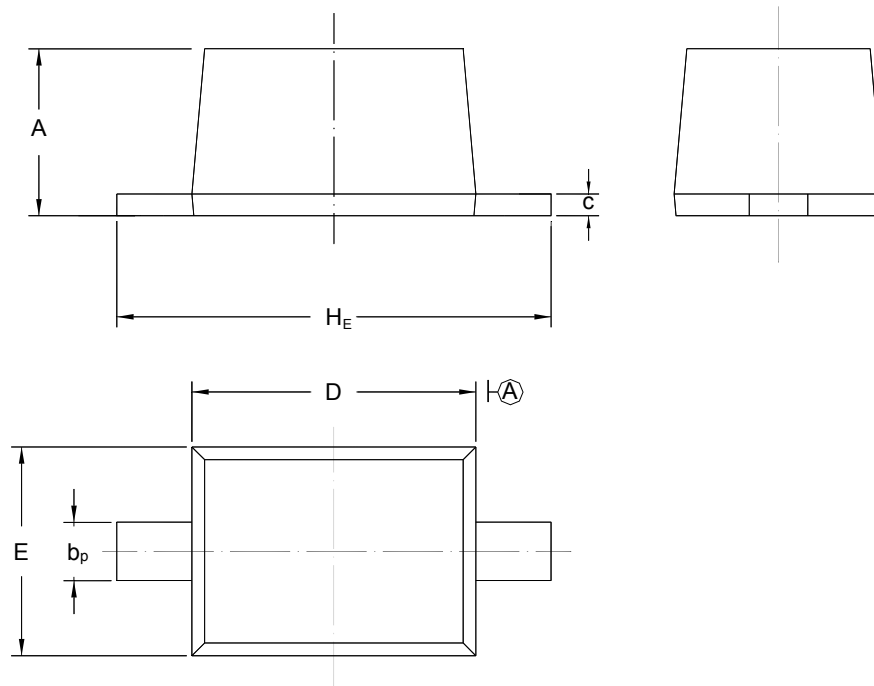
¹⁾ V_{ZT} is tested with pulses (20 ms).



Package Outline

Plastic surface mounted package; 2 leads

SC-76



UNIT	A	b _p	C	D	E	H _E
mm	1.10 0.80	0.40 0.25	0.15 0.10	1.80 1.60	1.35 1.15	2.80 2.30