



Commercial CCS-18

High Power DC-12 GHz Multi - Throw Switch

SP3T to SP6T versions only

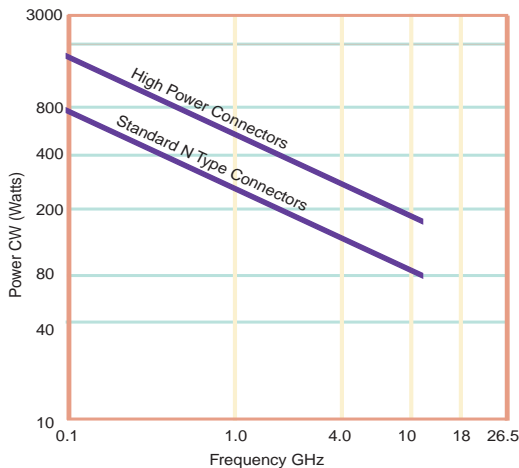
Normally Open

The CCS-18 Switch is a broadband multi-position coaxial switch designed to switch RF signals from one input port to any one of 3 through 6 output ports. It is readily adapted to any 50 Ohms transmission line system. The standard actuator gives individual solenoid control of each position and when de-energized, all positions are open. Standard actuator voltage is 28 VDC. The primary advantage of this switch over the miniature versions shown on previous pages is the higher power handling capability.

Specifications

RF Contacts:	Break before make			
Actuator	Voltage (VDC) 20°C	12	15	28
	Current (mA)	600	480	270
Switching Time:	20 msec max			
Connectors:	SMA (f), TNC(f)(max frequency 11GHz only)*, N Type (f)			
Weight:	9 oz. max (3 Position) 11 oz (6 Position)			
Temperature Range:	-25°C to +65°C (Operating)			
Shock:	MIL-STD-202 Method 213, Condition D (500G Non Operating)			
Vibration:	MIL-STD-202 Method 214, Condition D (10G RMS Non Operating)			
Humidity:	Moisture Seal Available			
Typical Contact Life:	5 Million Cycles			

RF Power Handling



Specifications	DC-1 GHz	1-4 GHz	4-12 GHz (TNC limit 11GHz)
VSWR (max)	1.25:1	1.40:1	1.70:1
Insertion Loss (max)	0.30 dB	0.40 dB	0.50 dB
Isolation (min)	70.0 dB	60.0 dB	60.0 dB



A Unit of Teledyne Electronics and Communications

Specifications subject to change without notice.

www.rfswitches.com
email: switches@teledyne.com

Tel: 800-284-7007

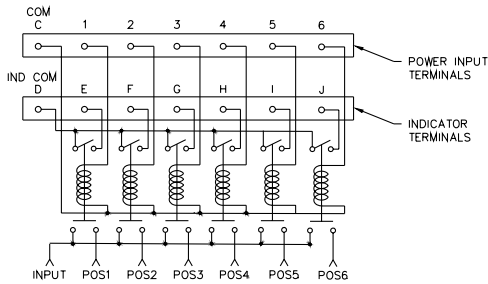
01/2004

Commercial CCS-18

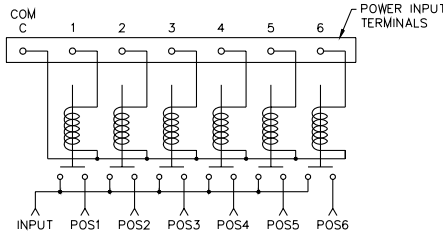
High Power DC-12 GHz Multi - Throw Switch

SP3T to SP6T versions only

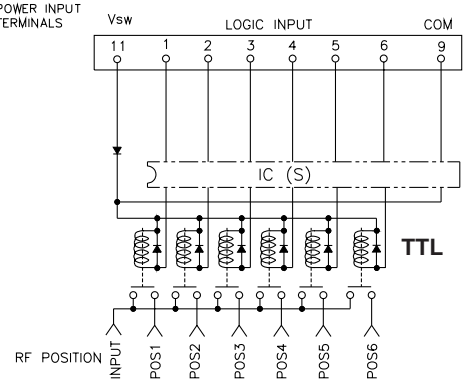
Normally Open



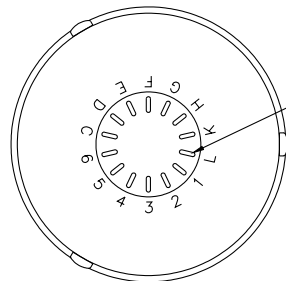
Indicators



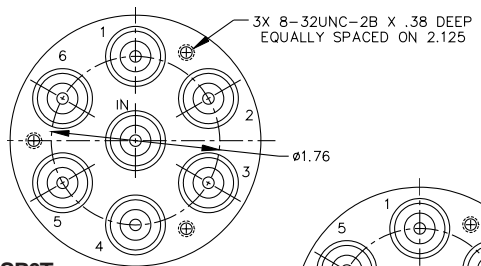
Analog



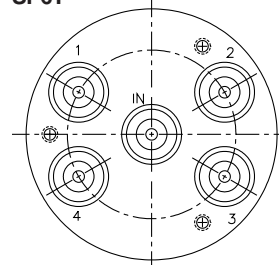
TTL



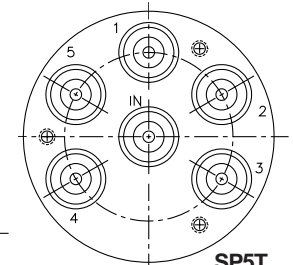
14X SOLDER TERMINALS
SOLDER WIRE USING SN63,
MAXIMUM TEMP 210°C FOR
NO MORE THAN 5 SEC.



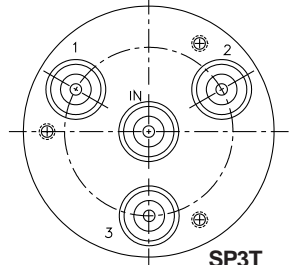
SP6T



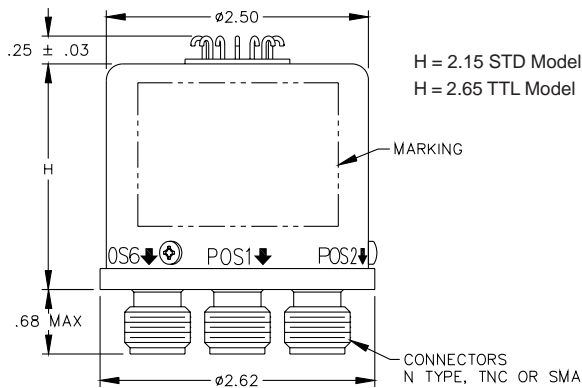
SP4T



SP5T



SP3T

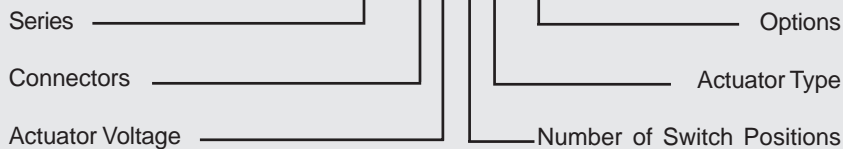


H = 2.15 STD Model
H = 2.65 TTL Model

CONNECTORS
N TYPE, TNC OR SMA

Part Numbering System for CCS-18 (Normally Open)

CCS-18 N 1 5 O - T



Connector	Actuator Voltage	Number of Positions	Actuator Type	Options
S: SMA Female	1: 28Vdc Normally Open	3: SP3T	O: No Indicator Contacts	T: TTL Drivers with Diodes
N: N type Female	2: 15Vdc Normally Open	4: SP4T	C: Indicator Contacts	R: Positive + Common
T: TNC Female*	3: 12Vdc Normally Open	5: SP5T		TD: TTL Driver with Decoder
		6: SP6T		

For other options contact Factory

See additional Datasheet for SP7T and SP8T versions



A Unit of Teledyne Electronics and Communications

Specifications subject to change without notice.

www.rfswitches.com
email: switches@teledyne.com

Tel: 800-284-7007

Mouser Electronics

Authorized Distributor

Click to View Pricing, Inventory, Delivery & Lifecycle Information:

[Teledyne Relays:](#)

[CCS-18N14C](#) [CCS18S180](#)

Mouser Electronics

Authorized Distributor

Click to View Pricing, Inventory, Delivery & Lifecycle Information:

[Teledyne Relays:](#)

[CCS-18N360](#)