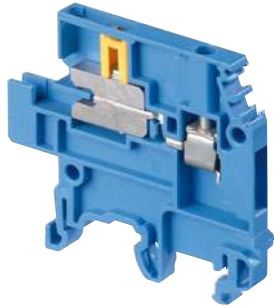
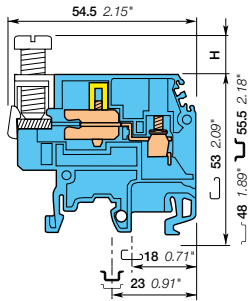


MA2.5/5.NT screw clamp terminal blocks

Neutral disconnect - 5 mm 0.197 in spacing



MA2.5/5.NT



5 mm 0.197 in spacing

Description

- Ease the disconnection of your neutral circuits,
- Compatible with screw clamp terminal blocks, wire size 2.5 mm² (5 mm 0.200 in spacing) to 16 mm² (12 mm 0.473 in spacing).

Ordering details

Description	Color	Type	Part Number	Pkg pce	Weight (1 pce) g
Neutral disconnect For busbar 10 x 3 mm	Blue	MA2.5/5.NT	1SNA125487R0600	50	12.00

Main technical data

		IEC	UL	CSA
1 conductor per clamp	Rigid: Solid/Stranded	0.2-4 mm ²		
	Flexible without ferrule	0.22-2.5 mm ²		
	Flexible with insulated ferrule			
	Gauge	A3		
Rated current / Rated cross section		24 A / 2.5 mm ²		
Rated short-time withstand current (1s)		300 A		
Rated voltage		400 V		
Impulse withstand voltage		6000 V		
Protection			NEMA	

Mounting instructions

	Rail	
Wire stripping length		G32, TH 35-7.5, TH 35-15 10 mm 0.39 in
Screw clamp Tool		Flat screwdriver Ø 3.5 mm Ø 0.14 in
Torque		0.4 - 0.6 N.m 3.5 - 5.3 lb.in
Disconnect device Tool		Flat screwdriver Ø 4 mm Ø 0.16 in
Torque		0.4 - 0.6 N.m 3.5 - 5.3 lb.in

The connecting capacity data for one Rigid: Solid/Stranded, or one Flexible conductor (when applicable) is a mandatory information required by IEC, UL and CSA standards (Copper conductors). All other data are provided as supplementary information only, for more details, please consult our CB, UL or CSA certificates and technical datasheet available on <http://www.TE.com>

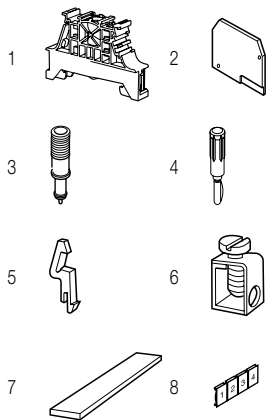
--	--	--	--	--	--	--	--

Accessories

Description	Color	Type	Part Number	Pkg pce	Weight (1 pce) g
1 End stops	Dark grey	BAM4	1SNK900001R0000	50	14.00
		BAZ1	1SNK900002R0000	50	5.30
2 End sections	Grey	FEM6	1SNA118368R1600	20	2.40
3 Test adapters	Green	DCV	1SNA173058R0200	10	2.20
4 Test plugs	Black	FC2	1SNA007865R2600	100	
5 Locking devices	Blue	VRB3	1SNA128035R1600	10	
6 Clamps		SFB1	1SNA163860R0500	50	12.00
		SFB2	1SNA168956R0600	50	11.00
7 Busbars		BO3	1SNA164406R2400	1	
8 Terminal block markers	White	RC510	1SNA231000R0700	1	5.20

Complete list of accessories is indicated in the terminal block datasheet.

Some accessories such as jumper bars may modify the terminal block's ratings: complete information in the accessories catalogue pages.



Technical data valid for copper conductors only