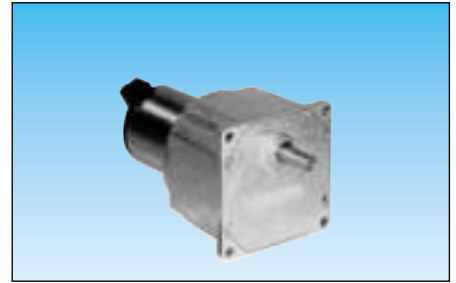


# D.C. geared motors

- High quality, all-metal integral-type gearboxes
- Basic speed range : 7.3 to 616 rpm
- Torque rating : 5 Nm, for long life
- Motors : maximum usable power 9 to 33 W



## Applications

- Motor-driven blinds and shutters
- Opening and closing doors
- Photocopiers : staplers, collators
- Equipment for medical rehabilitation
- X-ray equipment
- Agro-foodstuffs industry
- Motorised point-of-sale displays

1

## Made to order products, available on request

- Motor :**
- other supply voltages
  - shaft lengths at front and/or rear
  - integrated interference suppression 82 830
  - encoders
  - other front and rear fixing plates
  - "high power" motors
- Gearboxes :**
- special shaft
  - special lubrication
  - other reduction ratios

## Types

		80 815 0	80 815 0	80 815 0
<b>Nominal voltage</b>		12 V	24 V	48 V
<b>Standard motor speed (rpm)</b>		2600	2600	2600
<b>Output speeds (rpm)</b>	Ratios (i)	<b>Part numbers</b>		
2600	1800			
616	426	•	•	•
385	266	•	•	•
339.5	235	•	•	•
212	147	•	•	•
170	118	•	•	•
106	73	•	•	•
68	47	•	•	•
53	37	•	•	•
42.5	29.4	•	•	•
21	14.7	•	•	•
10.5	7.4	•	•	•

**Standard gearbox shaft : see dimensions**

## General characteristics

		82 810 0	82 810 0	82 810 0
Motor		82 810 0	82 810 0	82 810 0
Gearbox		81 035 0	81 035 0	81 035 0
Maximum permitted torque on gearbox for continuous rating	N.m	5	5	5
Axial load (dynamic)	daN	6	6	6
Radial load (dynamic)	daN	6	6	6
Maximum usable power	W	10.3	9.5	9
Nominal usable power	W	9.4	8.7	8.2
Gearbox case temperature rise	°C	45	46	45
Weight	g	820	820	820

## Options : for standard products non stocked

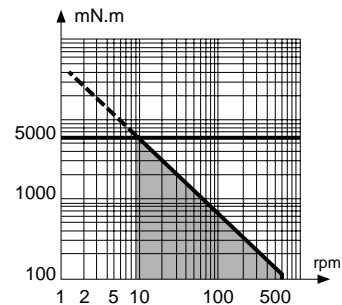
		•	•	•
Output shaft Ø 8 mm 79 290 064		•	•	•
Ball bearings on gearbox output shaft (81 035 5)		•	•	•

## Nominal speed and torque curves

The shaded zone represents the operating range of the geared motor.

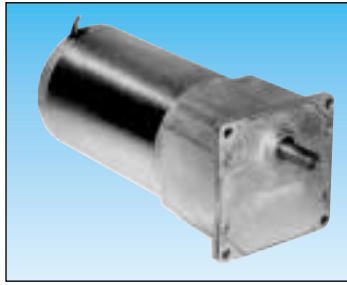
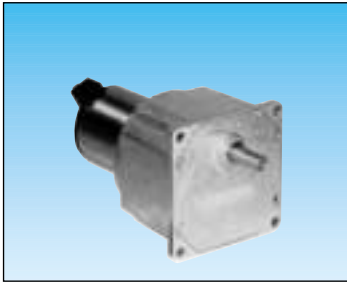
The horizontal line marks the maximum torque available in continuous duty cycle for a given life.

For higher torque ratings, service life will be reduced.



## Other information

For basic principles see pages 1/7.

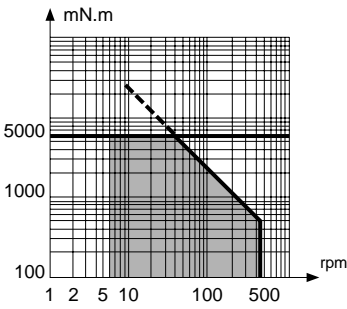
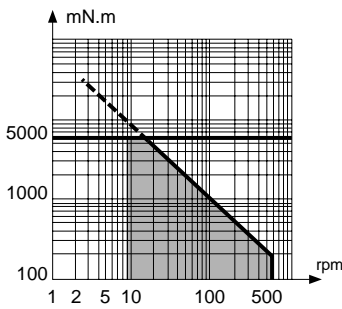


<b>80 805 0</b>	<b>80 805 0</b>	<b>80 805 0</b>	<b>80 835 0</b>	<b>80 835 0</b>	<b>80 835 0</b>
<b>12 V</b>	<b>24 V</b>	<b>48 V</b>	<b>12 V</b>	<b>24 V</b>	<b>48 V</b>
<b>2600</b>	<b>2600</b>	<b>2600</b>	<b>1800</b>	<b>1800</b>	<b>1800</b>

•	•	•	•	•	•
•	•	•	80 835 012	80 835 009	•
•	•	•	•	•	•
•	•	•	80 835 013	80 835 004	•
•	•	•	•	•	•
•	•	•	80 835 014	80 835 002	•
•	•	•	80 835 015	80 835 003	•
•	•	•	•	•	•
•	•	•	80 835 016	80 835 008	•
•	•	•	80 835 017	80 835 006	•
•	•	•	80 835 018	80 835 005	•

<u>82 800 0</u>	<u>82 800 0</u>	<u>82 800 0</u>	<u>82 830 0</u>	<u>82 830 0</u>	<u>82 830 0</u>
<u>81 035 0</u>	<u>81 035 0</u>	<u>81 035 0</u>	<u>81 035 0</u>	<u>81 035 0</u>	<u>81 035 0</u>
<u>5</u>	<u>5</u>	<u>5</u>	<u>5</u>	<u>5</u>	<u>5</u>
<u>6</u>	<u>6</u>	<u>6</u>	<u>6</u>	<u>6</u>	<u>6</u>
<u>6</u>	<u>6</u>	<u>6</u>	<u>6</u>	<u>6</u>	<u>6</u>
<u>16.3</u>	<u>17</u>	<u>16.7</u>	<u>33</u>	<u>33</u>	<u>33</u>
<u>15.7</u>	<u>15.6</u>	<u>15</u>	<u>27</u>	<u>27</u>	<u>27</u>
<u>44</u>	<u>40</u>	<u>45</u>	<u>50</u>	<u>50</u>	<u>50</u>
<u>920</u>	<u>920</u>	<u>920</u>	<u>1540</u>	<u>1540</u>	<u>1540</u>

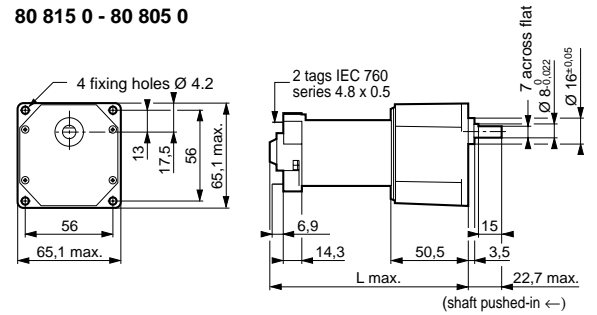
•	•	•	•	•	•
•	•	•	•	•	•



**1**  
**2**  
**3**  
**4**

**Dimensions**

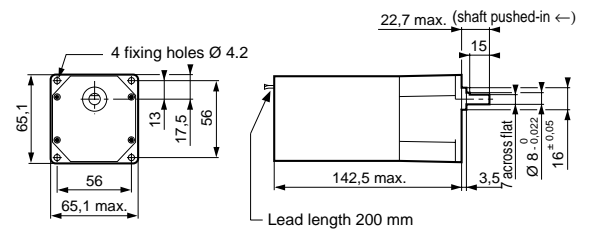
**80 815 0 - 80 805 0**



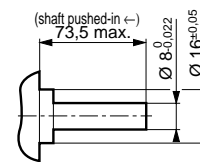
Types	L max (mm)
<b>80 815 0</b>	113.5
<b>80 805 0</b>	128.5

**5**

**80 835 0**



**Non stocked product : gearbox shaft 79 290 064**



**To order, specify :**

Standard products **4** Part number  
Example : D. C. geared motor - 80 835 012

Standard products, non stocked **1** Type **2** Nominal voltage **3** Output speed **4** Standard speed **5** Option  
Example : D. C. geared motor 80 815 0 - 12 V - 2600 rpm - 170 rpm - output shaft 79 290 064