

# Customer Information Sheet

DRAWING No.: M22-302XX00 SHEET 2 OF 2

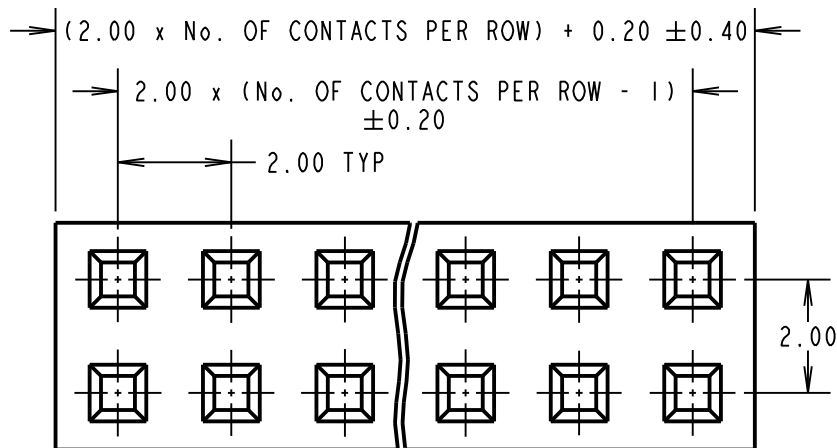
IF IN DOUBT - ASK

©

NOT TO SCALE

THIRD ANGLE PROJECTION

ALL DIMENSIONS IN mm



**NOTES:**

1. TO BE USED WITH CRIMP CONTACTS M22-30400XX (REELED) OR M22-30500XX (LOOSE).
2. ALL TOLERANCES ARE  $\pm 0.10$  UNLESS OTHERWISE STATED.
3. TRIANGLE PIN INDICATOR IS ON PIN 1 AND EVERY 5th PIN AFTER.
4. MATING PIN LENGTH = 4.5mm MAX  
4.0mm MIN

**OBSOLETE**  
All other sizes  
not listed below

**SPECIFICATION:**

**MATERIAL**

MOULDING = NYLON 66 UL94V-2, BLACK

**ELECTRICAL:**

CURRENT RATING = 1A AC/DC

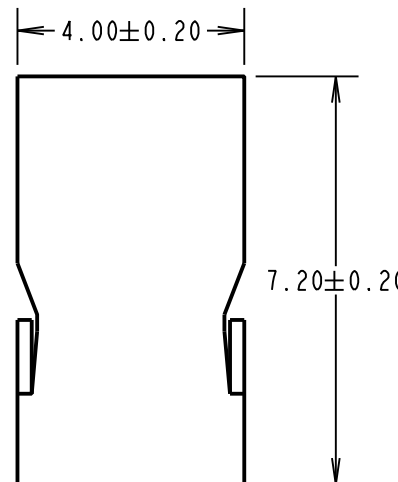
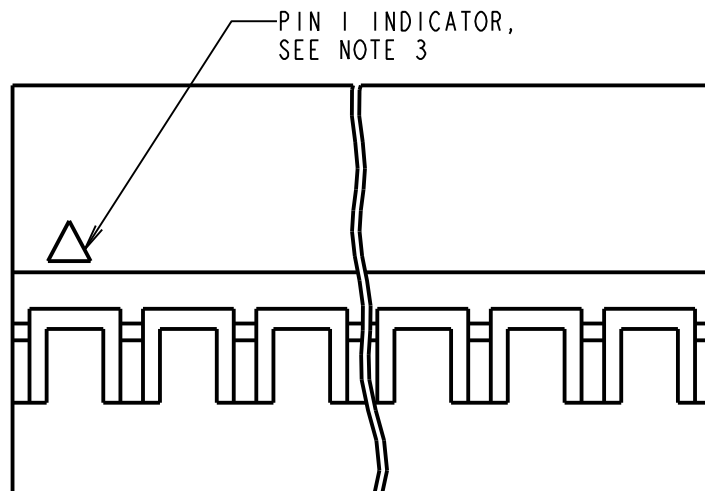
VOLTAGE RATING = 250V AC/DC

DIELECTRIC WITHSTANDING VOLTAGE = 800V AC FOR ONE MINUTE

INSULATION RESISTANCE = 1000M $\Omega$  MIN

**ENVIRONMENTAL:**

OPERATING TEMPERATURE = -25°C TO +85°C



**Active products:**

M22-3020200	M22-3020900
M22-3020300	M22-3021000
M22-3020400	M22-3021200
M22-3020500	M22-3021600
M22-3020600	M22-3021700
M22-3020700	M22-3021800
M22-3020800	M22-3022000

ORDER CODE:

**M22-302XX00**

No. OF CONTACTS PER ROW:

~~02 TO 20~~

MSP	13	24.07.17	20286
NAME	ISS.	DATE	C/NOTE
APPROVED: M.PERREN			
CHECKED: M.PLESTED			
DRAWN: A. LIOTTA			
CUSTOMER REF.:			
ASSEMBLY DRG:			

**HARWIN**

www.harwin.com  
technical@harwin.com

THIS DRAWING AND ANY INFORMATION OR DESCRIPTIVE MATTER SET OUT HEREON ARE CONFIDENTIAL AND COPYRIGHT PROPERTY OF THE HARWIN GROUP AND MUST NOT BE DISCLOSED, LOANED, COPIED OR USED FOR MANUFACTURING, TENDERING OR FOR ANY OTHER PURPOSE WITHOUT THEIR WRITTEN PERMISSION.

**TOLERANCES**  
X. =  $\pm 1$ mm  
X.X =  $\pm 0.50$ mm  
X.XX =  $\pm 0.10$ mm  
X.XXX =  $\pm 0.01$ mm  
**ANGLES =  $\pm 5^\circ$**   
**UNLESS STATED**

**MATERIAL:**

SEE ABOVE

**FINISH:** SEE ABOVE

**S/AREA:** mm<sup>2</sup>

**TITLE:**

2.00mm DIL CRIMP  
SOCKET HOUSING

**DRAWING NUMBER:**

**M22-302XX00**

SHT  
2 OF 2

# Mouser Electronics

Authorized Distributor

Click to View Pricing, Inventory, Delivery & Lifecycle Information:

[Harwin:](#)

[M22-3020900](#) [M22-3021300](#) [M22-3020500](#) [M22-3021700](#) [M22-3021500](#) [M22-3020300](#) [M22-3020700](#) [M22-3021900](#) [M22-3021100](#) [M22-3021000](#) [M22-3020600](#) [M22-3021800](#) [M22-3021400](#) [M22-3020200](#) [M22-3020800](#)  
[M22-3021200](#) [M22-3022000](#) [M22-3020400](#) [M22-3021600](#)