

Customer Information Sheet

DRAWING No.: M80-898XXXX

IF IN DOUBT - ASK

©

NOT TO SCALE

THIRD ANGLE PROJECTION

ALL DIMENSIONS IN mm

BRITISH STANDARD

ORDER CODE: TO BS9525 F0033

B5740-1XX-F-C-X

TOTAL No. OF CONTACTS: _____
02 - 07 & 17

FINISH: _____
0 = GOLD CLIP, TIN SHELL
2 = GOLD CLIP, GOLD SHELL

ORDER CODE:

M80-898XXXX

TOTAL No. OF CONTACTS: _____
02 - 07 & 17

FINISH _____
01 = GOLD CLIP, TIN SHELL
05 = GOLD CLIP, GOLD SHELL

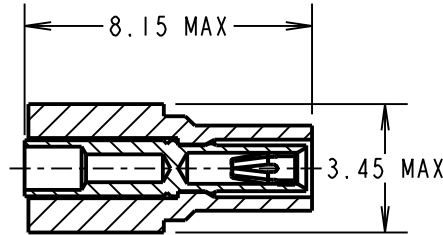
SPECIFICATIONS:

MATERIAL:
MOULDING = GLASS-FILLED POLYESTER UL94V-0, BLACK
CLIP = BERYLLIUM COPPER
SHELL = COPPER ALLOY

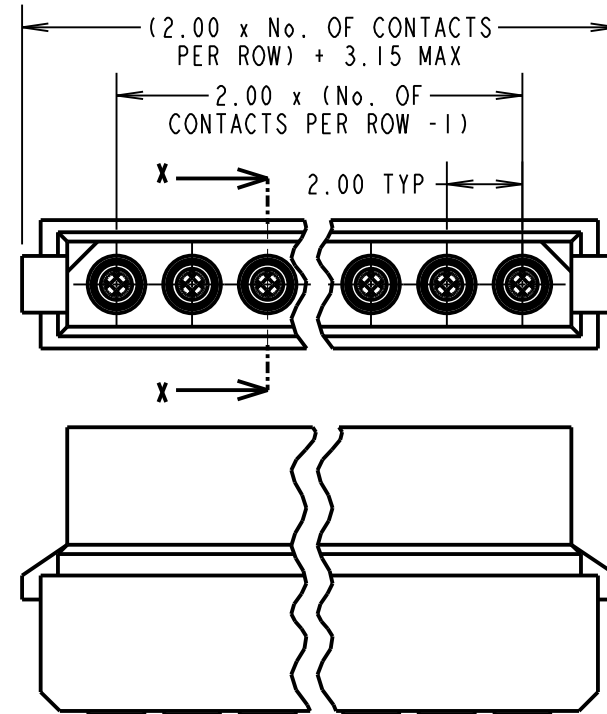
FINISH:
01 = 0.30µ GOLD CLIP, 4.0µ 100% TIN OVER NICKEL SHELL
05 = 0.30µ GOLD CLIP, 0.28µ GOLD SHELL

ELECTRICAL:
CURRENT RATING AT 25°C = 3.0A MAX
CURRENT RATING AT 85°C = 2.2A MAX
WORKING VOLTAGE = 800V AC/DC
VOLTAGE PROOF = 1200V AC/DC
CONTACT RESISTANCE:
INITIAL: 20mΩ MAX
AFTER CONDITIONING: 25mΩ MAX
INSULATION RESISTANCE:
INITIAL = 1000MΩ MIN
AFTER CONDITIONING = 100MΩ MIN

MECHANICAL:
DURABILITY = 500 OPERATIONS
ENVIRONMENTAL:
TEMPERATURE RANGE = -55°C TO +125°C
PACKING = BAG (CONTACTS AND MOULDINGS UN-ASSEMBLED)
FOR COMPLETE SPECIFICATION, SEE COMPONENT SPECIFICATION C005XX (LATEST ISSUE)



SECTION X-X



NOTES:

- RECOMMENDED WIRE TYPE = BS3G210 TYPE A, PTFE INSULATED, 24 - 28 AWG. MAX INSULATION DIAMETER = Ø1.10mm. STRIP WIRE BY 2.00mm.
- RECOMMENDED HAND CRIMP TOOL = M22520/2-01 WITH POSITIONER T5747. SEE TOOLING INSTRUCTION SHEET IS-01 FOR COMPLETE CRIMPING INFORMATION.
- CONTACT INSERTION & EXTRACTION TOOL = Z80-280. REFER TO INSTRUCTION SHEET IS-25 FOR ASSEMBLY INSTRUCTIONS.

MSP	12	29.10.14	12649
NAME	ISS.	DATE	C/NOTE
APPROVED:		M.PERREN	
CHECKED:		S.BENNETT	
DRAWN:		W. J. BOURNE	
CUSTOMER REF.:			
ASSEMBLY DRG:			

HARWIN

www.harwin.com
technical@harwin.com

THIS DRAWING AND ANY INFORMATION OR DESCRIPTIVE MATTER SET OUT HEREON ARE CONFIDENTIAL AND COPYRIGHT PROPERTY OF THE HARWIN GROUP AND MUST NOT BE DISCLOSED, LOANED, COPIED OR USED FOR MANUFACTURING, TENDERING OR FOR ANY OTHER PURPOSE WITHOUT THEIR WRITTEN PERMISSION.

TOLERANCES
X. = ±1mm
X.X = ±0.25mm
X.XX = ±0.10mm
X.XXX = ±0.01mm
ANGLES = ±5°
UNLESS STATED

MATERIAL:

SEE ABOVE

FINISH: SEE ABOVE

S/AREA: mm²

TITLE:

DATAMATE CRIMP
SIL SOCKET ASSEMBLY
SMALL BORE (24 - 28AWG)

DRAWING NUMBER:

M80-898XXXX

SHT
2 OF 2

Mouser Electronics

Authorized Distributor

Click to View Pricing, Inventory, Delivery & Lifecycle Information:

[Harwin:](#)

[M80-8980605](#) [M80-8980405](#) [M80-8980505](#) [M80-8980705](#) [M80-8980205](#) [B5740-102-F-C-2](#) [B5740-106-F-C-2](#)
[B5740-104-F-C-2](#) [B5740-107-F-C-2](#) [B5740-103-F-C-2](#) [B5740-105-F-C-2](#) [B5740-117-F-C-2](#) [M80-8980305](#) [M80-](#)
[8981705](#) [B5740-105-F-C-0](#) [M80-8980201](#) [M80-8980401](#) [M80-8980301](#) [M80-8980601](#) [M80-8980501](#)