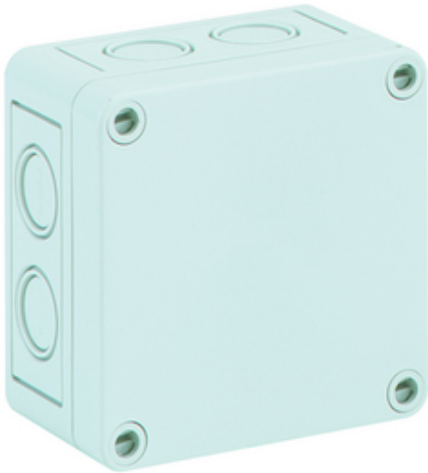


## Product

### TK PC 99-6-m



Empty enclosure - Industrial Quality -, box and cover:  
glass fibre reinforced polycarbonate, grey, similar to RAL  
7035

with metric knockouts

**Article:** TK PC 99-6-m

## Technical Data

### Dimensions:

interior height: 45 mm

### material:

Base: Polycarbonate, glass-fibre reinforced, grey simila  
Cover: Polycarbonate, glass-fibre reinforced, grey simila  
Sealing: Polyurethane  
Cover screw: Polyamide 6, fiber-glass reinforced

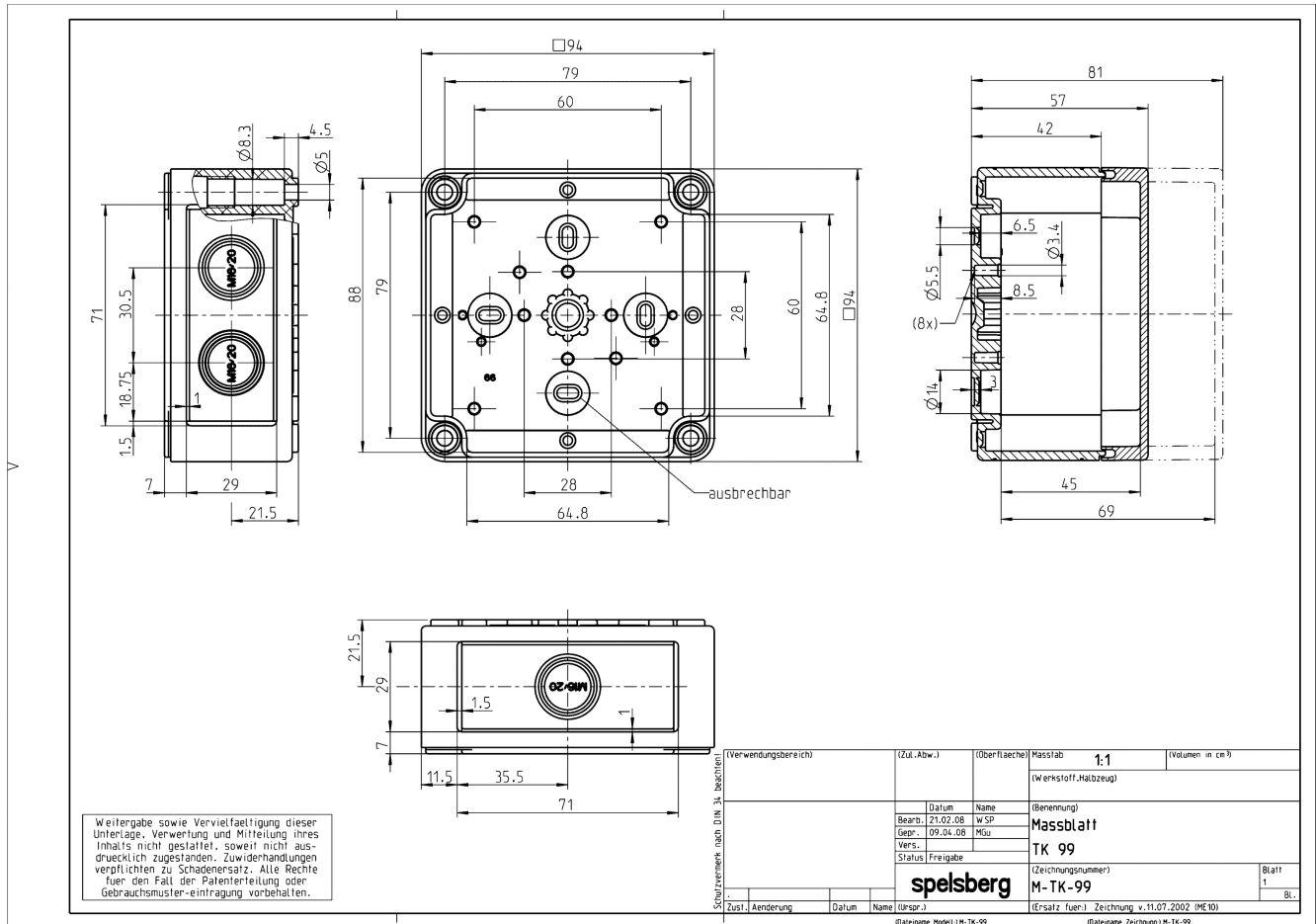
### Properties:

Ingress protection: IP66 - acc. EN 60529 / DIN VDE 0470-1  
Ambient temperature (max.): 80 °C  
Ambient temperature (24 h): 60 °C  
Max. rel. humidity at 40° C: 50%  
Max. rel. humidity at 25° C (short Therm): {100%}  
Rated insulation voltage AC: 690V  
Impact resistance: {IK08 nach DIN EN 5012 / VDE 0470 Teil 100 }  
Protection class: II - isolate protection acc. VDE 0106 Protective insulation as per VDE 0106  
Halogen-free: ✓  
Heavy metals-free: ✓  
PVC-free: ✓

Silicone-free:	√
UV resistance:	√
Weatherproof:	√
Combustion behaviour to UL:	5VA nach UL 50 / UL 746C
Combustion behaviour to UL:	{V-2 nach UL 94}
Combustion behaviour to VDE:	960°C acc. VDE 0471/ EN 60695
Fitted for outdoor application:	√
Knockouts:	√

---

## Drawing



## Manufacturer

Günther Spelsberg GmbH + Co. KG  
 Im Gewerbepark 1  
 58579 Schalksmühle  
 +49 (0)2355/892-0  
 +49 (0)2355/892-299  
 www.spelsberg.de