

5

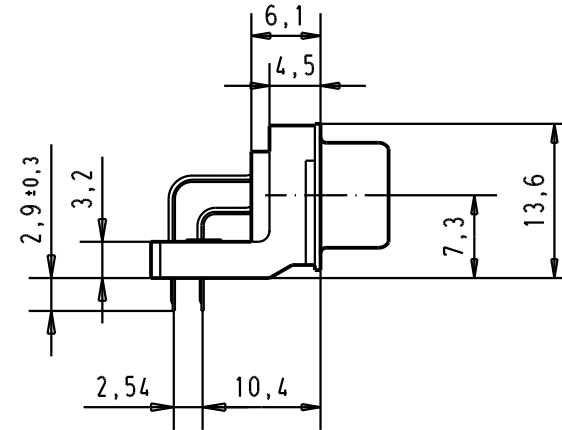
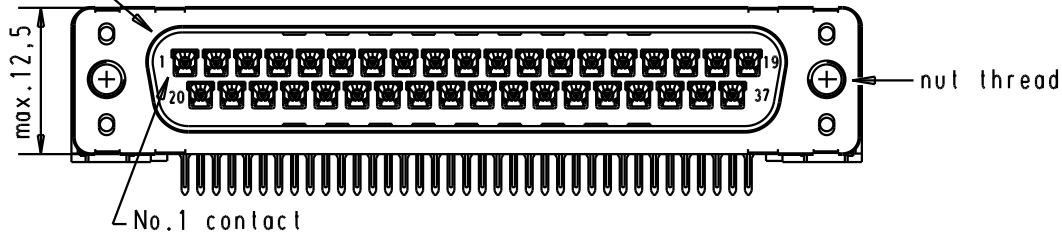
4

3

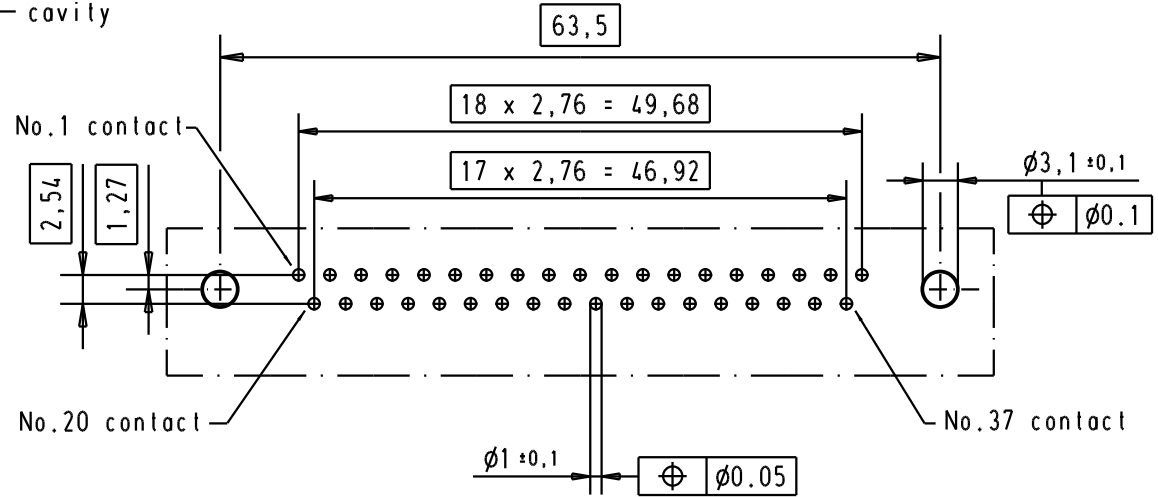
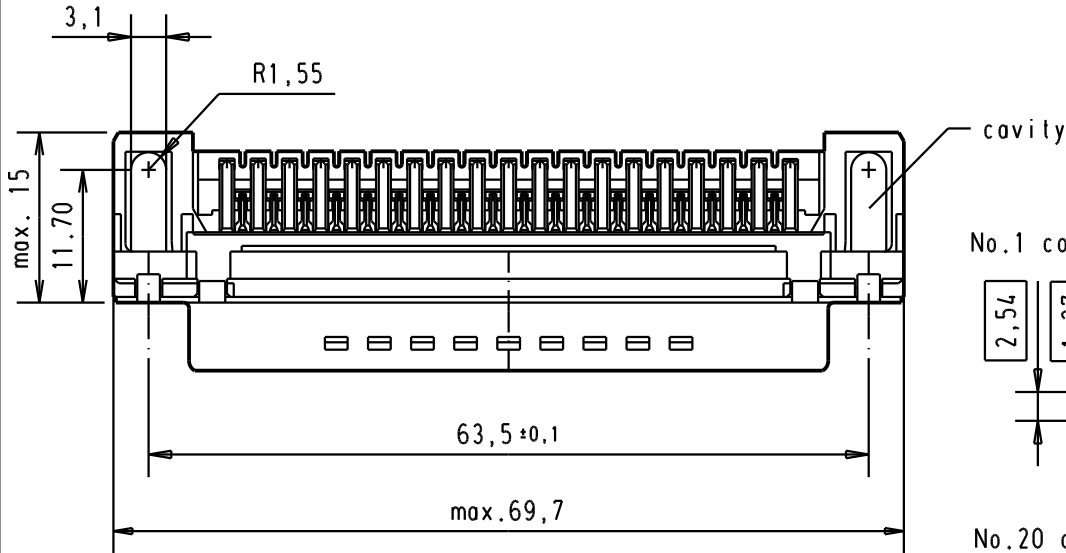
2

1

Mating face according to : MIL-C-24308 / DIN 41652 / CECC 75301-802



Printed board layout component side



A	09 65 422 3801	M3	1							<p>All Dim. in mm Orig. Size DIN A 4</p>	D-Sub, male, standard angle, 37 poles, with solder pin, nut and hole	Maßstab/ Scale 1.5:1
	09 65 422 6801	M3	2				Detail.	12/dec/00	ALSPACE			
	09 65 422 7801	M3	3	31892	22/04/04	JH	Insp.					
	09 65 422 3802	4-40 UNC	1	29773	18-APR-02	CV	Stand.					
	09 65 422 6802	4-40 UNC	2	29689	02/07/01	AA						
	09 65 422 7802	4-40 UNC	3	27960	12/dec/00	ALSPACE						
Part number		Nut thread	Performance level	Mod.	Dat.	Name	HARTING EURL F-95972 Paris				TB 0965422x80x	Blatt/ Page 2
							Sub.					

Mouser Electronics

Authorized Distributor

Click to View Pricing, Inventory, Delivery & Lifecycle Information:

[HARTING:](#)

[09654226801](#) [09654226802](#) [09654227801](#) [09654227802](#)