



**Part Number :** [39291168](#)

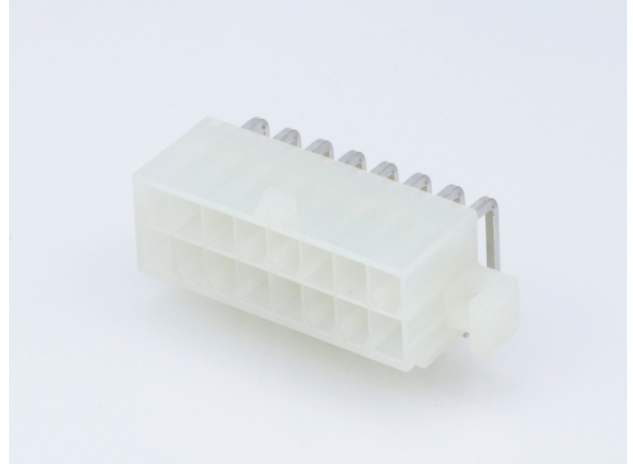
**Product Description :** Mini-Fit Jr. Header, Dual Row, Right-Angle, with PCB Mounting Flange, 16 Circuits, PA Polyamide Nylon 6/6 94V-2, Tin (Sn) Plating

**Series Number :** 5569

**Status :** Active

**Product Category :** PCB Headers and Receptacles

**Engineering Number :** 5569-16A1



---

## Documents & Resources

### Drawings

[Drawing 039291168\\_sd.pdf](#)

[Packaging Design Drawing 55690001-PK-000.pdf](#)

### 3D Models and Design Files

[3D Model PDF 039291168.pdf](#)

[3D Model 039291168\\_stp.zip](#)

### Specifications

[Application Specification AS-5557-001-001.pdf](#)

[Packaging Specification PK-5569-002-001.pdf](#)

[Product Specification PS-45750-001-001.pdf](#)

[Product Specification PS-5556-001-001.pdf](#)

---

## Product Environment Compliance

### Compliance

GADSL/IMDS	Not Relevant
China RoHS	
EU ELV	Not Relevant
Low-Halogen Status	Low-Halogen per IEC 61249-2-21
REACH SVHC	Not Contained per D(2023)3788-DC (14 Jun 2023)
EU RoHS	Compliant per EU 2015/863

### [Multiple Part Product Compliance Statements](#)

- Eu RoHS
- REACH SVHC
- Low-Halogen

#### Multiple Part Industry Compliance Documents

- IPC 1752A Class C
- IPC 1752A Class D
- Molex Product Compliance Declaration
- IEC-62474
- chemSHERPA (xml)

#### EU RoHS Certificate of Compliance

---

### Part Details

#### General

Status	Active
Category	PCB Headers and Receptacles
Series	5569
Description	Mini-Fit Jr. Header, Dual Row, Right-Angle, with PCB Mounting Flange, 16 Circuits, PA Polyamide Nylon 6/6 94V-2, Tin (Sn) Plating
Application	Power, Wire-to-Board
Comments	Current = 13A max. per circuit when header is mated to a receptacle loaded with 45750 Mini-Fit Plus HCS Crimp Terminal Crimped to 16 AWG wire. See Molex Product specification PS-5556-001 for additional current de-rating information.
Component Type	PCB Header
Product Family	Mini-Fit Family Power Connectors
Product Name	Mini-Fit Jr.
UPC	800753580619

#### Agency

CSA	LR19980
UL	E29179

#### Electrical

Current - Maximum per Contact	13.0A
-------------------------------	-------

Voltage - Maximum	600V
-------------------	------

## Physical

Breakaway	No
Circuits (Loaded)	16
Circuits (maximum)	16
Color - Resin	Natural
Durability (mating cycles max)	30
First Mate / Last Break	No
Flammability	94V-2
Glow-Wire Capable	No
Guide to Mating Part	No
Keying to Mating Part	None
Lock to Mating Part	Yes
Material - Metal	Brass
Material - Plating Mating	Matte Tin
Material - Plating Termination	Matte Tin
Material - Resin	Nylon
Net Weight	5.699/g
Number of Rows	2
Orientation	Right Angle
Packaging Type	Bag
PCB Locator	Yes
PCB Retention	Yes
PCB Thickness - Recommended	1.78mm
Pitch - Mating Interface	4.20mm
Pitch - Termination Interface	4.20mm
Plating min - Mating	2.540µm
Plating min - Termination	2.540µm
Polarized to Mating Part	Yes
Polarized to PCB	Yes
Shrouded	Fully
Stackable	No
Temperature Range - Operating	-40° to +105°C
Termination Interface Style	Through Hole

## Solder Process Data

Max-Duration	5
Lead-Free Process Capability	WAVE
Max-Cycle	1
Max-Temp	260

---

## Mates With / Use With

### Mates with Part(s)

Description	Part Number
Mini-Fit TPA2 and Mini-Fit Sigma Dual Row Receptacle Housings	<u>172708</u>
Mini-Fit Jr. Receptacle Housings	<u>5557</u>

---

This document was generated on Sep 04, 2023