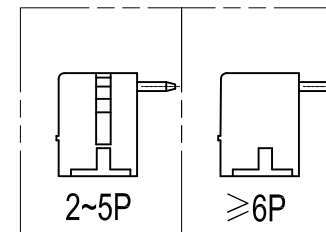
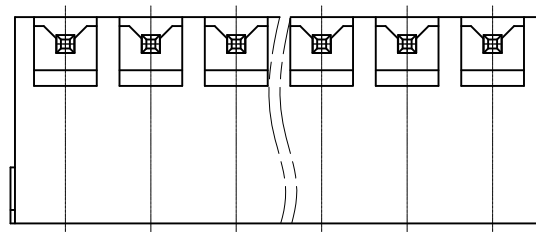
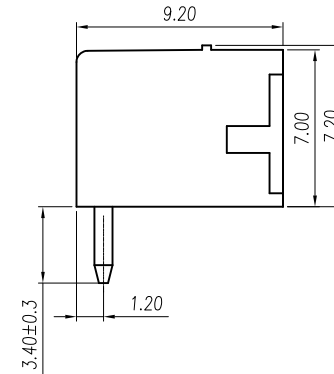
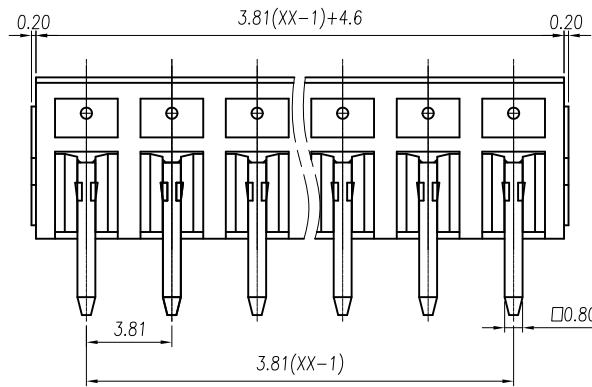
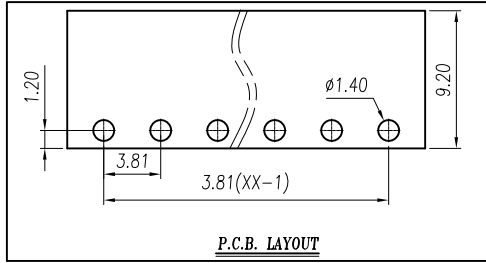


Pin Headers 90° 3.81 mm pitch



linear dimension(Tolerances Standard GB/T 14486-2008)								—	▯	⊥
variable range	to 6	over 6 to 10	over 10 to 30	over 30 to 60	over 60 to 100	over 100 to 160	over 160 to 10	over 10 to 100	over 100 to 100	
tolerance	±0.20	±0.30	±0.50	±0.70	±1.00	±1.30	±1.60	0.10	0.30	0.60

UL/CUL Technical Data		cULus		
Use Group		B	C	D
Rated Voltage [V]		300	-	300
Rated Current [A]		8	-	8
Wire Range		-		
Solid/Stranded [AWG]		-		
Withstanding Voltage		1600V/1Min		
IEC Technical Data		DVE		
Overvoltage Category		III	III	II
Contamination Class		3	2	2
Rated Voltage [V]		160	160	250
Rated Current [A]		7	7	7
Impulse withstand voltage [KV]		2.5	2.5	2.5
Conductor cross section		-		
Solid/ flexible [mm²]		-		
Material				
Insulation Material		PA66		
Imflammability		UL94V-0		
Contact Material		Copper alloy		
Contactive Coating		Sn Plated		
Other Data				
Pitch / Poles [mm] / [P]		3.81 / 02~24		
Stripping Length [mm]		-		
Screw / Torque(Max) [N.m]		-		
Operating temperature [°C]		-40~105		
Soldering temperature		250°C/5S		
Pin Dimensions [mm]		0.8*0.8		
PCB Hole Diameter [mm]		Ø1.4		