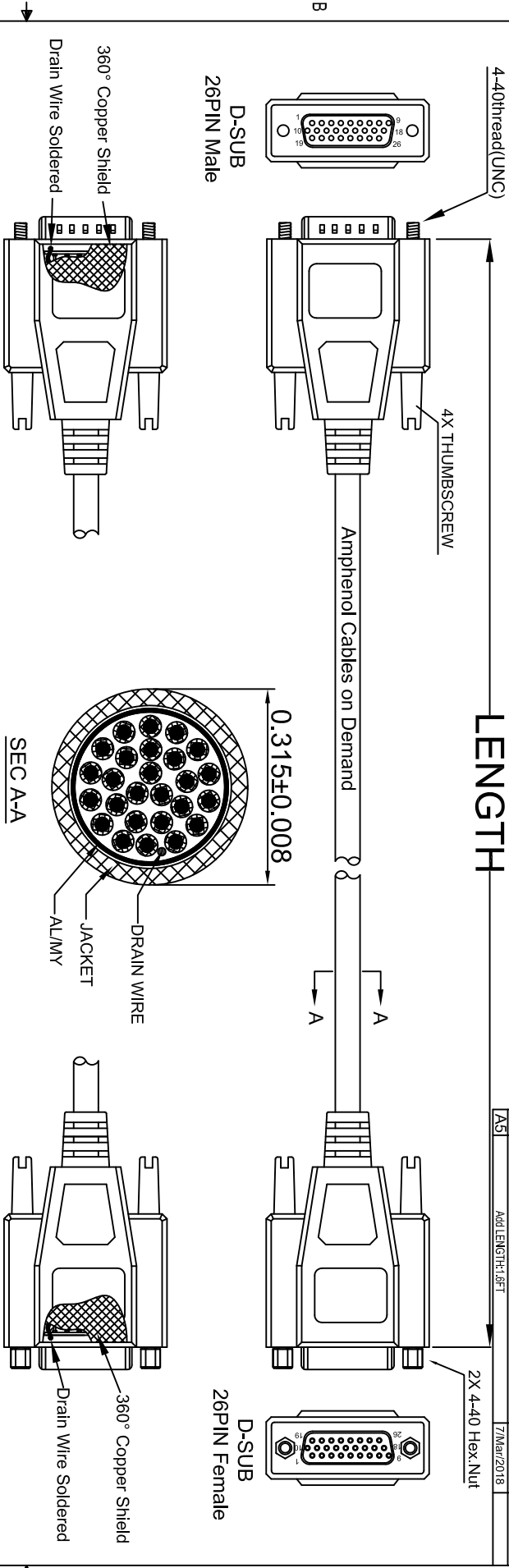


THE INFORMATION CONTAINED IN THIS DRAWING IS THE SOLE PROPERTY OF AMPHENOL CABLES ON DEMAND. ANY REPRODUCTION OR DISCLOSURE, TO THIRD PARTIES, IN PART OR WHOLE, WITHOUT THE EXPRESS WRITTEN PERMISSION OF AMPHENOL CABLES ON DEMAND IS PROHIBITED.

REV.	DESCRIPTION	DATE	APPROVED
A	NEW RELEASE	31/JUL/2006	
A1	Change Part Number	17/NOV/2006	
A2	Add Hex Nut	5/DEC/2007	
A3	Revised the number of wire conductors.	26/AUG/2009	
A4	Add wiring color	16/JAN/2012	
A5	Add LENGTH:1.6FT	7/MAR/2018	



LENGTH & P/N Table

LENGTH	P/N	Cable Color
1.6FT ±1 inch	CS-DSDHD26MF0-001.6	GREY
2.5FT ±1 inch	CS-DSDHD26MF0-002.5	GREY
5FT ±2 inch	CS-DSDHD26MF0-005	GREY
10FT ±3 inch	CS-DSDHD26MF0-010	GREY
15FT ±3 inch	CS-DSDHD26MF0-015	GREY
25FT ±4 inch	CS-DSDHD26MF0-025	GREY
50FT ±8 inch	CS-DSDHD26MF0-050	GREY

PIN OUT: 1 TO 1		Male	Female	Color	Male	Female	Color
PIN1	—	PIN1	—	Black	PIN16	—	Orange/White
PIN2	—	PIN2	—	Brown	PIN17	—	Green/White
PIN3	—	PIN3	—	Red	PIN18	—	Blue/White
PIN4	—	PIN4	—	Orange	PIN19	—	Purple/White
PIN5	—	PIN5	—	Yellow	PIN20	—	Red/Black
PIN6	—	PIN6	—	Green	PIN21	—	Yellow/Black
PIN7	—	PIN7	—	Blue	PIN22	—	Orange/Black
PIN8	—	PIN8	—	Purple	PIN23	—	Green/Black
PIN9	—	PIN9	—	Gray	PIN24	—	Gray/Black
PIN10	—	PIN10	—	White	PIN25	—	Pink/Black
PIN11	—	PIN11	—	Pink	PIN26	—	Pink/Red
PIN12	—	PIN12	—	Light Green	SHIELD	—	Drain Wire
PIN13	—	PIN13	—	Black/White	SHIELD	—	Drain Wire
PIN14	—	PIN14	—	Brown/White			
PIN15	—	PIN15	—	Red/White			



UNLESS OTHERWISE SPECIFIED DIMENSIONS ARE IN INCHES TOLERANCES ARE:

GEN/MS	±X	ANGES	±X°	DATE	APPROVALS	DATE
X	±.XX			7/Mar/2018	LF	7/Mar/2018
XX	±.XX				CHECKED	
XXX	±.XXX			7/Mar/2018	BA	7/Mar/2018

THIRD ANGLE PROJECTION

RESP ENG

DRWG ENG

SIZE DWG. NO. A

SCALE SHEET OF

AMPHENOL CABLES ON DEMAND
20 VALLEY ST. ENDCOTT, NY 13760

ASM CBL Deluxe High Density
26PIN D-Sub MF

CS-DSDHD26MF0-XXX

REV. A5

Mouser Electronics

Authorized Distributor

Click to View Pricing, Inventory, Delivery & Lifecycle Information:

Amphenol:

[CS-DSDHD26MF0-015](#) [CS-DSDHD26MF0-005](#) [CS-DSDHD26MF0-010](#) [CS-DSDHD26MF0-002.5](#) [CS-DSDHD26MF0-050](#) [CS-DSDHD26MF0-025](#)