

PLEASE CHECK WWW.MOLEX.COM FOR LATEST PART INFORMATION

Part Number: [0014567082](#)
Status: **Active**
Overview: [SL Modular Connectors](#)
Description: 2.54mm Pitch SL Insulation Displacement Connector Assembly, Female, Single Row, Version G, Positive Lock, Wire Size 22 AWG, 3.81µm Tin/Lead (SnPb), 8 Circuits

Documents:

3D Model	Drawing (PDF)
3D Model (PDF)	RoHS Certificate of Compliance (PDF)

Agency Certification

CSA	LR19980
UL	E29179

General

Product Family	Ribbon Cable / Wire Trap Connectors
Series	70400
Comments	Terminals Preloaded
Component Type	Housing
Glow-Wire Capable	No
Overview	SL Modular Connectors
Product Name	SL
UPC	800753763883

Physical

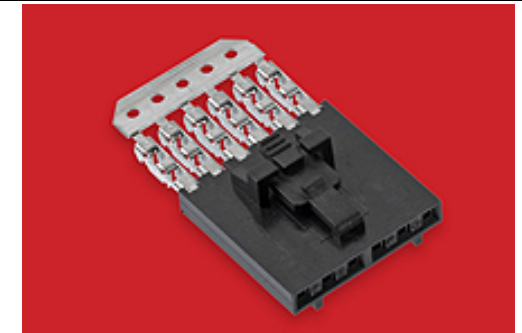
Circuits (Loaded)	8
Color - Resin	Black
Durability (mating cycles max)	25
Entry Angle	Vertical
Flammability	94V-0
Lock to Mating Part	Yes
Material - Metal	Phosphor Bronze
Material - Plating Mating	Tin
Material - Plating Termination	Tin
Material - Resin	Polyester Alloy
Number of Rows	1
PCB Retention	None
Packaging Type	Tube
Pitch - Mating Interface	2.54mm
Plating min - Mating	3.810µm
Plating min - Termination	1.905µm
Polarized to Mating Part	Yes
Stackable	Yes
Surface Mount Compatible (SMC)	N/A
Temperature Range - Operating	-40° to +105°C
Termination Interface: Style	IDT or Pierce
Wire Insulation Diameter	1.35mm max.
Wire Size AWG	22
Wire/Cable Type	Discrete Wire, Ribbon Cable

Electrical

Current - Maximum per Contact	3.0A
Voltage - Maximum	250V

Material Info

Engineering Number	70400-3146
--------------------	------------



Series image - Reference only

EU ELV

Not Reviewed

EU RoHS

Not Reviewed

REACH SVHC

Not Reviewed

Halogen-Free

Status

Not Reviewed

For more information, please visit [Contact US](#)

China ROHS

Not Reviewed

ELV

Not Reviewed

RoHS Phthalates

Not Reviewed

Search Parts in this Series

[70400](#) Series

Mates With

Single Row Housing [70018](#) , [70107](#) Version A, [70107](#) Version B, [70543](#) , [70545](#) , [70553](#) , [70555](#)

Use With

[7307](#) Tinned 28AWG, [7767](#) Topcoat 28AWG, [24241](#) Tinned 26AWG, [8996](#) Topcoat 26AWG, [24226](#) Tinned 24AWG, [8997](#) Topcoat 24AWG, [24369](#) High Flex 26AWG, [24389](#) High Flex 24AWG

Application Tooling | FAQ

Tooling specifications and manuals are found by selecting the products below. Crimp Height Specifications are then contained in the Application Tooling Specification document.

Global

Description

Product #

IDT - Semi-automatic	11200949
- Bench-Top Terminator	

IDT Discrete	<u>621000700</u>
Handtool Module	
Ribbon Cable Tool	<u>622016600</u>
Kit, Press Not	
Included	
Hawk Ribbon Cable	<u>623003000</u>
Terminator without	
Break-off	
Hawk Semi-	<u>623003100</u>
Automatic Discrete	
Wire Terminator	
Hawk Semi-	<u>623004900</u>
Automatic Discrete	
Wire Terminator	
for Rebuilt CE	
Approved*	
Hawk Flat Flex Cable	<u>623005200</u>
Terminator with	
Break-off	
Hawk Ribbon Cable	<u>623005300</u>
Terminator with	
Break-off	

This document was generated on 01/18/2021

PLEASE CHECK WWW.MOLEX.COM FOR LATEST PART INFORMATION

Mouser Electronics

Authorized Distributor

Click to View Pricing, Inventory, Delivery & Lifecycle Information:

[Molex:](#)

[14-56-7082](#)