

Han DD module, crimp male

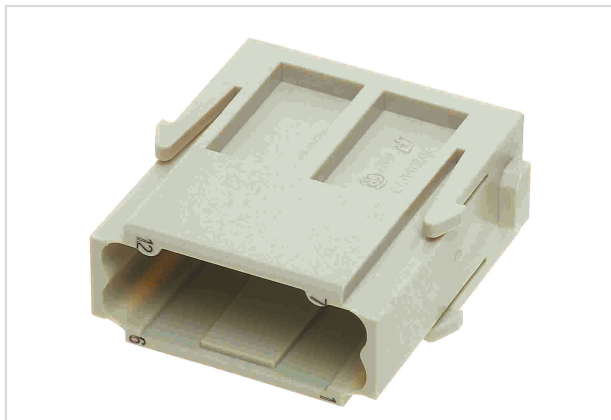


Image is for illustration purposes only. Please refer to product description.

| | |
|--------------------|---|
| Part number | 09 14 012 3001 |
| Specification | Han DD module, crimp male |
| HARTING eCatalogue | https://b2b.harting.com/09140123001 |

Identification

| | |
|----------------|----------------|
| Category | Modules |
| Series | Han-Modular® |
| Type of module | Han DD® module |

Version

| | |
|--------------------|---|
| Termination method | Crimp termination |
| Gender | Male |
| Number of contacts | 12 |
| Details | Please order crimp contacts separately. |

Technical characteristics

| | |
|---|------------------------------|
| Conductor cross-section | 0.14 ... 2.5 mm ² |
| Rated current | 10 A |
| Rated voltage | 250 V |
| Rated impulse voltage | 4 kV |
| Pollution degree | 3 |
| Rated voltage acc. to UL | 600 V |
| Insulation resistance | >10 ¹⁰ Ω |
| Limiting temperature | -40 ... +125 °C |
| Mating cycles | ≥500 |
| Mating cycles with other HMC components | ≥10,000 |



Material properties

| | |
|---|------------------------|
| Material (insert) | Polycarbonate (PC) |
| Colour (insert) | RAL 7032 (pebble grey) |
| Material flammability class acc. to UL 94 | V-0 |
| RoHS | compliant |
| ELV status | compliant |
| China RoHS | e |
| REACH Annex XVII substances | No |
| REACH ANNEX XIV substances | No |
| REACH SVHC substances | No |

Specifications and approvals

| | |
|----------------|---|
| Specifications | EN 60664-1 IEC 61984 |
| Approvals | DNV GL |
| UL / CSA | UL 1977 ECBT2.E235076 UL 2237 PVVA2.E318390 CSA-C22.2 No. 182.3 PVVA8.E318390 |

Commercial data

| | |
|--------------------------------|---|
| Packaging size | 2 |
| Net weight | 10 g |
| Country of origin | Germany |
| European customs tariff number | 85389099 |
| eCl@ss | 27440217 Module for industrial connectors (power/signals) |

Mouser Electronics

Authorized Distributor

Click to View Pricing, Inventory, Delivery & Lifecycle Information:

[HARTING:](#)

[09140123001](#)