



Features/Benefits

- **Subminiature size**—capable of switching 1 AMP
- **Vertical & right angle terminations**
- **PC & panel mount models**
- **Snap-in front panel mounting available**
- **Epoxy terminal seal-compatible with bottom wash cleaning**
- **RoHS compliant models available**



Models Available

Typical Applications

- **Telecommunications and networking equipment**
- **Computers and peripherals**
- **Instrumentation and controls**



Specifications

CONTACT RATING: B contact material: 0.4 VA max. @ 20 V AC or DC max. Q contact material: 1 AMP @ 120 V AC or 28 V DC. See page A-19 for additional ratings.

ELECTRICAL LIFE: TP11, TP21 MODELS: 60,000 make-and-break cycles at full load. TP12 MODELS: 30,000 cycles.

CONTACT RESISTANCE: Below 20 mΩ typ. initial @ 2-4 V DC, 100 mA, for both silver and gold plated contacts.

INSULATION RESISTANCE: 10⁹Ω min.

DIELECTRIC STRENGTH: 1000 Vrms min. @ sea level.

OPERATING TEMPERATURE: -30°C to 85°C.

SOLDERABILITY: Per MIL-STD-202F method 208D, or EIA RS-186E method 9 (1 hour steam aging).

NOTE: Any models supplied with Q, B, P, R or G contact material are RoHS compliant.

NOTE: Specifications and materials listed above are for switches with standard options. For information on specific and custom switches, consult Customer Service Center.

Materials

CASE: Glass filled nylon 4/6 or 6/6, flame retardant, heat stabilized or diallyl phthalate (DAP), (UL 94V-0).

PLUNGER: Thermoplastic polyester (UL 94V-0).

CAP & FRAME: Nylon, black standard.

BUSHING: Brass, nickel plated.

HOUSING: Stainless steel.

SWITCH SUPPORT: Brass, matte-tin plated.

END CONTACTS: B contact material: Copper alloy, with gold plate over nickel plate. Q contact material: Coin silver, silver plated. See page A-19 for additional contact materials.

CENTER CONTACT & ALL TERMINALS: B contact material: Copper alloy, with gold plate over nickel plate. Q contact material: Copper alloy, silver plated. See page A-19 for additional contact materials.

TERMINAL SEAL: Epoxy. Refer to soldering and cleaning in Technical Data Chapter

HARDWARE: Nut & Locking Ring: Brass nickel plated. Lockwasher: Steel, nickel plated.

Build-A-Switch

To order, simply select desired option from each category and place in the appropriate box. Available options are shown and described on pages A-16 thru A-20. For additional options not shown in catalog, consult Customer Service Center. All models have epoxy terminal seal and are compatible with all "bottom-wash" PCB cleaning methods.

| | | |
|--|---|--|
| <p>Switch Function</p> <p>TP11 SPST Off-Mom. TP12 SPDT On-Mom. TP21 DPST Off-Mom.</p> <p>Actuator or Bushing</p> <p>SH .155" high plunger, threaded, .220" high bushing, flat SH8 .155" high plunger, unthreaded, .220" high bushing, round SH9 .155" high plunger, unthreaded, .220" high bushing, flat J81 Snap-in with frame LT .215" high plunger, threaded, .310" high bushing, flat LT9 .215" high plunger, unthreaded, .310" high bushing, flat MS9 .130" high plunger, .020" high bushing, round</p> | <p>Terminations</p> <p>A Right angle, PC thru-hole C PC Thru-hole Z Solder lug AV Vertical right angle, PC thru-hole V3 Vertical mount, v-bracket W Wire wrap</p> <p>Contact Material</p> <p>B Gold P Gold, matte-tin Q Silver G Gold over silver R Gold over silver, matte-tin</p> | <p>Seal</p> <p>E Epoxy</p> <p>Cap Color</p> <p>2 Black NONE Models with no cap 1 White</p> <p>Frame Color</p> <p>2 Black NONE Models with no frame</p> |
|--|---|--|



TP Series Tiny Pushbutton Switches

Pushbutton
A

SWITCH FUNCTION

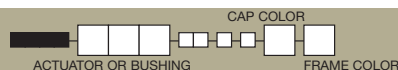


| NO. POLES | MODEL NO. | SWITCH FUNCTION | | CONNECTED TERMINALS | | SCHEMATIC |
|-------------|-------------|-----------------|--------|---------------------|---------|-----------|
| | | POS. 1 | POS. 2 | POS. 1 | POS. 2 | |
| SP | TP11 | OFF | MOM. | OPEN | 1-3 | SPST |
| | TP12 | ON | MOM. | 2-1 | 2-3 | SPDT |
| SPDT | | | | | | |
| DP | TP21 | OFF | MOM. | OPEN | 1-3,4-6 | DPST |
| DPST | | | | | | |

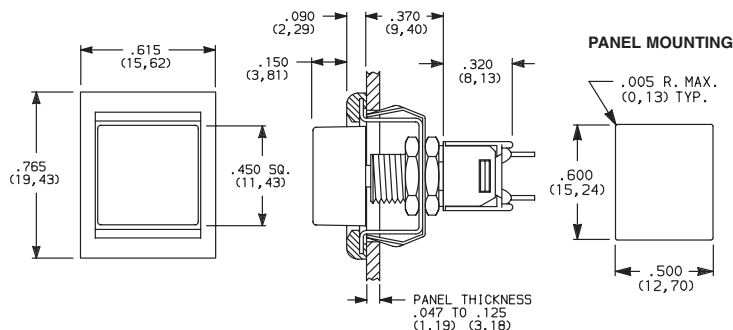
MOM. = Momentary

All models with all options when ordered with G, Q or R contact material.

ACTUATOR—SNAP-IN FRONT MOUNT



J81 SNAP-IN WITH FRAME



| OPTION CODE | CAP COLOR |
|-------------|-----------|
| 2 | BLACK |
| 1 | WHITE |

| OPTION CODE | FRAME COLOR |
|-------------|-----------------------------|
| 2 | BLACK |
| NONE | No Frame Color (J80 option) |

Cap and Frame Finish: matte. Other colors available, consult Customer Service Center.

NOTE: Available with Z, C, or W terminations.

NOTE: Caps & frames available separately, see page A-20.



Dimensions are shown: Inches (mm)
Specifications and dimensions subject to change



TP Series Tiny Pushbutton Switches



A

Pushbutton

SH .155" HIGH PLUNGER,
.220" HIGH BUSHING,
THREADED, FLAT

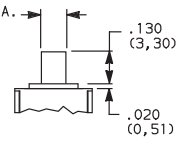
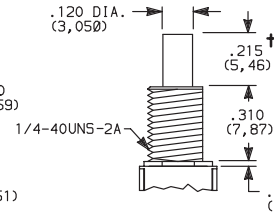
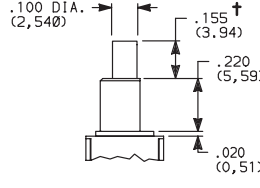
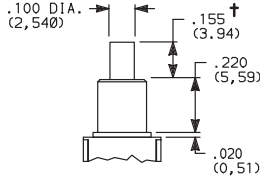
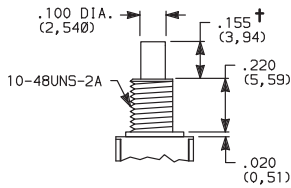
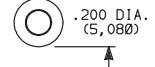
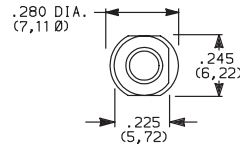
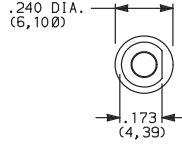
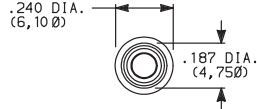
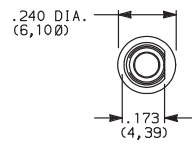
SH8 .155" HIGH PLUNGER,
.220" HIGH BUSHING,
UNTHREADED

SH9 .155" HIGH PLUNGER,
.220" HIGH BUSHING,
UNTHREADED, FLAT

LT .215" HIGH PLUNGER,
.310" HIGH BUSHING,
THREADED

MS9 .130" HIGH
PLUNGER

LT9 .215" HIGH PLUNGER,
.310" HIGH BUSHING,
UNTHREADED



Standard with Z, C, W terminations.

Standard with A, AV, V3 terminations.

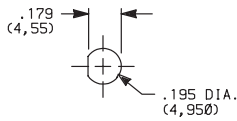
Not available with Z terminations.

† Subtract .016 (0,41) for models with A, AV or V3 terminations.

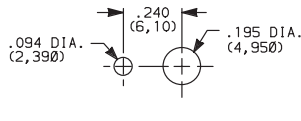
NOTE: Caps available for plunger options, see page A-20.

PANEL MOUNTING

10-48 BUSHING

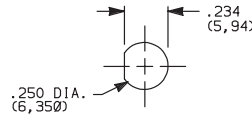


Without locking ring

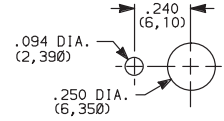


With standard locking ring

1/4 IN. BUSHING



Without locking ring



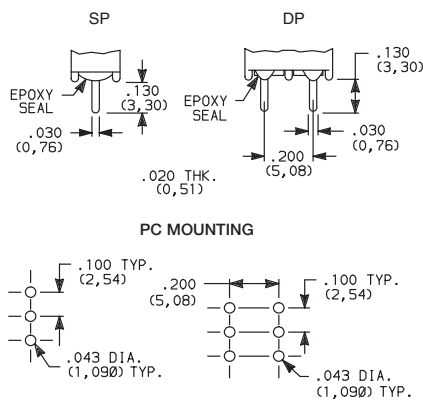
With standard locking ring

NOTE: One mounting nut, locking ring and lockwasher supplied standard with 10-48 threaded bushings (two nuts with 1/4-40 bushings).
Optional mounting nut and locking ring styles and finishes available separately, see section "Technical Data and Additional Hardware".

TERMINATIONS

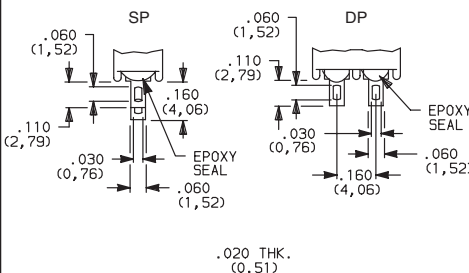


C PC THRU-HOLE



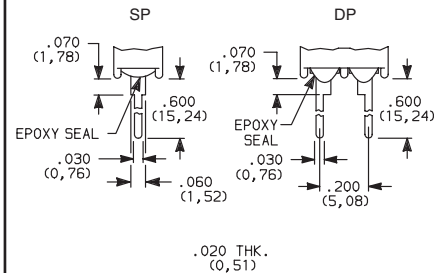
Omit center holes for TP11 models

Z SOLDER LUG



Not available with MS9 bushing or P or R contact material.

W WIRE WRAP



Dimensions are shown: Inches (mm)
Specifications and dimensions subject to change





TP Series Tiny Pushbutton Switches

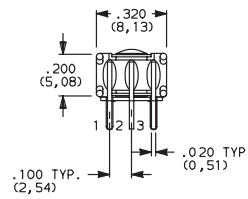
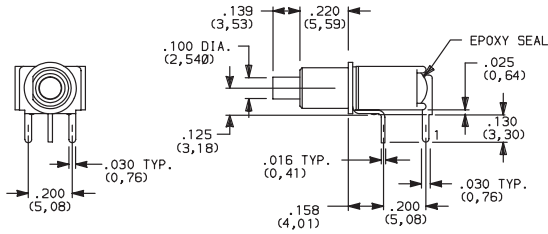
TERMINATIONS

Pushbutton
A

A RIGHT ANGLE, PC THRU-HOLE

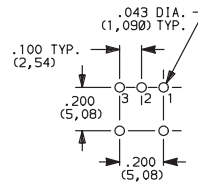


**TP12SH9ABE
SPDT**



**TP11 Models:
omit terminal 2.**

PC MOUNTING

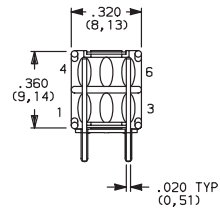
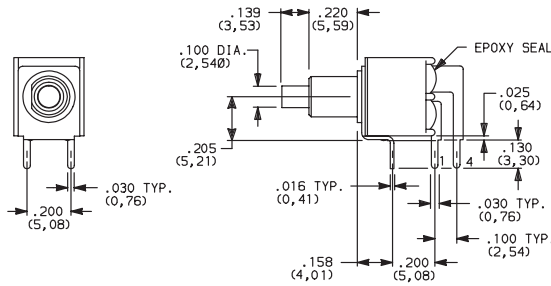


**TP11 Models:
omit hole 2.**

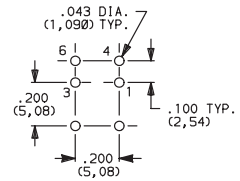
A RIGHT ANGLE, PC THRU-HOLE



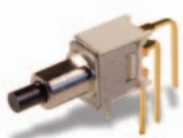
**TP21SH9ABE
DPST**



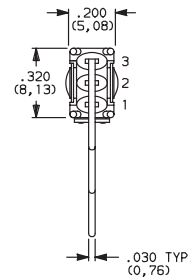
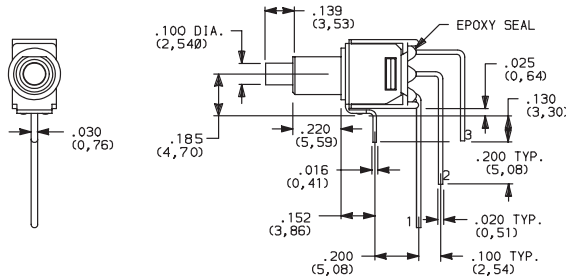
PC MOUNTING



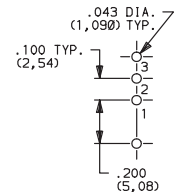
AV VERTICAL RIGHT ANGLE, PC THRU-HOLE



**TP12SH9AVBE
SPDT**



PC MOUNTING



**TP11 Models:
omit hole 2.**

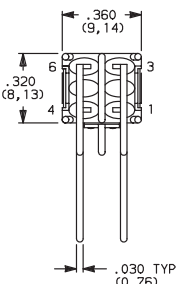
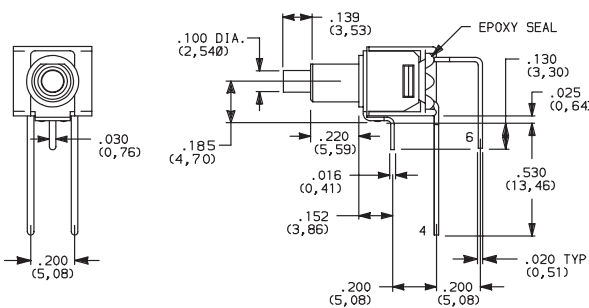
**TP11 Models:
omit terminal 2.**

NOTE: Terminal bend radii and lead-in manufacturing option.

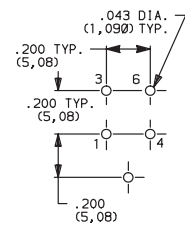
AV VERTICAL RIGHT ANGLE, PC THRU-HOLE



**TP21SH9AVBE
DPST**



PC MOUNTING



NOTE: Terminal bend radii and lead-in manufacturing option.



Third Angle
Projection



Dimensions are shown: Inches (mm)
Specifications and dimensions subject to change

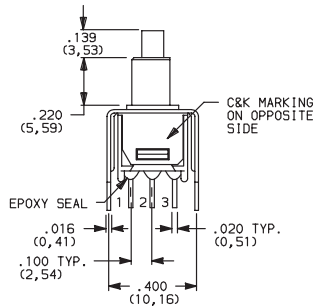


A

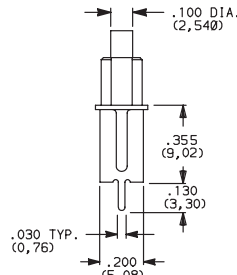
Pushbutton

TERMINATIONS

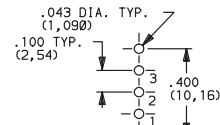
V3 VERTICAL MOUNT, V-BRACKET



TP11 Models:
omit terminal 2.



PC MOUNTING

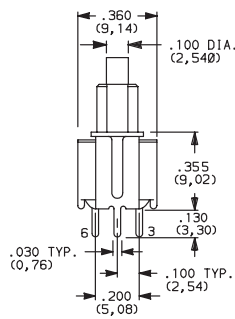
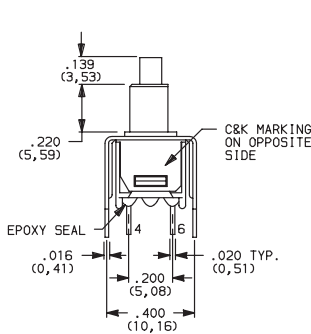


TP11 Models:
omit hole 2.

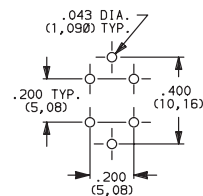


TP12SH9V3BE
SPDT

V3 VERTICAL MOUNT, V-BRACKET



PC MOUNTING



TP21SH9V3BE
DPST

CONTACT MATERIAL

| OPTION CODE | CONTACT MATERIAL | TERMINAL PLATING | RATINGS | |
|-------------|---------------------------------|------------------------|--------------------------------|--|
| B | GOLD ¹ | GOLD ¹ | LOW LEVEL/DRY CIRCUIT | 0.4 VA MAX. @ 20 V AC OR DC MAX. |
| P | | MATTE-TIN ⁶ | | |
| Q | SILVER ^{4,5} | SILVER ⁵ | POWER | 1 AMP @ 120 V AC OR 28 V DC. |
| G | GOLD OVER SILVER ^{2,3} | GOLD ³ | LOW LEVEL/DRY CIRCUIT OR POWER | 0.4 VA MAX @ 20 V AC OR DC MAX. OR 1 AMP @ 120 V AC OR 28 V DC. |
| R | | MATTE-TIN ⁶ | | |

* Note: See Technical Data section of this catalog for RoHS compliant and compatible definitions and specifications.

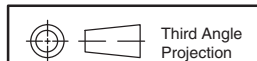
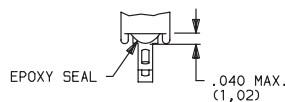
- ¹ CONTACTS & TERMINALS: Copper alloy, with gold plate over nickel plate.
- ² END CONTACTS: Coin silver, with gold plate over nickel plate.
- ³ CENTER CONTACTS & ALL TERMINALS: Copper alloy, with gold plate over nickel plate.
- ⁴ END CONTACTS: Coin silver, silver plated.
- ⁵ CENTER CONTACT & ALL TERMINALS: Copper alloy, silver plated.
- ⁶ TERMINALS: Copper alloy, with matte-tin over nickel plate.

NOTE: Any models supplied with P, R, Q, B or G contact material are RoHS compliant.

All models with all options when ordered with R, G, or Q contact material.
B contact material standard with A, AV, V3 & W terminations.
Q contact material standard with C & Z terminations.
P, R contact materials not available with Z terminations.

SEAL

E EPOXY SEAL



Dimensions are shown: Inches (mm)
Specifications and dimensions subject to change



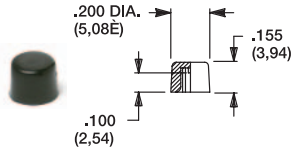


TP Series Tiny Pushbutton Switches

Pushbutton
A

AVAILABLE HARDWARE

Cap, .100" DIA. Plungers

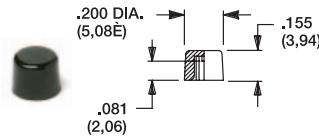


PART NO.

- 508101000** WHITE
- 508102000** BLACK

Material: Nylon
Finish: Gloss

Cap, .100" DIA. Plungers (Recommended for S9 plunger)

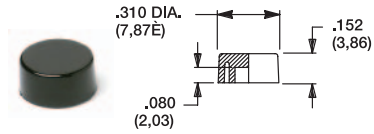


PART NO.

- 538701000** WHITE
- 538702000** BLACK

Material: Nylon
Finish: Gloss

Cap, .100" DIA. Plungers

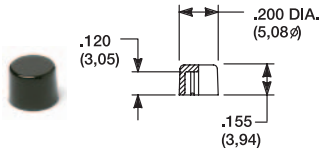


PART NO.

- 465801000** WHITE
- 465802000** BLACK

Material: Nylon
Finish: Gloss

Cap, .120" DIA. Plungers

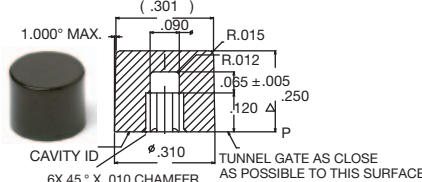


PART NO.

- 708901000** WHITE
- 708902000** BLACK

Material: Nylon
Finish: Gloss

Cap, .120" DIA. Plungers (.301)

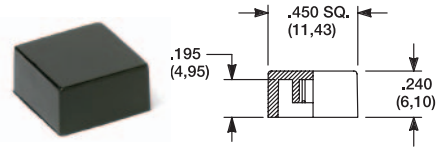


PART NO.

- 891D01000** WHITE
- 891D02000** BLACK

Material: Nylon
Finish: Gloss

Cap, J81 option only



PART NO.

- 484601000** WHITE
- 484602000** BLACK

Material: Nylon
Finish: Gloss

PART NO.

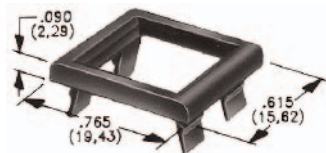
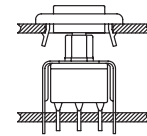
- 798201000** WHITE
- 798202263** BLACK

Material: Nylon
Finish: Matte

NOTE: Additional nuts, locking rings and lockwashers available separately, see section "Technical Data and Additional Hardware". Other cap colors available, consult Customer Service Center.

Frames snap into panel opening and are independent from switch mounting. Accurate positioning of the PC mounted switch relative to the panel opening is necessary to provide proper clearance between actuator and frame. Available in two basic styles and four panel thicknesses .047-.125 in. Material: Nylon. Finish: Matte.

TYPICAL APPLICATION

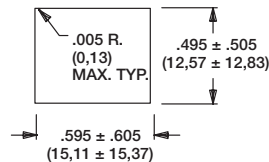


.047" (1,19) PANEL THK. .062" (1,57) PANEL THK. .090" (2,29) PANEL THK. .125" (3,18) PANEL THK.

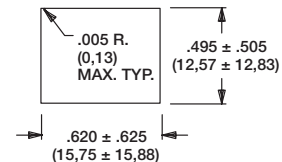
- | | | | |
|------------------|------------------|------------------|------------------------|
| PART NO. | PART NO. | PART NO. | PART NO. |
| 432502263 | 432602263 | 432702263 | 432802263 BLACK |

PANEL MOUNTING

For part numbers
432502263, 432602263

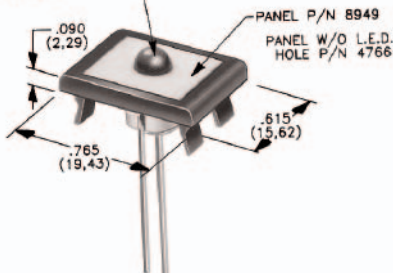


For part numbers
432702263, 432802263



Panel Inserts

L.E.D. (.200 DIA. (5,08E)) SNAPS SECURELY INTO INSERT (P/N 8949). HEIGHT DEPENDS ON L.E.D. USED.



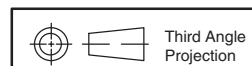
Above frames (part nos. 432XXXXXX) are also available with insert which accepts LED for indicator light assembly. Order insert separately from frame. Blank insert panel (without hole for LED) also available. **LED not included.**

PANEL INSERT WITH HOLE FOR LED

- PART NO.**
894902000

BLANK PANEL INSERT WITHOUT HOLE FOR LED

- PART NO.**
476602000 BLACK



Dimensions are shown: Inches (mm)
Specifications and dimensions subject to change

