

Flora RGB Smart NeoPixel version 2 - Pack of 4

PRODUCT ID: 1260

IN STOCK

1	ADD TO CART
---	--------------------

1-9

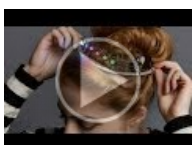
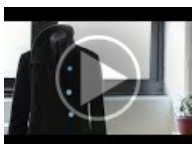
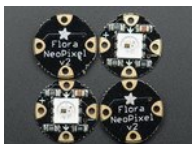
10-99

100+

ADD TO WISHLIST

[DESCRIPTION](#)

[TECHNICAL DETAILS](#)



DESCRIPTION

What's a wearable project without LEDs? Our favorite part of the Flora platform is these tiny smart pixels. Designed specifically for wearables, these updated Flora NeoPixels have ultra-cool technology: these ultra-bright LEDs have a constant-current driver cooked right into the LED package! The pixels are chainable - so you only need 1 pin/wire to control as many LEDs as you like. They're easy to sew, and the chainable design means no crossed threads.

This is the second version of the Flora NeoPixels, which runs at at 'high speed' 800KHz communication. Unfortunately they are not back-compatible with the chip-on-back 'low speed' (400KHz) Flora NeoPixels. If you have a project that already uses low speed pixels, and you want to attach more pixels to the chain, you will need to purchase version 1's as these are not cross-compatible.

These pixels have full 24-bit color ability with PWM taken care of by the controller chip. Since the LED is so bright, you need less current/power to get the effects you want. The driver is constant current so its OK if your battery power changes or fluctuates a little.

Each pixel draws as much as 60mA (all three RGB LEDs on for full brightness white). In theory, the Flora can drive up to 500 pixels at 30 FPS (it will run out of RAM after that). However, after about 10 pixels (or if the distance between pixels is more than an inch or two) the resistance of the thread can affect the power supply. For large quantities of pixels over 10, you may want to consider using stranded core wire or copper braid to provide a "power bus" for the pixels - the current draw will add up fast!

Each order comes with 4 individually controllable pixels. [If you want a bunch of LEDs, consider getting a sheet of 20 to save some money!](#)

Flora RGB Smart Neo Pixel version 2 - Pack of 4 ([17:23](#))

TECHNICAL DETAILS

- 0.5" (12.5mm) diameter circle PCB, 0.1" (2.5mm) total thickness
- 800 KHz speed protocol
- Chainable design
- 5-9VDC power (can run at 3.5V but color will be dimmed), constant current 18.5mA per LED (~55mA max total per pixel)
- [EagleCAD PCB files and Fritzing Library available in the NeoPixel tutorial](#)

Head to the Adafruit Learning System for the following FLORA tutorials:

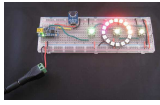
- [Getting started with FLORA](#)
- [Flora RGB Smart Pixels](#)
- [LED Ampli-Tie](#)



LEARN



[Adafruit NeoPixel Überguide](#)
Everything you always wanted to know about Adafruit NeoPixels but were afraid to ask



[Trinket Sound-Reactive LED Color Organ](#)
Add sound reactive color to your tunes.



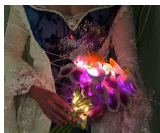
[3d Printed Neopixel Tactile Switch Buttons](#)
Wearable-friendly illuminated controls for your project



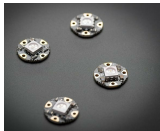
[Creating Guides for the Adafruit Learning System](#)
A guide about creating guides



[Space Face LED Galaxy Makeup](#)
Wear a constellation with NeoPixels & GEMMA



[Light of Your Life Wedding Bouquet](#)
Beautiful flowers that glow more brightly when your love is near



[Sewable NeoPixels](#)
Addressable, chainable, delectable!



[3D Printed Wireless MIDI Controller Guitar](#)
Make your own awesome wireless MIDI controller guitar for rocking out



[Sipping Power With NeoPixels](#)
LED smarter, not harder



[FLORA Pixel Brooch](#)
Maximum blinks, no soldering!



[LED Ampli-Tie](#)
Wearable VU meter necktie with Flora

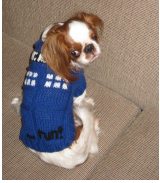


[3D Printed LED Buckle](#)
Combine Gemma & 3D printing for your very own glowy wearables project



Sparkle Skirt

Stitch a circuit that lights up when you move



Flora-Powered TARDIS Costume (for Dogs!)

Build a model TARDIS or dress your pet as one with this wearable-scale project



Light-Up Angler Fish Embroidery

Deep sea stitching with FLORA



NeoPixel Coat Buttons

Make glowy buttons for apparel



Chameleon Scarf

Changes color to match!



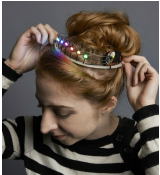
Washing Wearable Electronics

Rub-a-dub-dub, FLORA in the tub



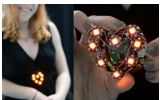
Pac Man Pixel Suspenders

Blinken-braces!



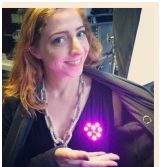
NeoPixel Tiara

Wear a crown of LEDs for your birthday or prom!



Heart Rate Badge

Wear your heart on your sleeve!



Light-Activated Pixel Heart

Wear your heart on your... lapel!



PianoGlove

Convert color to music with a wave of your finger.



Close Encounters Hat

Surprise your friends with a mother ship on your head, Spielberg style.



Experimenting with NeverWet + Electronics

Circuits under water and more!



Let's Put LEDs in Things!
Intro to electronics for cosplayers, no prior experience required



Glowing Skullcandy Headphones Mod
Add sweet LEDs to your earphones!



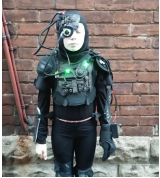
NeoPixels on Raspberry Pi
How to control NeoPixel LEDs with Python on a Raspberry Pi!



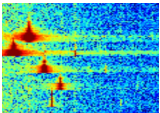
NeoPixel Dust Bag
Make a GEMMA and NeoPixel Pixie Dust Bag



Introducing Gemma
Introducing Adafruit's mini wearable microcontroller



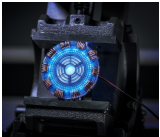
Build your own Borg (BYOB)
Creating your own cyborg terror



FFT: Fun with Fourier Transforms
Analyzing audio signals with Teensy 3.0



Textile Potentiometer Hoodie
All-sewn slide-sensor circuit

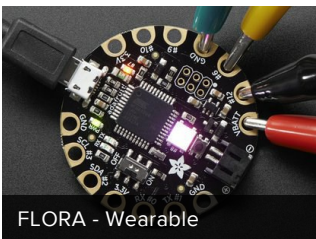


Superhero Power Plant
Inspired by Iron Man's Arc Reactor!



LED Masquerade Masks
Light up the party!

MAY WE ALSO SUGGEST...



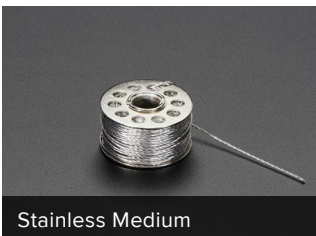
FLORA - Wearable



Needle set - 3/9 sizes - 20



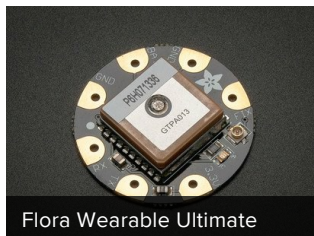
FLORA



Stainless Medium



FLORA GPS Starter Pack



Flora Wearable Ultimate



Adafruit GEMMA v2 -



NeoPixel Ring - 12 x 5050



Flora RGB Smart NeoPixel



Adafruit NeoPixel Digital



Adafruit LED Sequins -



FLORA Sensor Pack

DISTRIBUTORS [EXPAND TO SEE DISTRIBUTORS](#)

[CONTACT](#)

[SUPPORT](#)

[DISTRIBUTORS](#)

[EDUCATORS](#)

[JOBS](#)

[FAQ](#)

[SHIPPING & RETURNS](#)

[TERMS OF SERVICE](#)

[PRIVACY & LEGAL](#)

[ABOUT US](#)

"Another belief of mine; that everyone else my age is an adult, whereas I am merely in disguise" -
Margaret Atwood

ENGINEERED IN NYC Adafruit®



4.9 ★★★★★
Google
Customer Reviews