

Cable entry with membrane for unassembled cables, Mounting type: Snap-on and srew, Length: 147 mm, Width: 58 mm, IP66, Colour: Black

RAL: 9005

Business data

Packaging unit	10
Quantity unit	PC
Weight per piece (not including packaging)	115 g
Weight per piece (including packaging)	122.2 g
Unit of weight	G
Customs number	39259020
Country of origin	DE
Product description	Cable Entry

Technical data

Dimensions

Length	149.6 mm
Length of wall cutout	112 mm
Width	58 mm
Width of wall cutout	36 mm
Installation height	14.5 mm

Materials

Material	Polyamide 6.6
Glass-fibre reinforced	✓
Flammability class UL 94	V-0
Working temperature, min.	-40 °C
Working temperature, max.	90 °C
Sealing material	TPE
Halogen-free	✓
Silicone-free	✓

Further technical data

Mounting type	Snap-on and screw-on
Degree of protection	IP66
Sheet thickness min.	1.5 mm
Sheet thickness max.	2 mm
NEMA Type	4x
Number of screw holes	4
Fixing screws	M4 (ISO 4762 / DIN 912)
Torque of the fixing screws	3 Nm
Number of wires	21
Number of cables for cable diameters 3.2 - 6.3 mm	1
Number of cables for cable diameters 4.0 - 7.5 mm	14
Number of cables for cable diameters 5.5 - 10.5 mm	4
Number of cables for cable diameters 8.0 - 12.5 mm	2

Print

Colour	Black
--------	-------

Data sheet

28646.4

KES-GB 21/24 BK



Technical data

Environmental Product Compliance

REACH Conform	yes
REACH Reference date	2021-07-08
REACH Candidate Substance Note	No
RoHS Conform	yes

28646.4

KES-GB 21/24 BK

Approvals

cUL Recognized

cUL approval	C22.2 No. 14-18
cUL Recognized	yes

UL Recognized

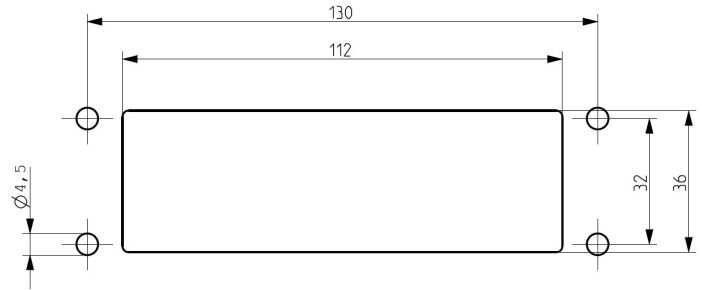
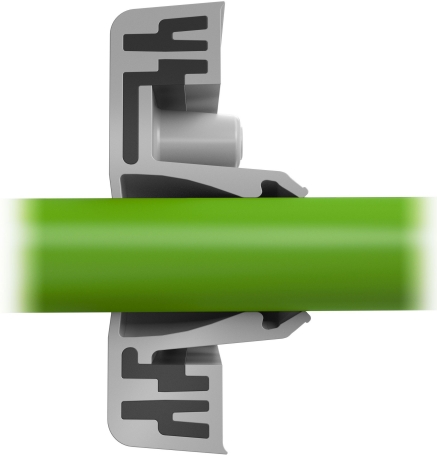
UL approval	UL 508A
UL Recognized	yes

Data sheet

28646.4

KES-GB 21/24 BK

Media



CRA[®] US

28646.4

KES-GB 21/24 BK

Accessories

EMC brackets



Shield-connection rail enabling mounting of shield connection clips directly on cable entry system KDS and KES, Mounting type: Screw, Length: 35,3 mm, Width: 140 mm, Height: 16 mm, Profile: 10x3 mm

detail.dataSheet.generalOrderData

Product number:	detail.dataSheet.productName	GTIN (EAN)	detail.dataSheet.
28626.0	KDS-EMV-SAB 10/24	4044211219659	500 ST

28646.4

KES-GB 21/24 BK

Accessories

Sheet-metal puncher



Sheet metal puncher for rectangular openings, Dimensions opening: 112 x 36 mm, Maximum wall thickness: 2.0 mm for stainless steel sheet, Material: steel

detail.dataSheet.generalOrderData

Product number:	detail.dataSheet.productName	GTIN (EAN)	detail.dataSheet.
28752.0	BL-VA KES	4044211221935	500 ST



Sheet metal puncher for rectangular openings, Dimensions opening: 112 x 36 mm, Maximum wall thickness: 2.0 mm for S 235 sheet, Material: steel

detail.dataSheet.generalOrderData

Product number:	detail.dataSheet.productName	GTIN (EAN)	detail.dataSheet.
28744.0	BL KES	4044211221942	500 ST