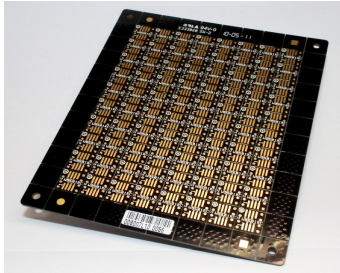
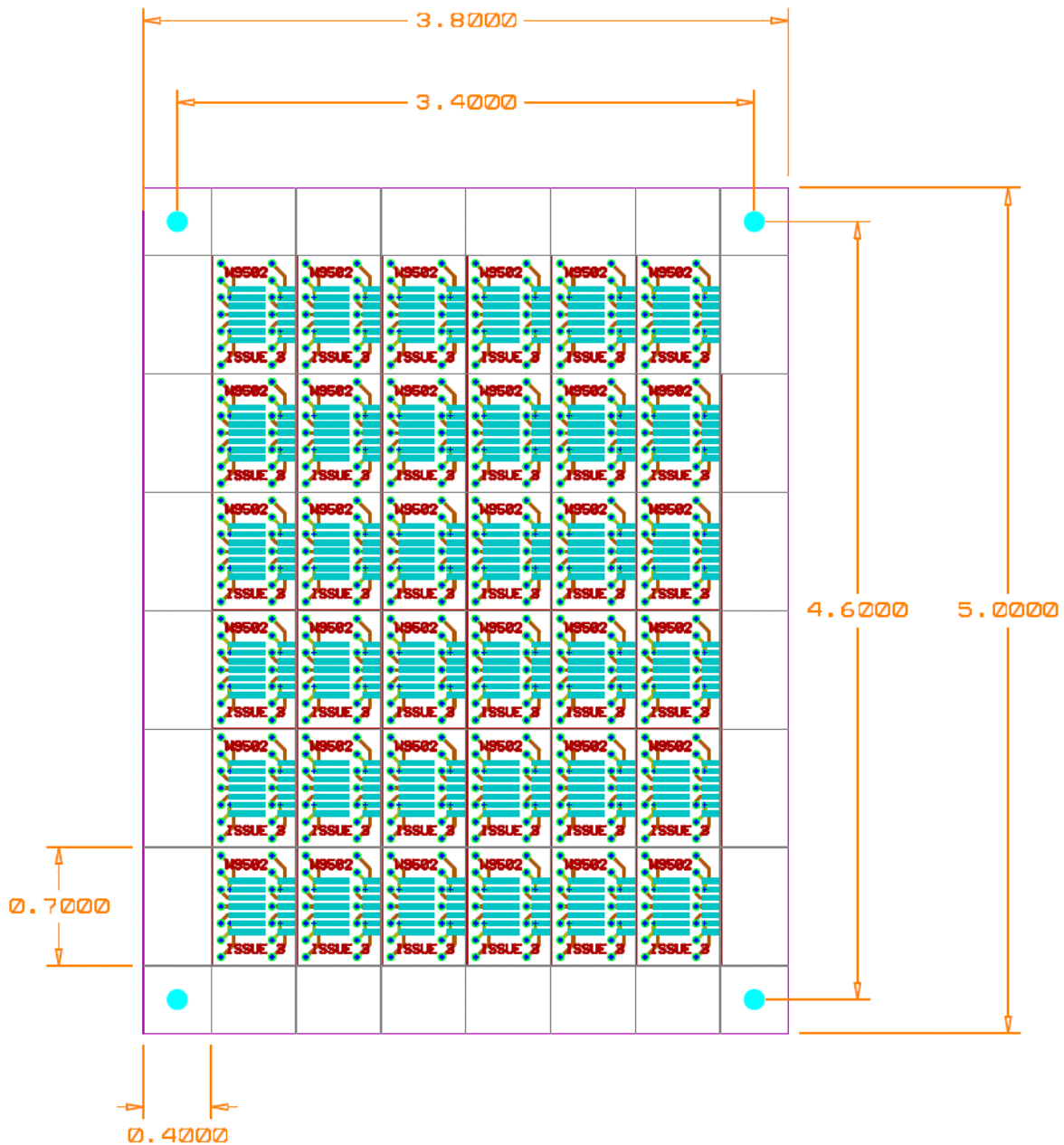


WINSLOW ADAPTICs

W9502RCpanel 14 pin SOIC to DIL Adapter



The W9502RC adapter is now available in panel format, where the circuit is step and repeated to enable processing in an automatic production environment. The panel contains 36 W9502RC circuits and a panel measuring 5" x 3.8".



WINSLOW ADAPTICs

Ordering Information

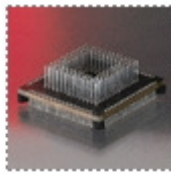
Suffix	PCB Plating	Contact Plating
No Suffix	Sn/Pb over Ni Or ENIG over Ni	Sn/Pb over Ni
RC (RoHS compliant)	ENIG over Ni (Standard)	Matte Sn over Ni (Standard) N.B. Au over Ni also available – Contact sales office for details

Material Specification

Printed Circuit Board	IPC4101A/21 CLASS B (FR4) Other substrate available on request
PCB Plating	Preferred - ENIG / Ni Optional -Sn / Pb (HASL) Other plating available on request
PCB Thickness	Preferred - 1.6mm Other thickness' available on request
Copper Weight	Preferred - 1oz Other weights available on request
Resist Color	Preferred – Black Other color available on request
Base Pin	Half hard brass
Pin Plating	μ Au over flash Ni 0.6 μ Matte Sn over 2.5 μ Ni 0.6 μ Sn/Pb over 2.5 Ni

For individual circuit dimensions please follow the following link

<http://www.winslowadaptics.com/product/14569>



Solutions to Component Leadtime and Obsolescence

Also available from Winslow Adaptics are cost effective, time saving solutions to test, obsolescence, supply problems and upgrades. OEMs can upgrade equipment with custom Adaptics utilising additional logic, often saving considerable cost and time on re-design. If lead-time becomes an issue contact us for a suitable package converter. We specialise in conversion of all package lead-frames. For further information please contact your nearest sales office

sales@winslowadaptics.com

www.winslowadaptics.com