

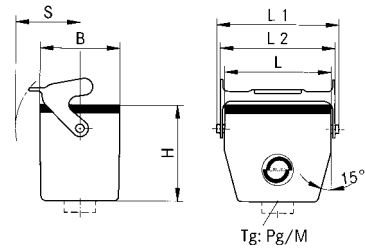
3.2 EPIC® D A - V I N C I H - B

Kupplungsgehäuse / Cable coupler hood / Capot prolongateur



PG

M



EPIC® H-B Gehäuse: Kupplungsgehäuse (Kabeleingang gerade, Längsbügel)

EPIC® H-B housings: cable coupler hood (top entry, single locking lever)

Boîtiers EPIC® H-B: capot prolongateur (sortie verticale, simple levier)

H-B 6

Artikel part article	Art.Nr. part No. N° art.	PG	M	ZW	L	L1	L2	L3	L4	B	B1	B2	B3	B4	B5	H	H1	H2	S	d
H-B 6 TBF 13,5	10014000	13,5		●	60	74,8	70			43						54,8			44	
H-B 6 TBF 16	10024000	16		●																
H-B 6 TBF M20	19014000		20		60	74,8	70			43						54,8			44	
H-B 6 TBF M25	19024000		25																	

Einsätze / Inserts / Inserts: 1.4: H-BE 6 / 1.5: H-EE 10 / 1.9: H-DD 24 / 1.10: MC 6

Deckel / Cover / Couvercle: 6.1: H-B 6

Kabelverschraubung / Cable gland / Presse-étoupe: 5.1: Metr. & PG

H-B 10

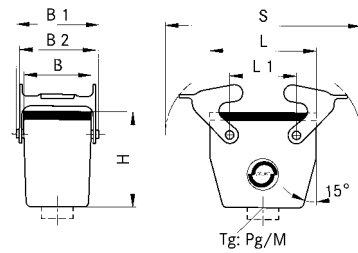
Artikel part article	Art.Nr. part No. N° art.	PG	M	ZW	L	L1	L2	L3	L4	B	B1	B2	B3	B4	B5	H	H1	H2	S	d
H-B 10 TBF-LB 16	10046900	16		●	73	91	88,5			43						54,8			50	
H-B 10 TBF-LB 21	70042200	21		●																
H-B 10 TBF-LB M20	19046900		20		73	91	88,5			43						54,8			50	
H-B 10 TBF-LB M25	79042200		25																	

Einsätze / Inserts / Inserts: 1.4: H-BE 10 / 1.5: H-EE 18 / 1.7: H-BVE 3 / 1.9: H-DD 42 / 1.10: MC 10

Kabelverschraubung / Cable gland / Presse-étoupe: 5.1: Metr. & PG

3.2 EPIC® D A - V I N C I H - B

Kupplungsgehäuse / Cable coupler hood / Capot prolongateur



EPIC® H-B Gehäuse: Kupplungsgehäuse (Kabeleingang gerade, Querbügel)

EPIC® H-B housings: cable coupler hood (top entry, double locking lever)

Boîtiers EPIC® H-B: capot prolongateur (sortie verticale, double levier)

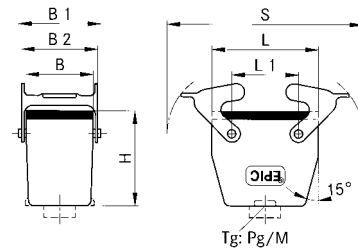
H-B 10

Artikel part article	Art.Nr. part No. N° art.	PG	M	ZW	L	L1	L2	L3	L4	B	B1	B2	B3	B4	B5	H	H1	H2	S	d
H-B 10 TBF 16	10046000	16	●		73	27				43	57,8	53				54,8				116
H-B 10 TBF 21	70040200	21	●																	
H-B 10 TBF M20	19046000			20	73	27				43	57,8	53				54,8				116
H-B 10 TBF M25	79040200			25																

Einsätze / Inserts / Inserts: 1.4: H-BE 10 / 1.5: H-EE 18 / 1.7: H-BVE 3 / 1.9: H-DD 42 / 1.10: MC 10

Deckel / Cover / Couvercle: 6.1: H-B 10

Kabelverschraubung / Cable gland / Presse-étoupe: 5.1: Metr. & PG



H-B 16

Artikel part article	Art.Nr. part No. N° art.	PG	M	ZW	L	L1	L2	L3	L4	B	B1	B2	B3	B4	B5	H	H1	H2	S	d
H-B 16 TBF 21	10086000	21	●		93,3	47,5				43	57,8	53				63,6				136,5
H-B 16 TBF M25	19086000			25	93,3	47,5				43	57,8	53				63,6				136,5

Einsätze / Inserts / Inserts: 1.4: H-BE 16 / 1.5: H-EE 32 / 1.6: H-BS 6 / 1.7: H-BVE 6 / 1.8: H-D 40 / 1.9: H-DD 72 / 1.10: MC 16

Deckel / Cover / Couvercle: 6.1: H-B 16

Kabelverschraubung / Cable gland / Presse-étoupe: 5.1: Metr. & PG

H-B 24

Artikel part article	Art.Nr. part No. N° art.	PG	M	ZW	L	L1	L2	L3	L4	B	B1	B2	B3	B4	B5	H	H1	H2	S	d
H-B 24 TBF 21	10127000	21	●		120	74				43	57,8	53				63,8				163
H-B 24 TBF 29	10117000	29	●																	
H-B 24 TBF M25	19127000			25	120	74				43	57,8	53				63,8				163
H-B 24 TBF M32	19117000			32																

Einsätze / Inserts / Inserts: 1.4: H-BE 24 / 1.5: H-EE 46 / 1.7: H-BVE 10 / 1.8: H-D 64 / 1.9: H-DD 108 / 1.10: MC 24

Deckel / Cover / Couvercle: 6.1: H-B 24

Kabelverschraubung / Cable gland / Presse-étoupe: 5.1: Metr. & PG