

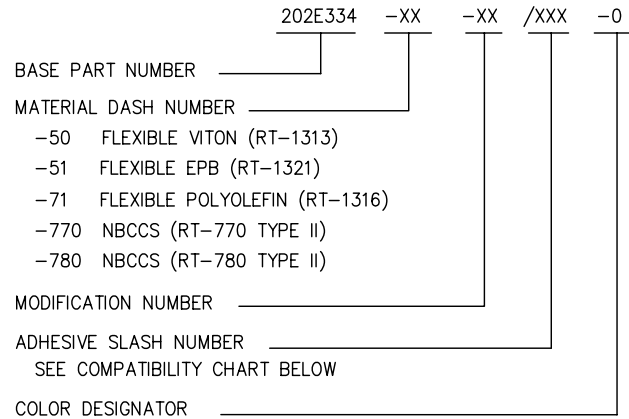
NOTES

1. ALL DIMENSIONS ARE IN $\frac{\text{INCHES}}{[\text{MILLIMETERS}]}$

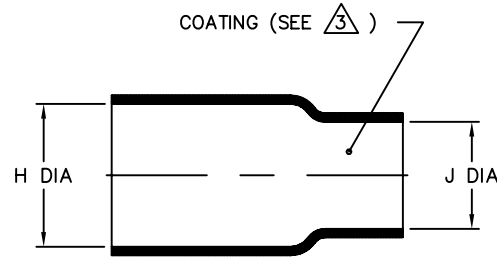
2. DIMENSIONS APPEARING IN TABLE ARE AS FOLLOWS:
 a - AS SUPPLIED
 b - AFTER UNRESTRICTED RECOVERY

③ COATING (ADHESIVE): IS OPTIONAL AS SUPPLIED DIMENSIONS APPEARING IN TABLE ARE FOR UNCOATED PARTS. WHEN COATING IS ADDED, ENTRY DIAMETER WILL BE REDUCED BY .06 MAX.

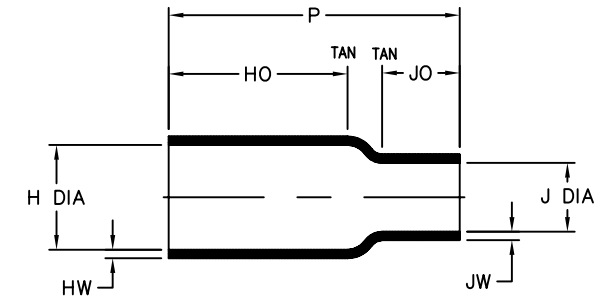
4. ORDERING INFORMATION:



REVISIONS		
LTR	DESCRIPTION	DATE
T	ECO-09-016592	07/15/2009



AS SUPPLIED



AFTER UNRESTRICTED RECOVERY

PART DESCRIPTION	H		J		P ±10% b	HO ±10% b	JO ±10% b	HW ±25% b	JW ±25% b
	MIN	MAX	MIN	MAX					
	a	b	a	b					
202E334	<u>.50</u> [12,7]	<u>.42</u> [10,7]	<u>.44</u> [11,2]	<u>.11</u> [2,8]	<u>2.50</u> [63,5]	<u>1.62</u> [41,1]	<u>.62</u> [15,7]	<u>.06</u> [1,52]	<u>.06</u> [1,52]
202E336	<u>.82</u> [20,8]	<u>.42</u> [10,7]	<u>.81</u> [20,6]	<u>.21</u> [5,3]	<u>2.50</u> [63,5]	<u>1.62</u> [41,1]	<u>.65</u> [16,5]	<u>.06</u> [1,52]	<u>.06</u> [1,52]
202E344	<u>.87</u> [22,1]	<u>.74</u> [18,8]	<u>.44</u> [11,2]	<u>.10</u> [2,5]	<u>2.10</u> [53,3]	<u>1.10</u> [27,9]	<u>.62</u> [15,7]	<u>.09</u> [2,29]	<u>.06</u> [1,52]
202E346	<u>.87</u> [22,1]	<u>.74</u> [18,8]	<u>.81</u> [20,6]	<u>.31</u> [7,9]	<u>2.10</u> [53,3]	<u>1.10</u> [27,9]	<u>.55</u> [14,0]	<u>.09</u> [2,29]	<u>.06</u> [1,52]

If this document is printed it becomes uncontrolled. Check for the latest revision

COMPATIBILITY CHART

MATERIAL DASH NO.	ADHESIVE (COATING) SLASH NO.	ADHESIVE (COATING) S NO.
-50	N/A	N/A
-51	/86; /164; /180	S-1048; S-1124; S-1030
-71	/42; /86; /180	S-1017; S-1048; S-1030
-770	N/A	N/A
-780	N/A	N/A

UNLESS OTHERWISE SPECIFIED DIMENSIONS ARE INCHES. METRIC DIMENSIONS ARE IN BRACKETS.
 DECIMAL TOLERANCES
 .XXX ± 0.005 [0.13 mm]
 .XX ± 0.01 [0.25 mm]
 .X ± 0.1 [0.50 mm]
 ANGLE TOLERANCE
 .X ± 1 DEG.
 TYCO ELECTRONICS RESERVES THE RIGHT TO AMEND THIS DRAWING AT ANY TIME. USERS SHOULD EVALUATE THE SUITABILITY OF THE PRODUCT FOR THEIR APPLICATION.
 © 2008-2009 Tyco Electronics Corporation. All rights reserved.

DRAWN
YUNGUYEN
 APPROVED
STRAN
 THIRD ANGLE PROJECTION

Tyco Electronics
 Raychem Molded Parts
 305 Constitution Dr
 Menlo Park, CA 94025

CUSTOMER DRAWING

TITLE
BOOT, STRAIGHT
 SIZE B CODE IDENT. NO. 06090 DWG. NO. 202E334thru346
 DO NOT SCALE THIS DRAWING SHEET 1 OF 1

Mouser Electronics

Authorized Distributor

Click to View Pricing, Inventory, Delivery & Lifecycle Information:

[TE Connectivity:](#)

[202E344-51-0](#)