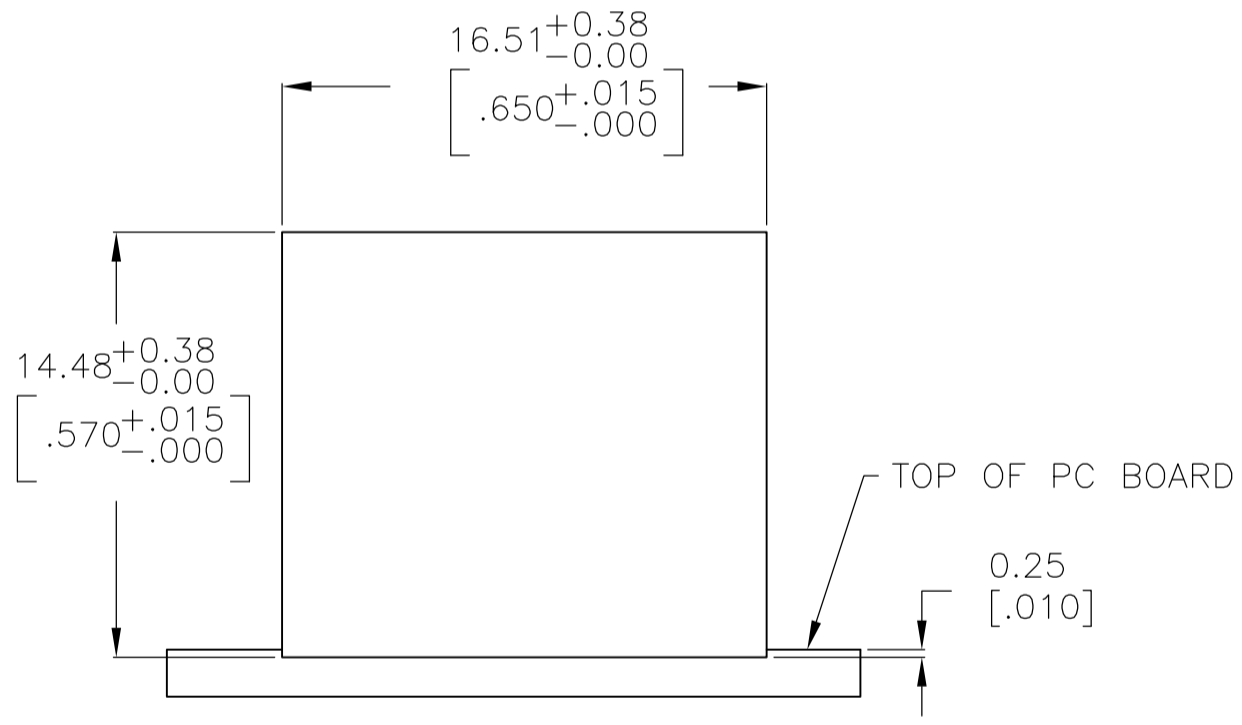
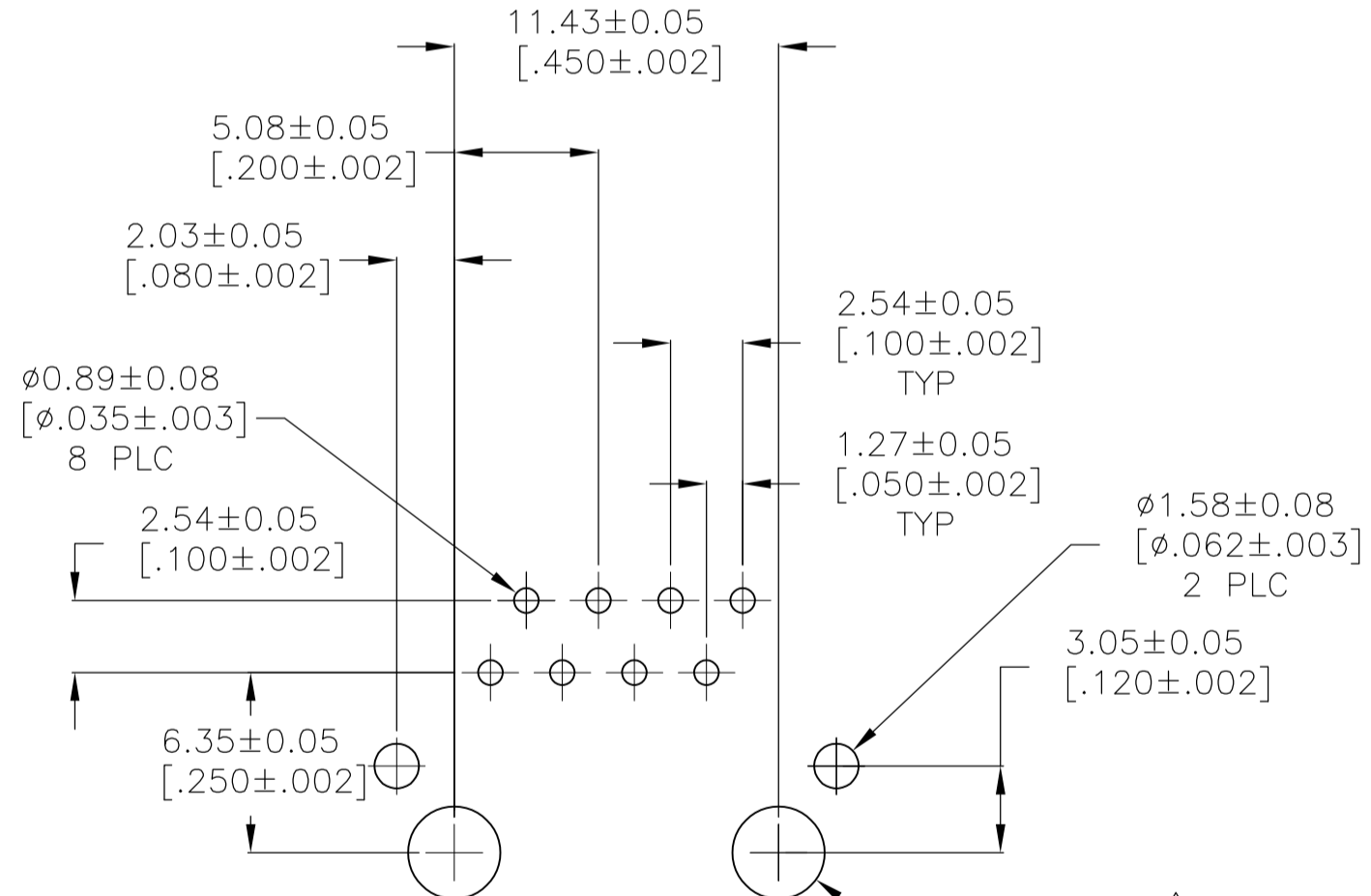
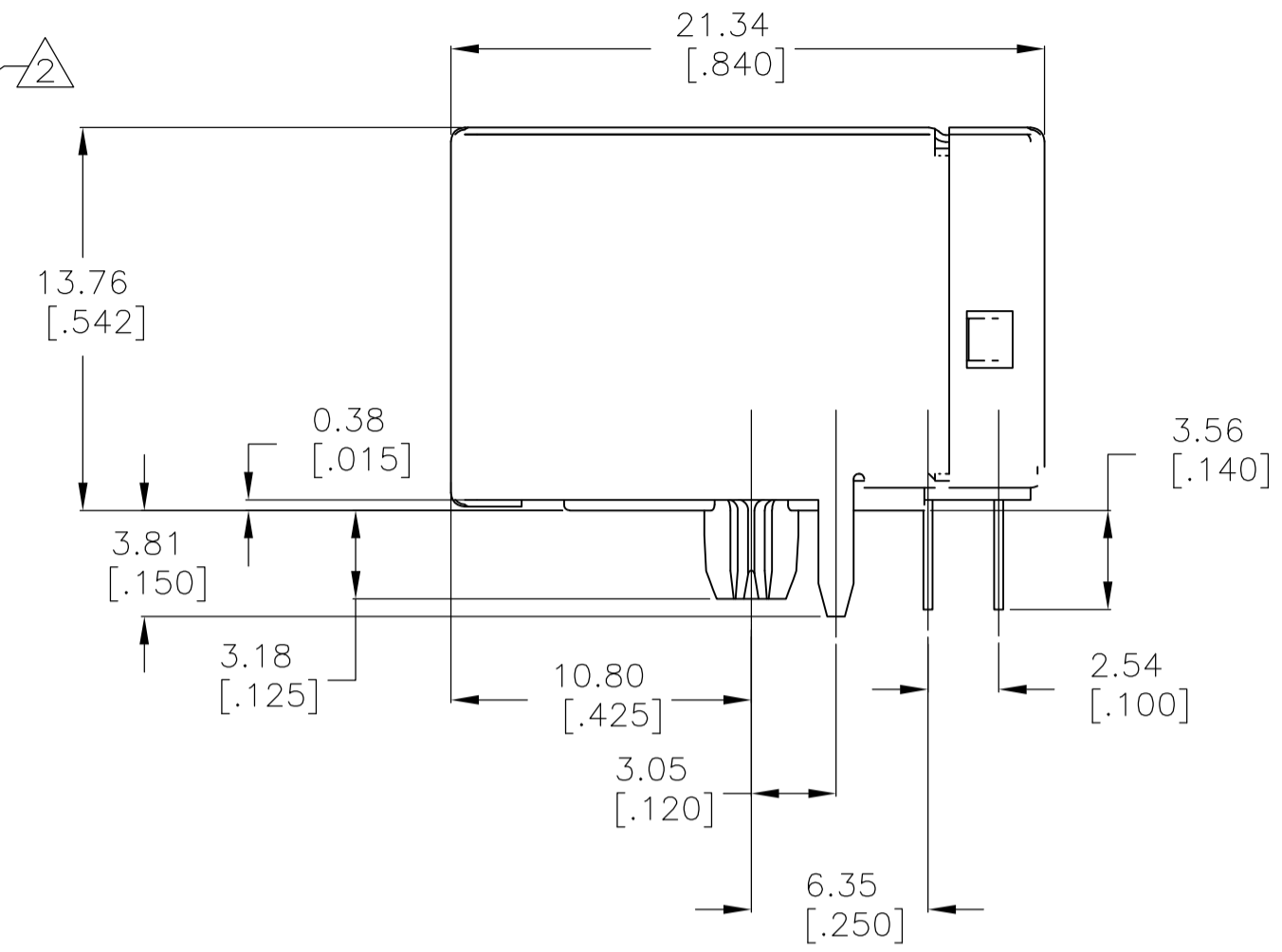
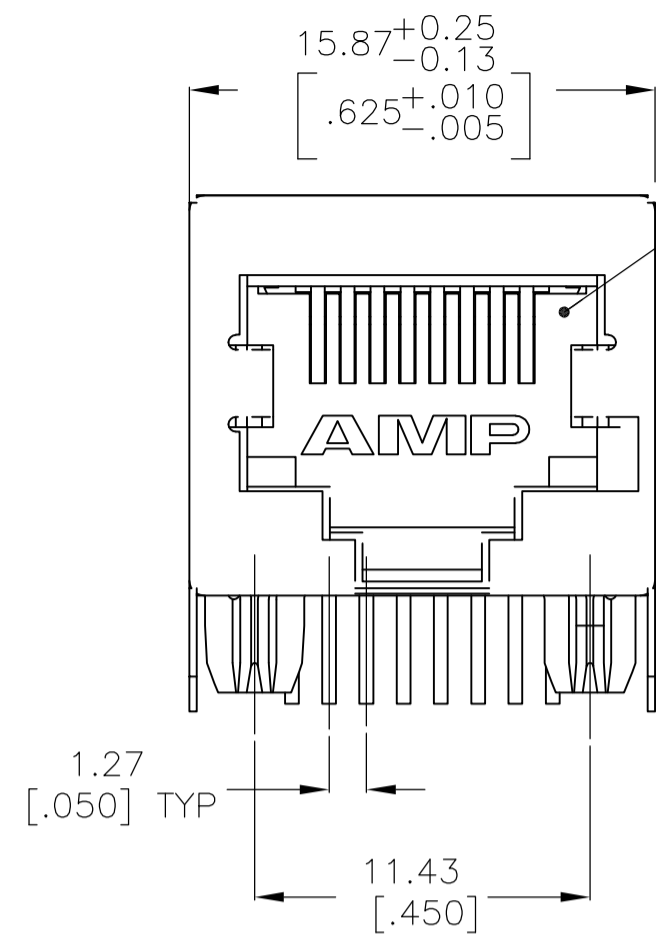
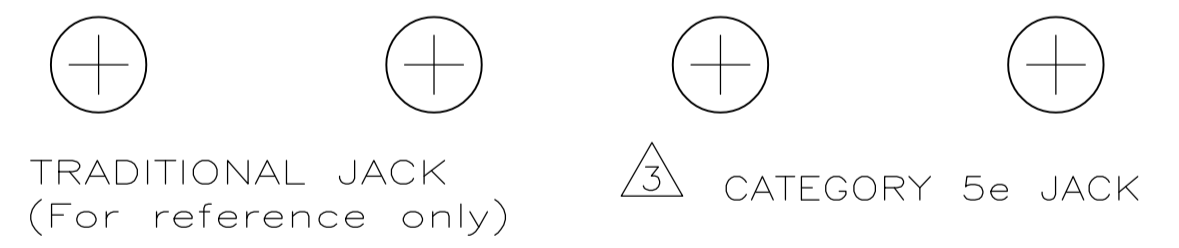


THIS DRAWING IS UNPUBLISHED. RELEASED FOR PUBLICATION
 © COPYRIGHT - By - ALL RIGHTS RESERVED.

LOC	DIST	REVISIONS					
AA	00	P	LTR	DESCRIPTION	DATE	DWN	APVD
		D1		REVISED PER ECO-11-005033	26MAR11	RK	HMR
		E		ECO-11-019003	19SEP11	JJ	MQW
		F		ECO-13-009636	9JUN13	C.W.S.H	



- MATERIAL: HOUSING HTN, BLACK.
 TERMINALS - 0.33 [TYP] THICK PHOS BRONZE PLATED WITH $1.27 \mu\text{m}$ [TYP] MINIMUM THICK HARD GOLD IN LOCALIZED AREA AND $3.81 \mu\text{m}$ [TYP] MINIMUM THICK MATTE TIN IN SOLDER AREA OVER $1.27 \mu\text{m}$ [TYP] MINIMUM THICK NICKEL UNDERPLATE.
 SHIELDS - 0.254 [TYP] THICK COPPER ALLOY PLATED WITH $1.27 \mu\text{m}$ [TYP] MINIMUM NICKEL AND $2.03 \mu\text{m}$ [TYP] MINIMUM HOT TIN DIP ON PCB GROUND TABS.
- JACK CAVITY CONFORMS TO FCC RULES AND REGULATIONS, PART 68 SUBPART F.
- CAUTION: CATEGORY 5 JACK SOLDER TAIL POSITIONS DO NOT FOLLOW SAME NUMBER SEQUENCE AS THAT OF TRADITIONAL JACKS.
- USE #30 DRILL BIT OR 3.25mm DRILL BIT WHEN PRODUCING THESE PCB HOLES.
- OBSOLETE PARTS: OBSOLETE CIS STREAMLINING PER D.RENAUD/D.SINISI
- SHIELD MATERIAL: PHOS BRONZE.



SUGGESTED PC BOARD LAYOUT COMPONENT SIDE

SUGGESTED PANEL CUTOUT SCALE 4:1

$\triangle 6$	BLACK	5558342-3
$\triangle 5$ OBSOLETE	GRAY	5558342-2
	BLACK	5558342-1
	HOUSING COLOR	PART NUMBER

THIS DRAWING IS A CONTROLLED DOCUMENT.		DWN	01JUNE2005	TE Connectivity	
		CHK	T. PITTS/L.A.MAYER		
		APVD	J.WESTMAN		
		APVD	S.FLICKINGER		
		PRODUCT SPEC	108-1163-2		
		APPLICATION SPEC	114-2048		
MATERIAL		FINISH	WEIGHT	SIZE	CAGE CODE
SEE NOTE 1		SEE NOTE 1	-	A2	00779
				SCALE	SHEET
				4:1	1 OF 1
				REV	F