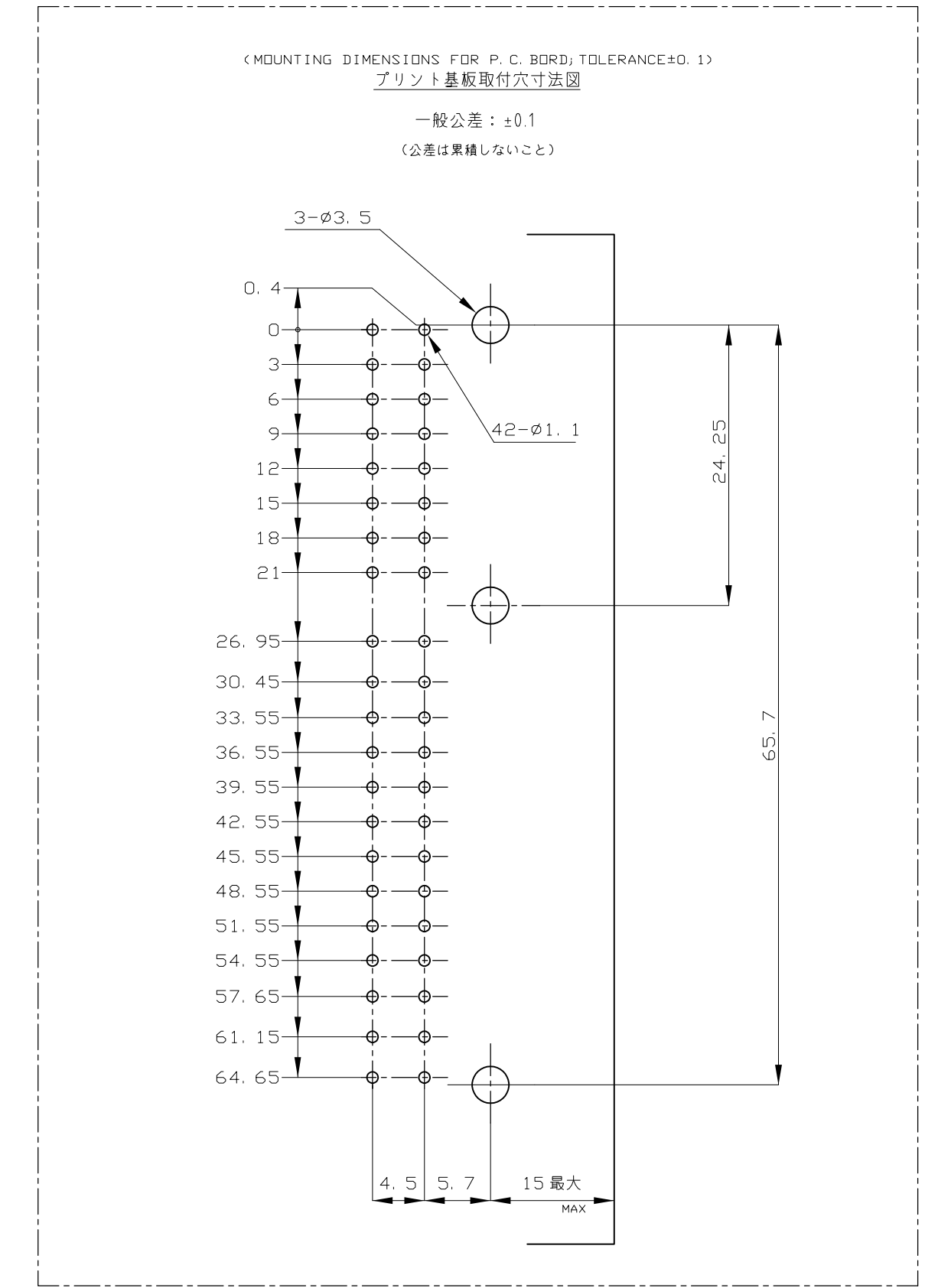
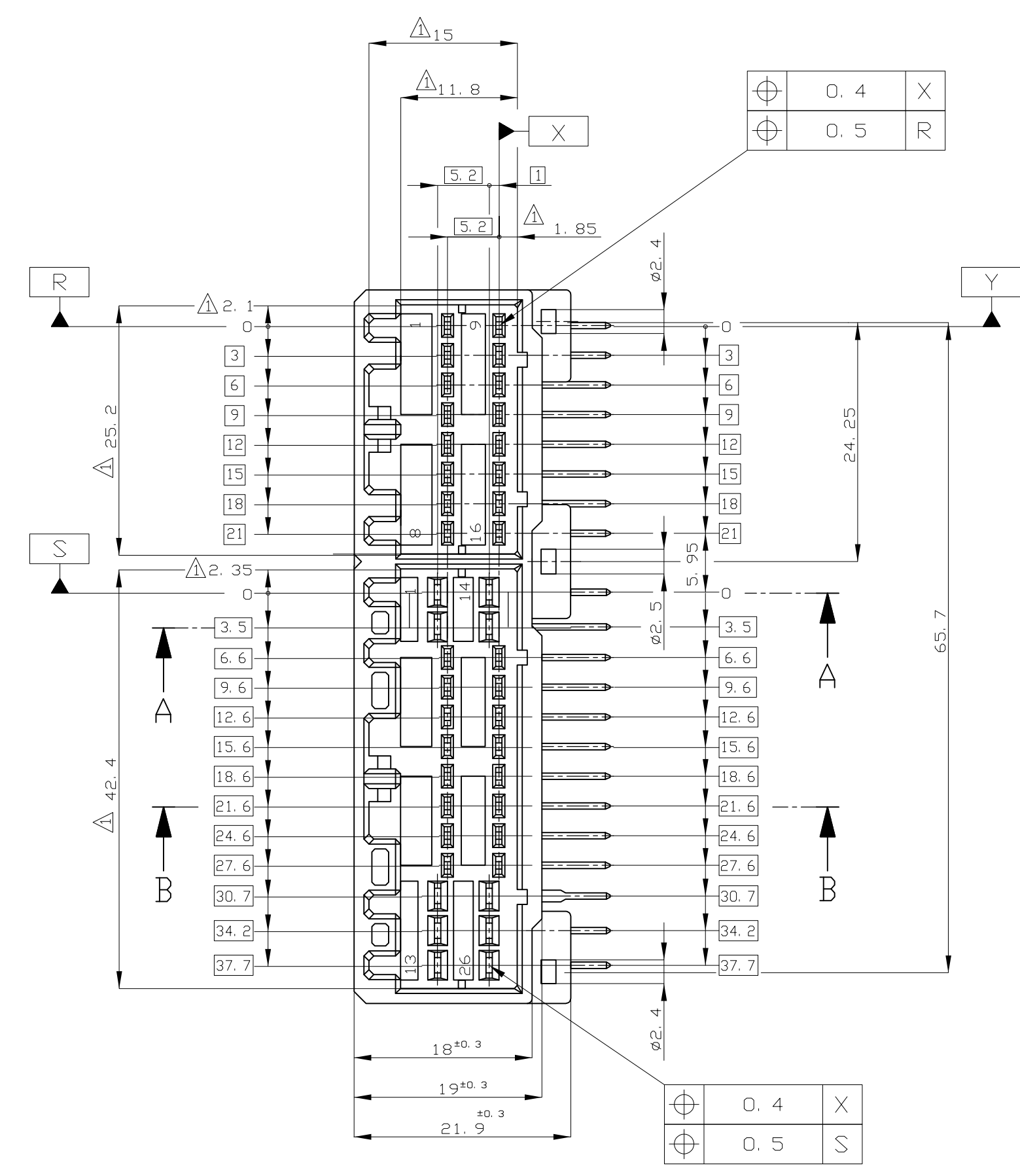
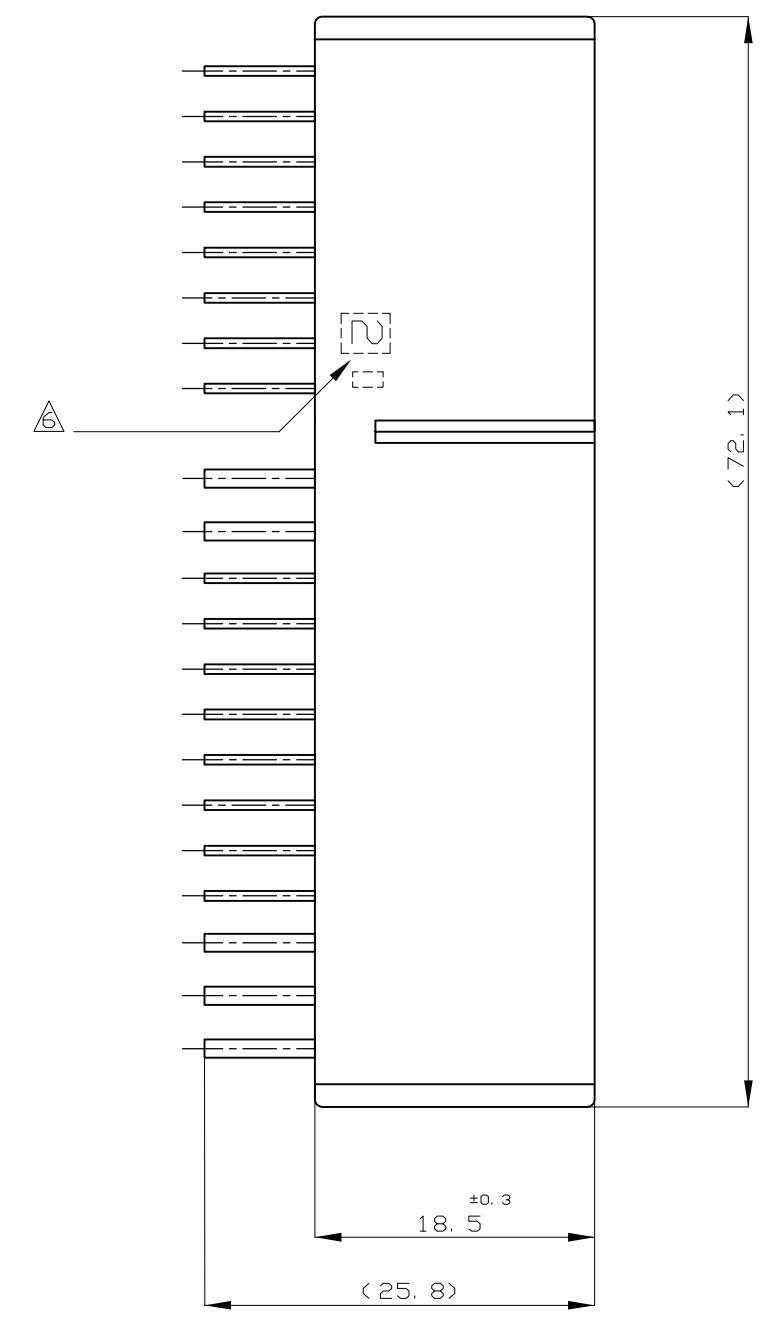
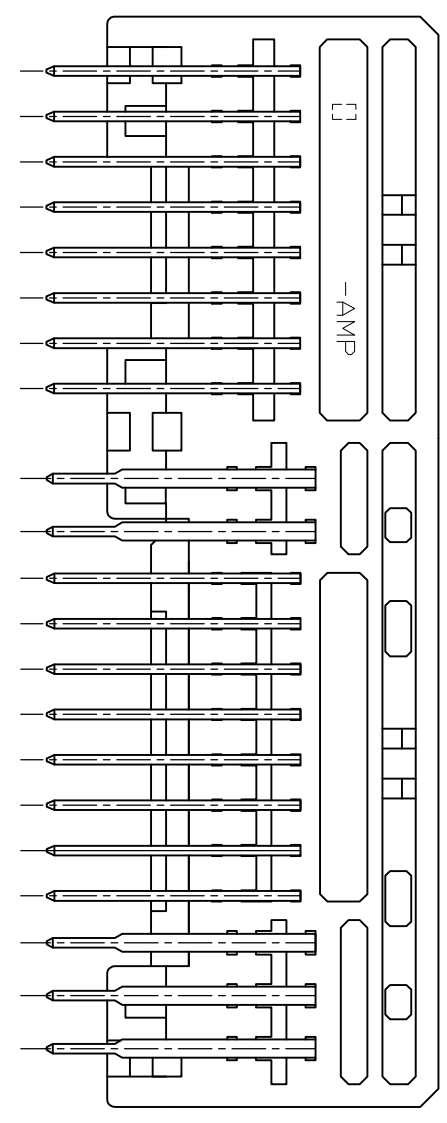
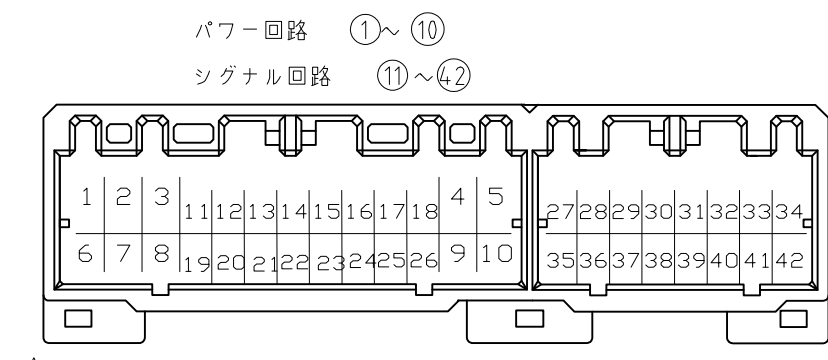


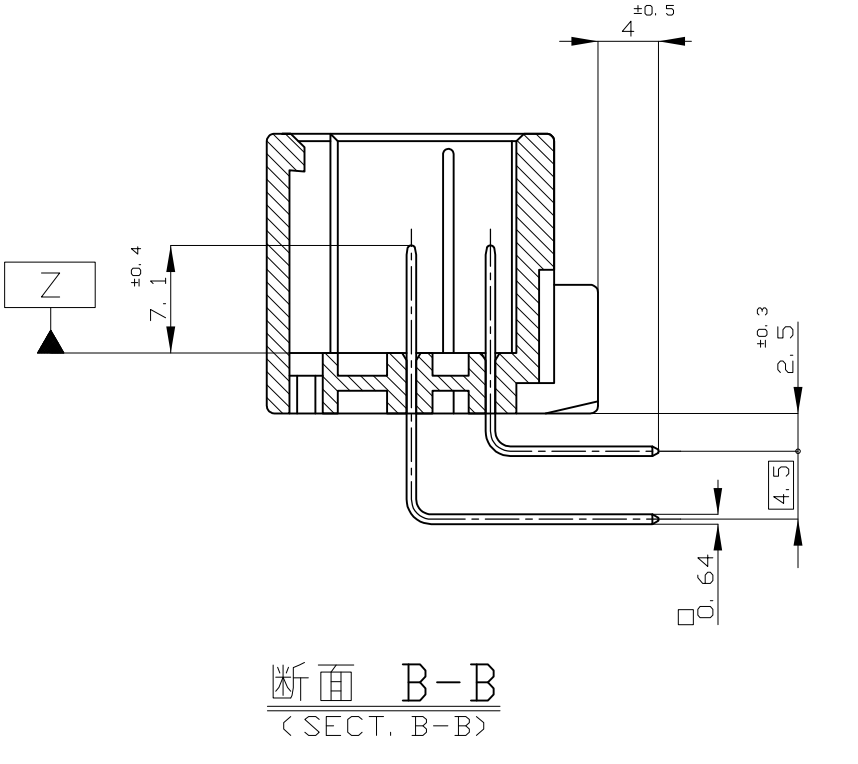
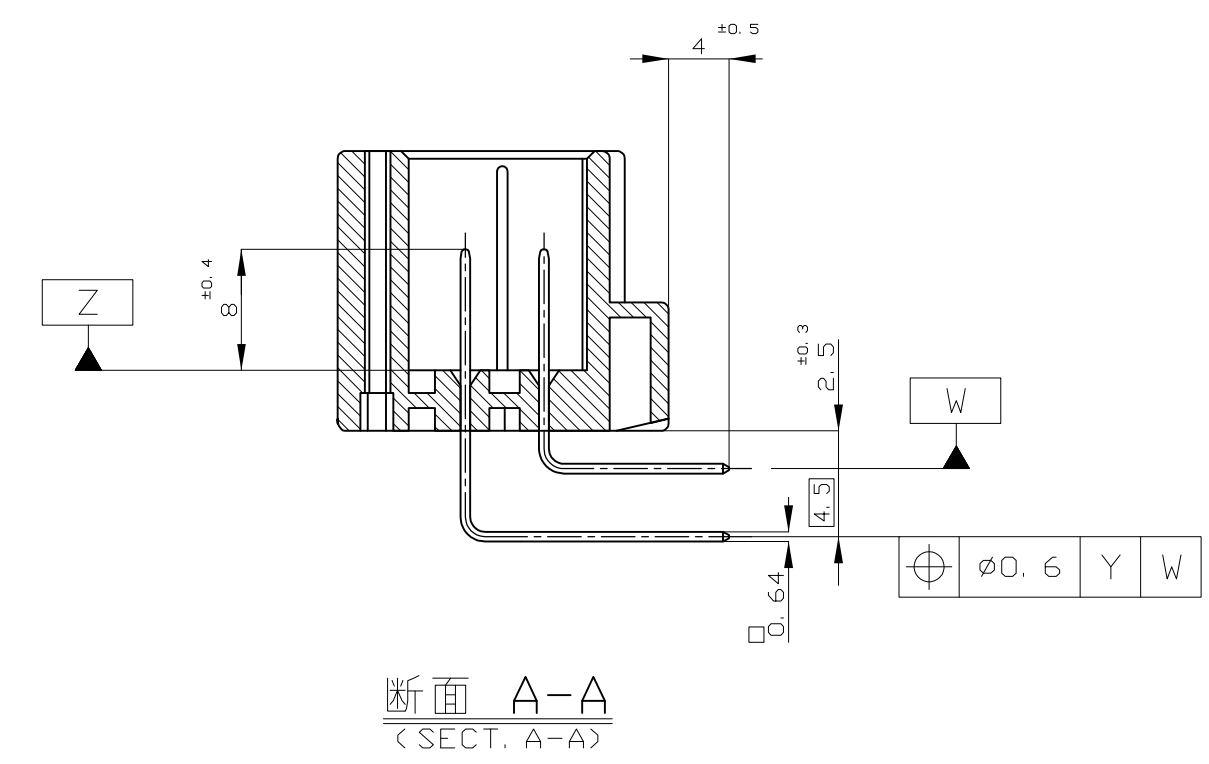
REVISONS		DATE	DWN	APVD
NO.	DESCRIPTION			
N4	REVISED PER ECO-11-005140	29MAR11	RK	HMR



- △ □ 面から2mmの範囲で測定
- 2 嵌合相手ハジリング型 174514, 174516
- 3 推奨取付ねじ: JIS B1115, B1122 タッピングねじ, なべ2種
呼び径3, 長さ6mm以下 (締付けトルク: 0.4N-m (4kg-cm) 以下)
- 4 適用製品規格番号: 108-5280



- △ 適用製品番号のアプレフィックス及びIDマークをカラーホットマークにて表示
- △ MUST BE KEPT BETWEEN □ AND 2
- 2 THE MATING PLUG HSG. PART NUMBER; 174514, 174516
- 3 RECOMMENDED MOUNTING SCREW; 3mmDIA, 6mmLENGTH(MAX.)
- PAN HEAD, CLASS 2 TAPPING SCREW SPECIFIED IN JIS B1115, B1122
- < TIGHTENING TORQUE; 0.4N-m (4kg-cm) MAX. >
- 4 APPLICABLE PRODUCT SPEC NO.; 108-5280
- △ CIRCUIT NUMBER
- POWER CIRCUIT NO. ①~⑩
- SIGNAL CIRCUIT NO. ⑪~④②
- △ INDICATED PREFIX AND ID MARK OF PRODUCT P/N BY COLOR HOT MARK



MARKING	FINISH OF CONTACT	CONTACT SIDE	POWER CIRCUIT NO.	SIGNAL CIRCUIT NO.	HOUSING COLOR	PART NO.
55	SELECTIVE-TIN (MATTE)	SELECTIVE GOLD × 12	---	①-②③④⑤⑥⑦⑧⑨⑩	WHITE 白色	5-175446-1
9	TIN-LEAD	SELECTIVE-TIN (BRIGHT) × 30	---	⑪⑫⑬⑭⑮⑯⑰⑱⑲⑳㉑㉒㉓㉔㉕㉖㉗㉘㉙㉚㉛㉜㉝㉞㉟	GRAY 灰色	9-175446-6
8	TIN-LEAD	PRE-TINNED × 48	---	①②③④⑤⑥⑦⑧⑨⑩⑪⑫⑬⑭⑮⑯⑰⑱⑲⑳㉑㉒㉓㉔㉕㉖㉗㉘㉙㉚㉛㉜㉝㉞㉟	GRAY 灰色	8-175446-6
8	TIN-LEAD	SELECTIVE GOLD × 16	---	①②③④⑤⑥⑦⑧⑨⑩⑪⑫⑬⑭⑮⑯⑰⑱⑲⑳㉑㉒㉓㉔㉕㉖㉗㉘㉙㉚㉛㉜㉝㉞㉟	BLACK 黒色	8-175446-2
8	TIN-LEAD	PRE-TINNED × 26	---	①②③④⑤⑥⑦⑧⑨⑩⑪⑫⑬⑭⑮⑯⑰⑱⑲⑳㉑㉒㉓㉔㉕㉖㉗㉘㉙㉚㉛㉜㉝㉞㉟	WHITE 白色	8-175446-1
7	TIN-LEAD	PRE-TINNED × 39	---	①②③④⑤⑥⑦⑧⑨⑩⑪⑫⑬⑭⑮⑯⑰⑱⑲⑳㉑㉒㉓㉔㉕㉖㉗㉘㉙㉚㉛㉜㉝㉞㉟	BLUE 青色	7-175446-5
6	TIN-LEAD	PRE-TINNED × 17	⑨	⑲⑳㉑㉒㉓㉔㉕㉖㉗㉘㉙㉚㉛㉜㉝㉞㉟	WHITE 白色	6-175446-1
5	TIN-LEAD	SELECTIVE GOLD × 12	---	①②③④⑤⑥⑦⑧⑨⑩⑪⑫⑬⑭⑮⑯⑰⑱⑲⑳㉑㉒㉓㉔㉕㉖㉗㉘㉙㉚㉛㉜㉝㉞㉟	WHITE 白色	5-175446-1
4	TIN-LEAD	PRE-TINNED × 11	⑩	⑳㉑㉒㉓㉔㉕㉖㉗㉘㉙㉚㉛㉜㉝㉞㉟	GRAY 灰色	4-175446-6
4	TIN-LEAD	SELECTIVE GOLD × 8	---	①②③④⑤⑥⑦⑧⑨⑩⑪⑫⑬⑭⑮⑯⑰⑱⑲⑳㉑㉒㉓㉔㉕㉖㉗㉘㉙㉚㉛㉜㉝㉞㉟	WHITE 白色	4-175446-1
3	TIN-LEAD	PRE-TINNED × 34	---	①②③④⑤⑥⑦⑧⑨⑩⑪⑫⑬⑭⑮⑯⑰⑱⑲⑳㉑㉒㉓㉔㉕㉖㉗㉘㉙㉚㉛㉜㉝㉞㉟	GRAY 灰色	3-175446-6
3	TIN-LEAD	SELECTIVE GOLD × 6	---	①②③④⑤⑥⑦⑧⑨⑩⑪⑫⑬⑭⑮⑯⑰⑱⑲⑳㉑㉒㉓㉔㉕㉖㉗㉘㉙㉚㉛㉜㉝㉞㉟	GRAY 灰色	3-175446-6
3	TIN-LEAD	PRE-TINNED × 26	---	①②③④⑤⑥⑦⑧⑨⑩⑪⑫⑬⑭⑮⑯⑰⑱⑲⑳㉑㉒㉓㉔㉕㉖㉗㉘㉙㉚㉛㉜㉝㉞㉟	WHITE 白色	3-175446-1
3	TIN-LEAD	SELECTIVE GOLD × 8	---	①②③④⑤⑥⑦⑧⑨⑩⑪⑫⑬⑭⑮⑯⑰⑱⑲⑳㉑㉒㉓㉔㉕㉖㉗㉘㉙㉚㉛㉜㉝㉞㉟	WHITE 白色	3-175446-1
2	TIN-LEAD	PRE-TINNED × 34	---	①②③④⑤⑥⑦⑧⑨⑩⑪⑫⑬⑭⑮⑯⑰⑱⑲⑳㉑㉒㉓㉔㉕㉖㉗㉘㉙㉚㉛㉜㉝㉞㉟	WHITE 白色	3-175446-1
2	TIN-LEAD	SELECTIVE GOLD × 32	---	①②③④⑤⑥⑦⑧⑨⑩⑪⑫⑬⑭⑮⑯⑰⑱⑲⑳㉑㉒㉓㉔㉕㉖㉗㉘㉙㉚㉛㉜㉝㉞㉟	GRAY 灰色	2-175446-6
2	TIN-LEAD	PRE-TINNED × 18	---	①②③④⑤⑥⑦⑧⑨⑩⑪⑫⑬⑭⑮⑯⑰⑱⑲⑳㉑㉒㉓㉔㉕㉖㉗㉘㉙㉚㉛㉜㉝㉞㉟	WHITE 白色	2-175446-1
2	TIN-LEAD	SELECTIVE GOLD × 32	---	①②③④⑤⑥⑦⑧⑨⑩⑪⑫⑬⑭⑮⑯⑰⑱⑲⑳㉑㉒㉓㉔㉕㉖㉗㉘㉙㉚㉛㉜㉝㉞㉟	WHITE 白色	2-175446-1
2	TIN-LEAD	PRE-TINNED × 10	---	①②③④⑤⑥⑦⑧⑨⑩⑪⑫⑬⑭⑮⑯⑰⑱⑲⑳㉑㉒㉓㉔㉕㉖㉗㉘㉙㉚㉛㉜㉝㉞㉟	WHITE 白色	2-175446-1
0	PRE-TINNED	---	---	---	GRAY 灰色	175446-6
1	SELECTIVE-TIN (MATTE)	SELECTIVE-TIN (鏡めっき) × 42	---	---	WHITE 白色	175446-2
0	PRE-TINNED	鏡めっき × 42	---	---	WHITE 白色	175446-1

GENERAL TOLERANCE

0 < X < 1	± 0.2
1 ≤ X < 30	± 0.25
30 ≤ X < 100	± 0.3
X ≥ 100	± 0.3

THIS DRAWING IS A CONTROLLED DOCUMENT.

APVD: M. KADOSAKI 17MAY05
 CHK: T. SHINOHARA 17MAY05

APVD: K. BETSUJI 17MAY05

PRODUCT SPEC: 42POSITION CAP HOUSING ASSY
 APPLICATION SPEC: 040/070 SERIES HYBRID I/O CONNECTOR

SIZE: A1
 CASE CODE: 00779
 DRAWING NO: 175446

SCALE: 2:1
 SHEET: 1 of 1
 REV: N4