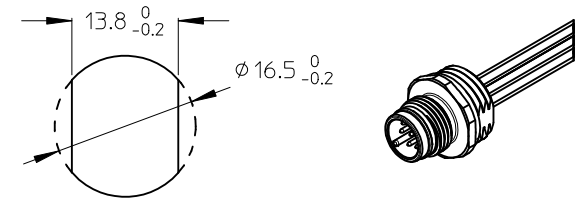


- Wiring Diagram:
- 1 - WHITE / weiß
 - 2 - BROWN / braun
 - 3 - GREEN / grün
 - 4 - YELLOW / gelb
 - 5 - GREY / grau
 - 6 - PINK / rosa
 - 7 - BLUE / blau
 - 8 - RED / rot



ITEM	COMPONENT	MATERIAL	FINISH
1	REC SHELL	BRASS	NICKEL PLATED
2	INSERT	PA	BLACK
3	CONTACT	BRASS / GOLD	CuZn Ni/ Au
4	WIRES	COPPER/PVC	NONE
5	O-RING	NBR	BLACK
6	POTTING MATERIAL	EPOXY	NONE

POL	MATERIAL NO.	ENGINEERING NO.	FINISHED LENGTH
8	1200845096	WR8U26E02C300	300 ±10
8	1200845003	WR8U26E02M010	1000 ±10

VOLTAGE RATING: 30 VAC / 36 VDC
 AMPERAGE RATING: 2 A
 PROTECTION CLASS: IP 67/68/69K
 OPERATING TEMPERATURE: -25°C / 90°C
 UL CERTIFICATION: FILE NO. E152210
 CSA CERTIFICATIONS: FILE NO. LR6837

ENTER DESCRIPTION EC NO: WEU2010-0598 DRW: CFOERDERER 2010/06/14 CHK: RSTILLER 2010/06/14 APPR: APOHL 2010/06/16	QUALITY SYMBOLS	GENERAL TOLERANCES (UNLESS SPECIFIED)		DIMENSION STYLE MM ONLY		SCALE 2:1	DESIGN UNITS METRIC	THIRD ANGLE PROJECTION	
	▽=0 ◻=0	4 PLACES	mm	INCH	DRAWN BY	DATE	TITLE M12U 8-P REC MALE FRONT M16X1.5 0,25MM2		
		3 PLACES	±---	±---	CHECKED BY	DATE			
		2 PLACES	±0.05	±---	APPROVED BY	DATE	MATERIAL NO. SEE TABLE		
1 PLACE	±0.1	±---	DATE	2010/02/01	DOCUMENT NO. SD-120084-020				
ANGULAR ±---°				MATERIAL NO.				SHEET NO. 1 OF 1	
DRAFT WHERE APPLICABLE MUST REMAIN WITHIN DIMENSIONS				SIZE A3		THIS DRAWING CONTAINS INFORMATION THAT IS PROPRIETARY TO MOLEX INCORPORATED AND SHOULD NOT BE USED WITHOUT WRITTEN PERMISSION			