

SERIES: ACZ11 | **DESCRIPTION:** MECHANICAL INCREMENTAL ENCODER**ELECTRICAL SPECIFICATIONS**

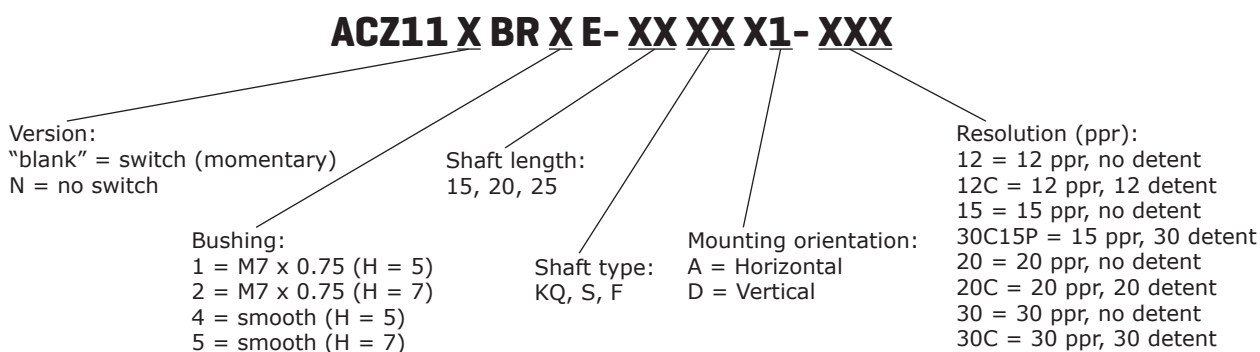
| parameter | conditions/description |
|-------------------------|---|
| output waveform | square wave |
| output signals | A, B phase |
| current consumption | 10 mA |
| output phase difference | T1, T2, T3, T4 \geq 3.5 ms @ 60 rpm (see output waveform) |
| supply voltage | 5 V dc max. |
| output resolution | 12, 15, 20, 30 ppr |
| switch rating | 12 V dc, 50 mA (ACZ11BRXE models only) |
| insulation resistance | 300 V dc, 100 M Ω |
| withstand voltage | 300 V ac |

MECHANICAL SPECIFICATIONS

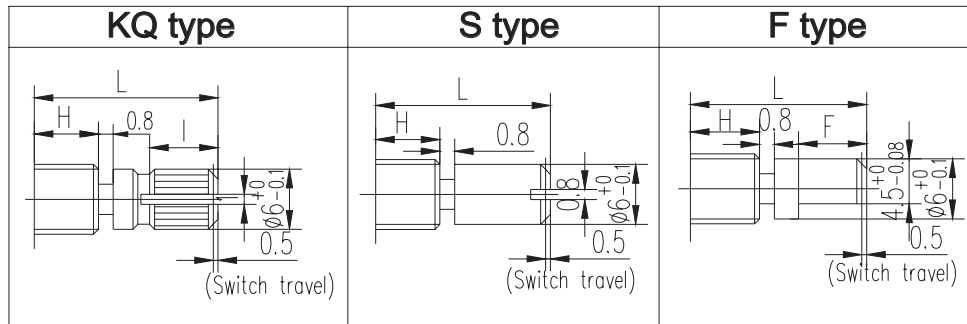
| parameter | conditions/description | min | nom | max | units |
|-------------------------------|-------------------------|-----|-----|--------|--------|
| shaft load | axial | | | 8 | kgf |
| rotational torque | with detent click | 60 | 140 | 220 | gf•cm |
| | without detent click | 60 | 80 | 100 | gf•cm |
| push switch operational force | (ACZ11BRXE models only) | 300 | | 900 | gf•cm |
| push switch life | (ACZ11BRXE models only) | | | 50,000 | cycles |
| rotational life | | | | 30,000 | cycles |

ENVIRONMENTAL SPECIFICATIONS

| parameter | conditions/description | min | nom | max | units |
|-----------------------|---------------------------------|-----|-----|-----|-------|
| operating temperature | | -10 | | 65 | °C |
| storage temperature | | -40 | | 75 | °C |
| humidity | | 85 | | | % RH |
| vibration | 0.75 mm max. travel for 2 hours | 10 | | 55 | Hz |

PART NUMBER KEY

SHAFT OPTIONS



| BUSHING | | |
|-----------|---|---|
| Condition | H | |
| 1 M7-P0.7 | 5 | 5 |
| 2 M7-P0.7 | 5 | 7 |
| 4 smooth | 5 | |
| 5 smooth | 7 | |

switch travel for ACZ11BRXE only

H=5

| | 15KQ | 20KQ | 25KQ |
|---|------|------|------|
| L | 15 | 20 | 25 |
| I | 7 | 10 | 12 |

H=5

| | 15S | 20S | 25S |
|---|-----|-----|-----|
| L | 15 | 20 | 25 |

H=5

| | 15F | 20F | 25F |
|---|-----|-----|-----|
| L | 15 | 20 | 25 |
| F | 8 | 12 | 12 |

H=7

| | 15KQ | 20KQ | 25KQ |
|---|------|------|------|
| L | 15 | 20 | 25 |
| I | 5 | 8.5 | 10 |

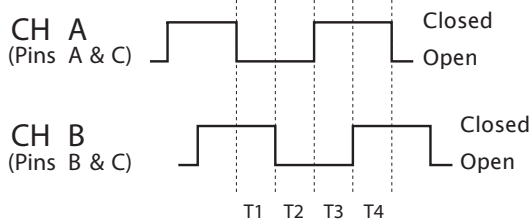
H=7

| | 15S | 20S | 25S |
|---|-----|-----|-----|
| L | 15 | 20 | 25 |

H=7

| | 15F | 20F | 25F |
|---|-----|-----|-----|
| L | 15 | 20 | 25 |
| F | 8 | 12 | 12 |

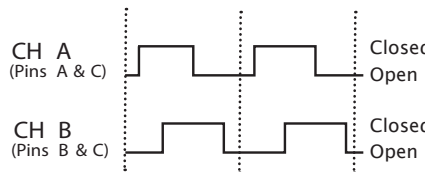
OUTPUT WAVEFORM



CW direction (@ 60 rpm)

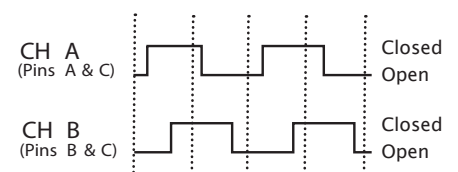
DETENT POSITIONS

Model 12C & 20C



CW direction →

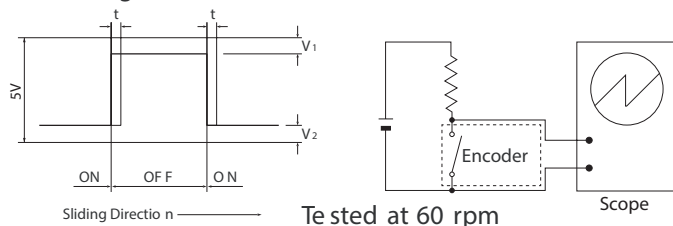
Model 15P30C



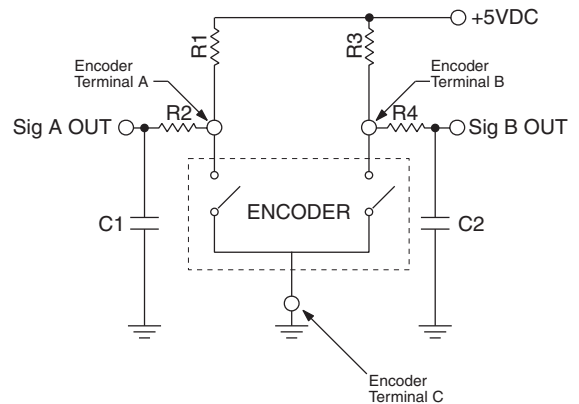
CW direction →

SLIDING NOISE

$t =$ Masking time to avoid chatter (5mS) $V_1 = V_2 = 1V$ max.



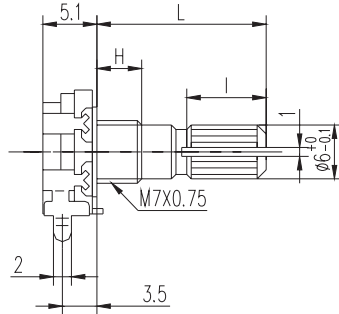
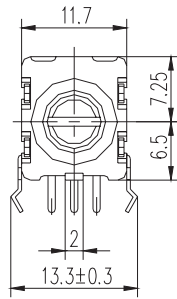
SUGGESTED FILTER



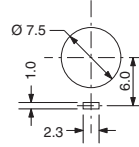
R1, R2, R3, R4 = 10kΩ
C1, C2 = 0.01μF

MECHANICAL DRAWING (horizontal)

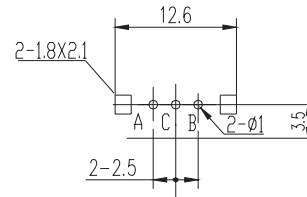
ACZ11NBRXE



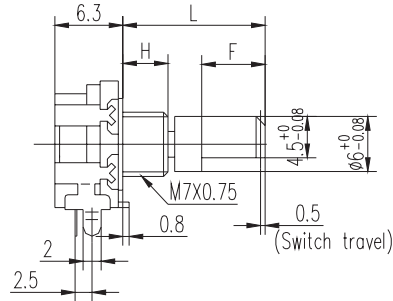
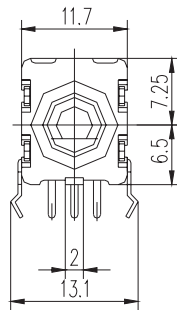
PANEL CUT-OUT



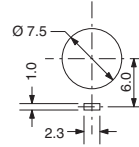
PCB LAYOUT



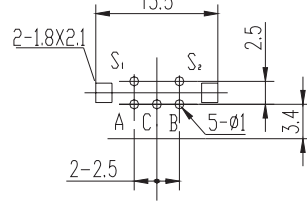
ACZ11BRXE



PANEL CUT-OUT

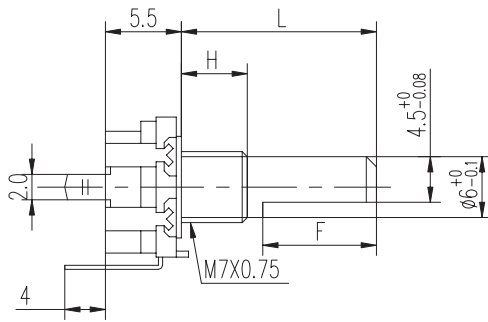
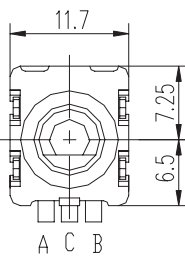


PCB LAYOUT

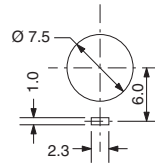


MECHANICAL DRAWING (vertical)

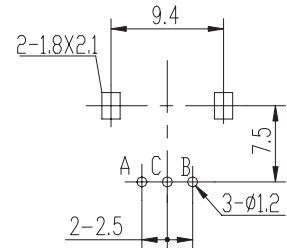
ACZ11NBRXE



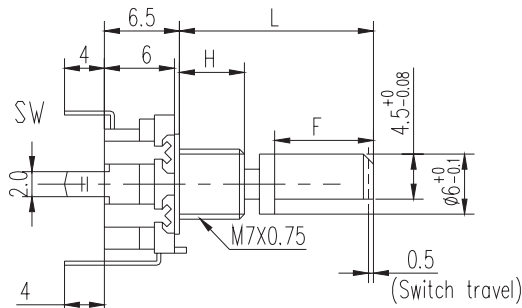
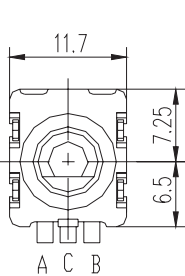
PANEL CUT-OUT



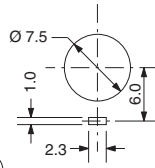
PCB LAYOUT



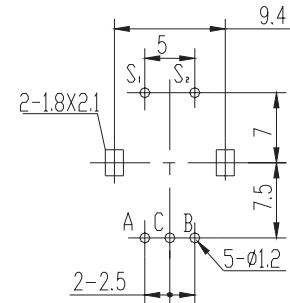
ACZ11BRXE



PANEL CUT-OUT



PCB LAYOUT



REVISION HISTORY

| rev. | description | date |
|------|-------------------|------------|
| 1.0 | initial release | 10/30/2009 |
| 1.01 | brand update | 10/04/2019 |
| 1.02 | updated datasheet | 06/15/2020 |

The revision history provided is for informational purposes only and is believed to be accurate.

CUI DEVICES

CUI Devices offers a one (1) year limited warranty. Complete warranty information is listed on our website.

CUI Devices reserves the right to make changes to the product at any time without notice. Information provided by CUI Devices is believed to be accurate and reliable. However, no responsibility is assumed by CUI Devices for its use, nor for any infringements of patents or other rights of third parties which may result from its use.

CUI Devices products are not authorized or warranted for use as critical components in equipment that requires an extremely high level of reliability. A critical component is any component of a life support device or system whose failure to perform can be reasonably expected to cause the failure of the life support device or system, or to affect its safety or effectiveness.

Mouser Electronics

Authorized Distributor

Click to View Pricing, Inventory, Delivery & Lifecycle Information:

CUI Devices:

[ACZ11BR1E-15FD1-20C](#) [ACZ11BR1E-15FD1-12C](#) [ACZ11BR1E-20KQD1-20C](#) [ACZ11BR1E-15FA1-12C](#)
[ACZ11BR1E-15KQD1-12C](#) [ACZ11BR1E-15KQD1-20C](#) [ACZ11BR1E-20FD1-20C](#) [ACZ11BR1E-20FD1-12C](#)
[ACZ11BR1E-20KQD1-12C](#) [ACZ11BR1E-20FA1-12C](#) [ACZ11BR1E-20FA1-20C](#) [ACZ11BR1E-15FA1-20C](#)
[ACZ11BR1E-15KQA1-12C](#) [ACZ11BR1E-15KQA1-20C](#) [ACZ11BR1E-20KQA1-12C](#) [ACZ11BR1E-20KQA1-20C](#)
[ACZ11BR4E-15FA1-12C](#) [ACZ11BR4E-15FA1-20C](#) [ACZ11BR4E-20FD1-12C](#) [ACZ11BR4E-20FD1-20C](#) [ACZ11BR4E-20KQD1-12C](#) [ACZ11BR4E-20KQD1-20C](#) [ACZ11BR4E-15FD1-12C](#) [ACZ11BR4E-15FD1-20C](#) [ACZ11BR4E-15KQD1-12C](#) [ACZ11BR4E-15KQD1-20C](#) [ACZ11BR4E-20FA1-12C](#) [ACZ11BR4E-20FA1-20C](#) [ACZ11BR4E-15KQA1-20C](#)
[ACZ11BR4E-15KQA1-12C](#) [ACZ11BR4E-20KQA1-12C](#) [ACZ11BR4E-20KQA1-20C](#)