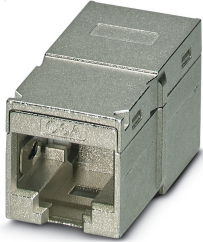


RJ45 coupling - CUC-I-D1ZNI-S/R4GC8 - 1041760

Please be informed that the data shown in this PDF Document is generated from our Online Catalog. Please find the complete data in the user's documentation. Our General Terms of Use for Downloads are valid (<http://phoenixcontact.com/download>)



RJ45 coupling, degree of protection: IP20, number of positions: 8, 10 Gbps, CAT6_A, material: Zinc die-cast, connection method: 2x RJ45, Adapter-free design

Your advantages

- ✓ Assembly without special tools
- ✓ Compact design
- ✓ Rugged design
- ✓ 10 Gbps
- ✓ CAT6_A in accordance with ISO/IEC 11801
- ✓ 360° shielding
- ✓ Adapter-less integration of module inserts



Key Commercial Data

Packing unit	1 pc
GTIN	 4 055626 599915
GTIN	4055626599915
Weight per Piece (excluding packing)	20.000 g
Custom tariff number	85366990
Country of origin	Poland

Technical data

Mechanical characteristics

Connection method	2x RJ45
Number of slots	2
Weight	14.3 g

RJ45 coupling - CUC-I-D1ZNI-S/R4GC8 - 1041760

Technical data

Ambient conditions

Ambient temperature (operation)	-10 °C ... 60 °C
Degree of protection	IP20

Material data

Contact surface material	Gold over nickel
Contact material	Spring steel
Housing material	Zinc die-cast
Housing surface material	metal-plated
Mounting type	Snap in

Electrical characteristics

Number of positions	8
GRP transmission properties	CAT6 _A In accordance with ISO/IEC 11801
Transmission speed	10 Gbps
Frequency range	500 MHz
Dielectric strength	> 1000 V DC
Contact resistance	200 mΩ (Trunk in to trunk out)
Rated voltage (III/3)	72 V (DC)

Standards and Regulations

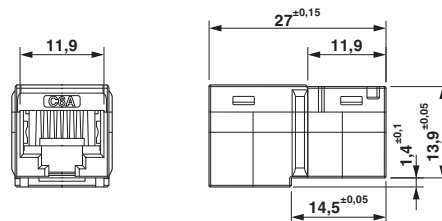
Standards/specifications	IEC 60603-7 DIN EN 50173-1 ISO/IEC 11801-Am.1 IEC 60068-2
--------------------------	---

Environmental Product Compliance

China RoHS	Environmentally friendly use period: unlimited = EFUP-e
	No hazardous substances above threshold values

Drawings

Dimensional drawing



Classifications

eCl@ss

eCl@ss 10.0.1	19179290
---------------	----------

RJ45 coupling - CUC-I-D1ZNI-S/R4GC8 - 1041760

Classifications

eCl@ss

eCl@ss 11.0	19179090
eCl@ss 9.0	19179290

ETIM

ETIM 6.0	EC000310
ETIM 7.0	EC000310

Approvals

Approvals

Approvals

EAC / UL Recognized / cUL Recognized / cULus Recognized

Ex Approvals

Approval details

EAC		B.01687
-----	--	---------

UL Recognized		http://database.ul.com/cgi-bin/XYV/template/LISEXT/1FRAME/index.htm	FILE E 335024
---------------	--	---	---------------

cUL Recognized		http://database.ul.com/cgi-bin/XYV/template/LISEXT/1FRAME/index.htm	FILE E 335024
----------------	--	---	---------------

cULus Recognized	
------------------	--

Accessories

Accessories

Data plug

RJ45 coupling - CUC-I-D1ZNI-S/R4GC8 - 1041760

Accessories

RJ45 connector - VS-08-RJ45-10G/Q - 1419001



RJ45 connector, IP20, CAT6_A, 8-pos., with QUICKON fast connection technology, for 26 ... 24 AWG 1-wire and 7-wire conductors, color: black

Patch panel

DIN rail adapter - NBC-PP-G1PGY - 1041740



DIN rail adapter, type: Headers with shielding, degree of protection: IP20, material: PC-GF10, without assembled modules

Marshalling panel - CUC-PP-FR19:1U-I-EMPTY:24 - 1422978

Patch bay, 19" mounting, IP20, with 24 slots selectively for RJ45 cable connection modules, RJ45 coupling modules, LC duplex, SC simplex and MPO, medium gray



Marshalling panel - CUC-PP-FR19:1U-I-EMPTY:24 BK - 1422979

Marshalling panel, type: RJ45, degree of protection: IP20, material: PC-GF, connection method: Quick connection, size of housing: 1, color: black

