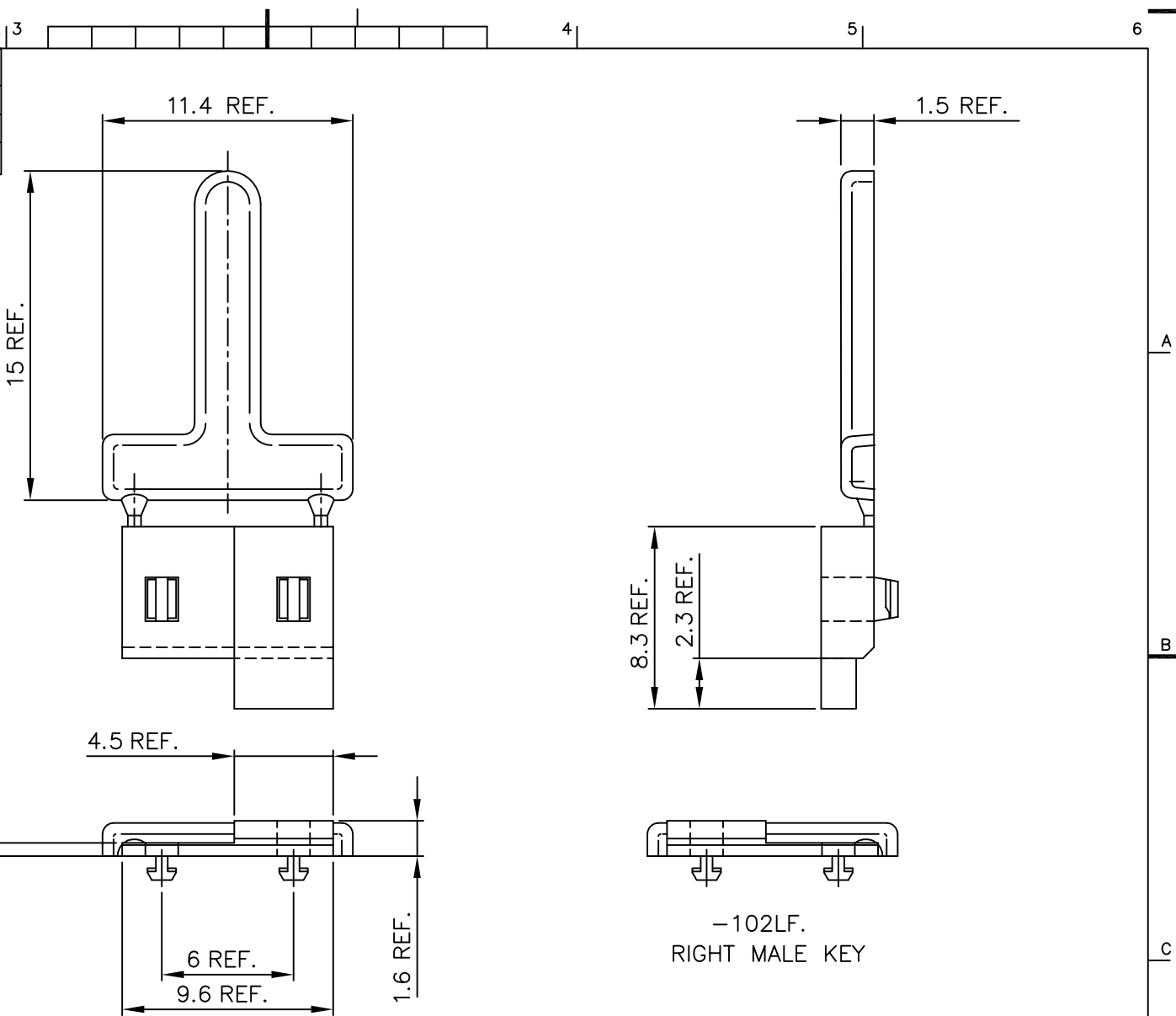


Tous droits strictement réservés. Reproduction ou communication à des tiers interdite sous quelque forme que ce soit sans autorisation écrite du propriétaire. © FCI b.v.



Reproduction or issue to third parties in any form, whatever is not permitted without written authority from the proprietor. © FCI b.v.

PRODUCT NUMBER	DESCRIPTION	COLOR
85813-101LF	LEFT MALE KEY	BLUE
85813-102LF	RIGHT MALE KEY	PINK
85813-103LF	MIDDLE MALE KEY	BROWN



NOTES:

- MATERIAL: LIQUID CRYSTAL POLYMER. FLAME RETARDANT ACC. UL 94-V0 30% GLASS FILLED, COLOR NATURAL.
- THIS PRODUCT WITH "LF" SUFFIX MEETS EUROPEAN UNION DIRECTIVES AND OTHER COUNTRY REGULATIONS AS DESCRIBED IN GS -22-008.
- THE PRODUCT IS NOT INTENDED TO BE EXPOSED TO A MANUFACTURING SOLDER PROCESS.

mat'l. code		tolerances unless otherwise specified			CUSTOMER COPY		ELECTRONICS www.fciconnect.com		
ltr	ecn no	dr	date	linear	projection	title			
A	H40101	VWO	940211			MALE KEY HALF, EXTENDED			
B	H40259	VWO	940420	angles		product family			
C	H40487	DDB	940729			CENTRAL (tm)			
D	H50073	RVI	950201	dr	H v Woensel	940211	code	213	
E	H50391	DAN	950705	eng	H v Woensel	940211	sheet	1 of 1	
F	0605-0392	CLu	051017	chr	H Cooijmans	940211	scale	5:1	
sheet index		revision	F	app		H v Woensel	940211	A3 85813	
sheet		1							

Mouser Electronics

Authorized Distributor

Click to View Pricing, Inventory, Delivery & Lifecycle Information:

[FCI / Amphenol:](#)

[85813-102LF](#) [85813-101LF](#) [85813-103LF](#)