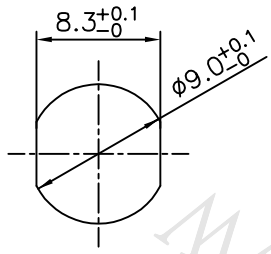
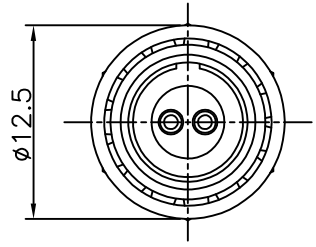
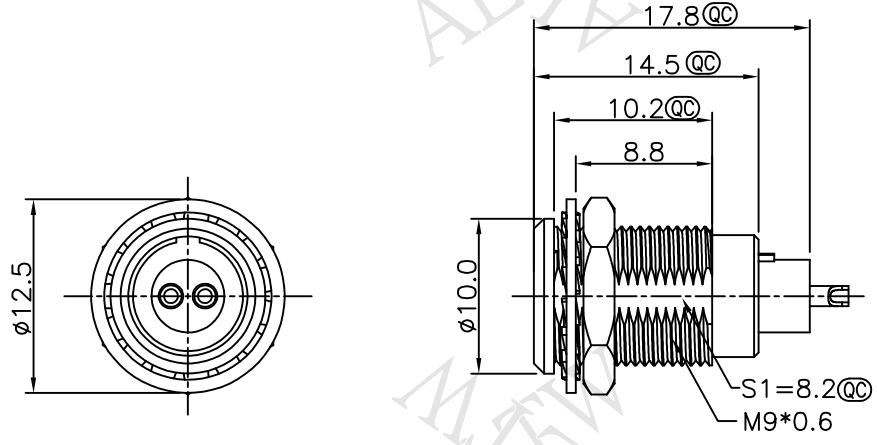
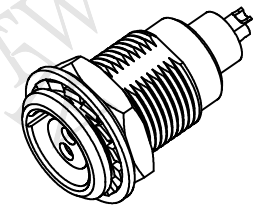
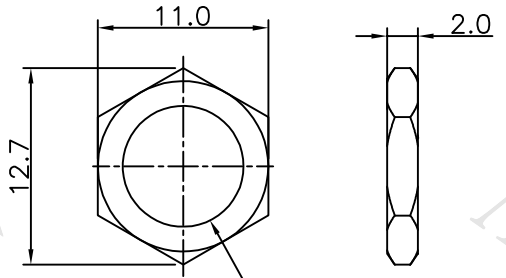


REV.	DESCRIPTION
01	New Initial.

THIS DOCUMENT IS SUBJECT TO CHANGE WITHOUT NOTICE. IT IS CONFIDENTIAL AND A PROPERTY OF Amphenol LTW. DISCLOSURE TO THIRD PARTY HAS TO BE AUTHORIZED BY Amphenol LTW.



Conn.  
Pin Assignments  
Front View



NUT

M9\*0.6

- Notes:
- \* @C Important Dimensions To Check.
  - \* Female Pin: Copper Alloy, Gold Plated.
  - \* Use Panel Thickness Max: 6.0mm

UNIT:mm TOLERANCE ±0.5MM	TITLE FLO 0B PANEL CONNECTOR		<b>Amphenol LTW</b> 安費諾亮泰企業股份有限公司	ITEM NO FLBB-XXEGFS-XCP-XXX	DRAWN BY Ouyang	DATE 2018/09/06
	SCALE Free	SHEET 1 OF 2		DWG NO FLBB-XXEGFS-XCP-XXX	CHECKED BY Mafei	DATE 2018/09/06
REV. 01	SIZE A4	@C :Inspection Item	CUSTOMER ALTW	APPROVED BY Jerry	DATE 2018/09/06	

THIS DOCUMENT IS SUBJECT TO CHANGE WITHOUT NOTICE. IT IS CONFIDENTIAL AND A PROPERTY OF Amphenol LTW. DISCLOSURE TO THIRD PARTY HAS TO BE AUTHORIZED BY Amphenol LTW.

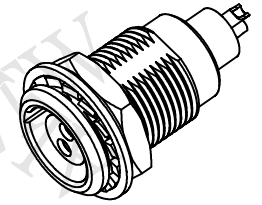
FLBB-XXEGFS-XCP-XXX

SERIAL NO.



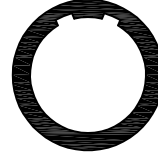
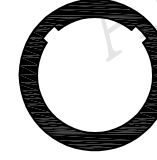

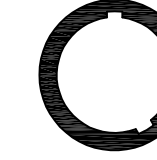
KEY POINT ①

PIN CONFIGURATION ②

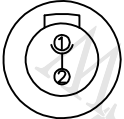
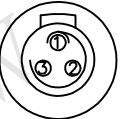
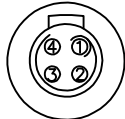




SIZE(CONNECTOR)

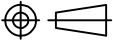


KEY POINT ①

CODE	G	A	B	C	J	F
GRAPHIC	0° 	30° 	60° 	90° 	45° 	155° 

PIN CONFIGURATION (Solder Definition) ②

GRAPHIC	 2 PIN	 3 PIN	 4 PIN	 5 PIN	 6 PIN	 7 PIN	 9 PIN
---------	--	--	--	---	--	--	--

UNIT:mm	
TOLERANCE	
±0.5MM	

TITLE FLO 0B PANEL CONNECTOR			
SCALE Free	SHEET 2 OF 2		
REV. 01	SIZE A4	© :Inspection Item	

**Amphenol LTW**  
安費諾亮泰企業股份有限公司

ITEM NO FLBB-XXEGFS-XCP-XXX	DRAWN BY Ouyang
DWG NO FLBB-XXEGFS-XCP-XXX	CHECKED BY Mafei
CUSTOMER ALTW	APPROVED BY Jerry

DATE 2018/09/06
DATE 2018/09/06
DATE 2018/09/06

# Mouser Electronics

Authorized Distributor

Click to View Pricing, Inventory, Delivery & Lifecycle Information:

[Amphenol:](#)

[FLBB-04EGFS-GCP-001](#) [FLBB-09EGFS-GCP-001](#) [FLBB-07EGFS-GCP-001](#)