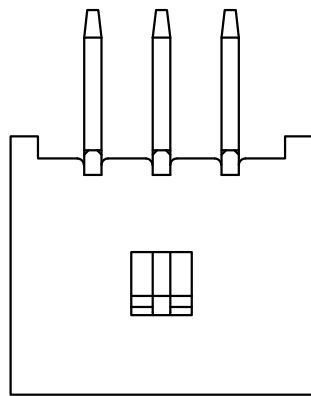
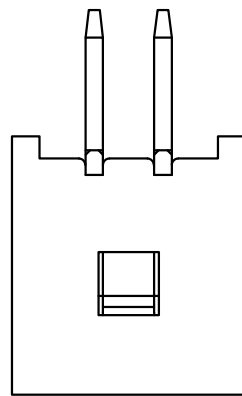


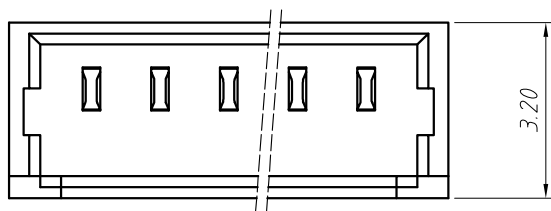
4P-25P



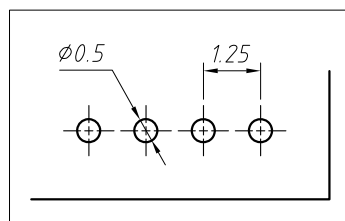
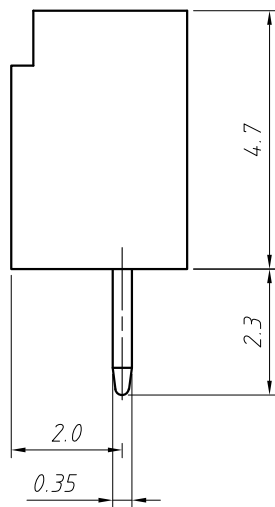
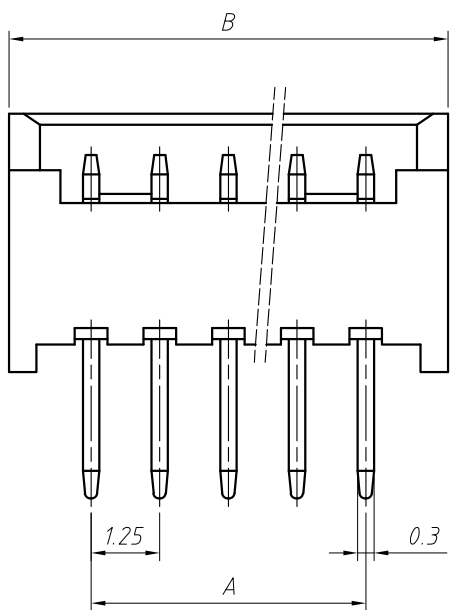
3P



2P



3.20



PCB LAYOUT

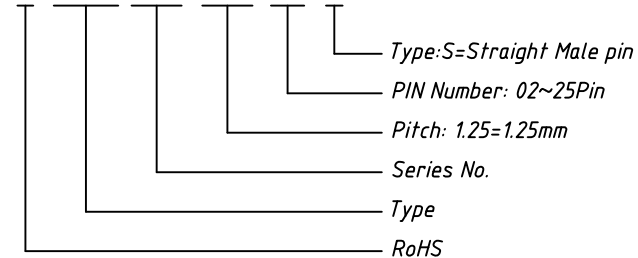
Circuit	Dimensions(mm)	
	A	B
02	1.25	4.25
03	2.50	5.50
04	3.75	6.75
05	5.00	8.00
06	6.25	9.25
07	7.50	10.50
08	8.75	11.75
09	10.00	13.00
10	11.25	14.25
11	12.50	15.50
12	13.75	16.75
13	15.00	18.00
14	16.25	19.25
15	17.50	20.50
16	18.75	21.75
--	---	---
25	30.00	33.00

Material:
Housing: PA66(UL94V-0/V-2), White
Contacts: Phosphor Bronze, Tin Plated

- Electrical Characteristics:**
1. Poles: 2 to 25P
 2. Current rating: 1.0A
 3. Voltage rating: 125V
 4. Temperature range: -25°C to +85°C
 5. Contact resistance: ≤20mΩ
 6. Insulation resistance: ≥100MΩ
 7. Withstand voltage: 500V AC/minute
 8. Applicable wire: AWG #32 to #28
 9. Applicable PC board thickness: 0.8mm

Order Information

L-KLS1-XL1-1.25-XX-S



GENERAL TOLERANCE	PROJECTION		Description:
X. ±0.50	UNITS	mm	1.25mm ZH Type Wire To Board Connector
.X ±0.25	SCALE	1:1	
.XX ±0.10	Draw by:	Jenny	
ANGLE TOLERANCE	Check by:		KLS P/N: L-KLS1-XL1-1.25-XX-S
X. ±5°	Date	2018-03-01	NingBo KLS ELECTRONIC CO.,L TD.
.X ±3°	SHEET	1 OF 1	
.XX ±2°			