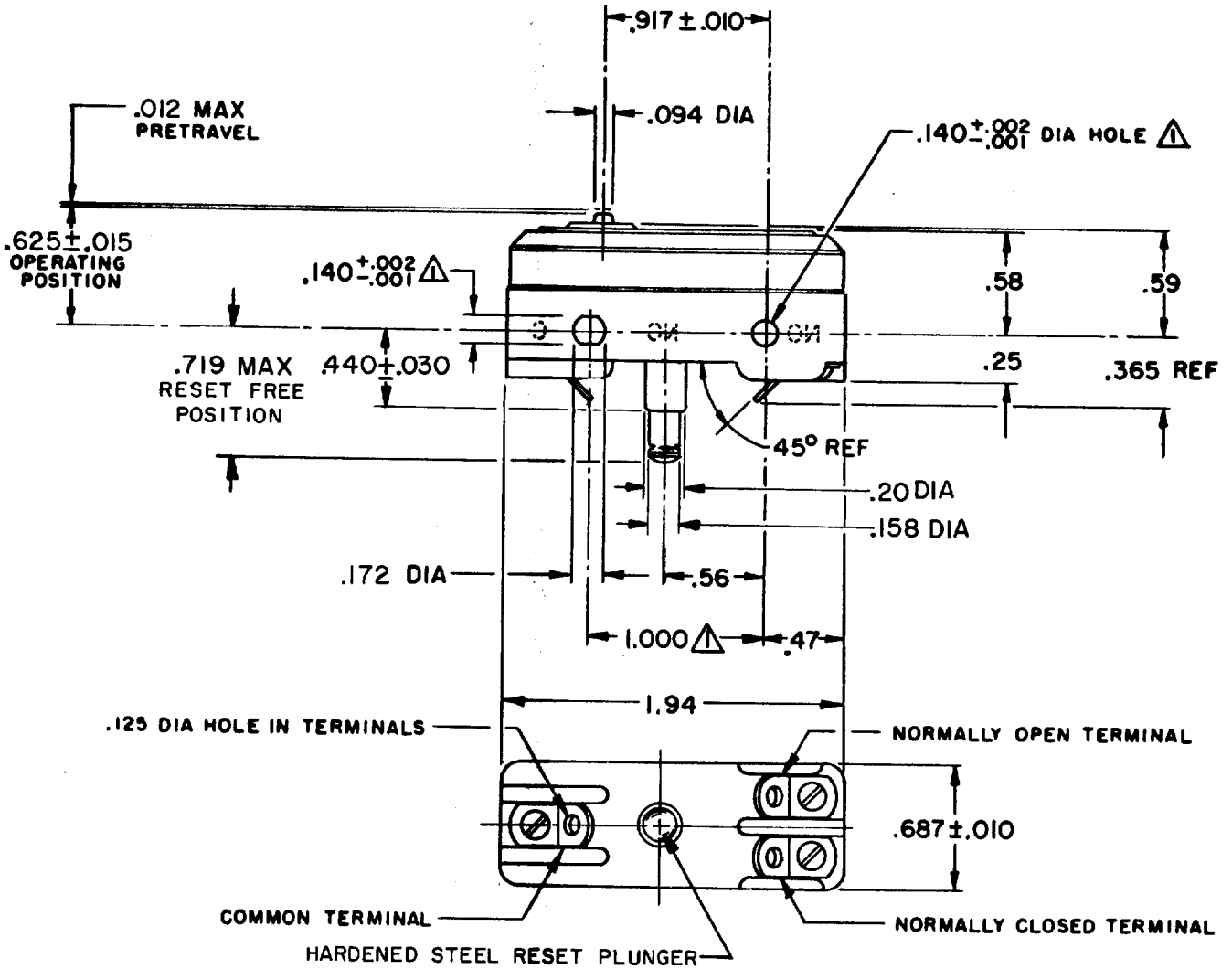


**MICRO SWITCH**FREEPORT, ILLINOIS, U. S. A.  
A DIVISION OF HONEYWELL

FED. MFG. CODE 91929

**SWITCH - BASIC**

CATALOG LISTING

**BZ-RX243****NOTE -**

- 1 - MOUNTING HOLES WILL ACCEPT PINS OR SCREWS OF .139 MAX DIA ON 1.000 ± .002 CENTERS
- 2 - SWITCH WILL WITHSTAND TEMPERATURE OF 250°F
- 3 - "NO", "NC" & "C" STAMPED ON RIGHT SIDE OF SWITCH

THIS DRAWING COVERS A PROPRIETARY ITEM AND IS THE PROPERTY OF MICRO SWITCH, A DIVISION OF MINNEAPOLIS-HONEYWELL REGULATOR CO. THIS DRAWING IS NOT TO BE COPIED OR USED WITHOUT THE APPROVAL OF MICRO SWITCH.

**CHARACTERISTICS**

OPERATING FORCE - - - - - 7-9 OZ  
 OVERTRAVEL - - - - - .005 MIN

**RESET CHARACTERISTICS**

OPERATING FORCE - - - - - 2-9 OZ

**ELECTRICAL DATA**

CONTACT ARRANGEMENT  
 SINGLE POLE DOUBLE THROW MAINTAINED CONTACT

UNDERWRITERS' LAB. INC. LISTED RATING  
 15 A - 125, 250, OR 480 VAC  
 1/4 HP - 125 VAC; 1/2 HP - 250 VAC  
 1/2 A - 125 VDC; 1/4 A - 250 VDC

**SCALE FULL****DO NOT SCALE PRINT****UNLESS OTHERWISE NOTED**

DIMENSIONS ARE IN INCHES

**TOLERANCES ARE:**

ONE PLACE (.0) ± .030  
 TWO PLACE (.00) ± .015  
 THREE PLACE (.000) ± .005  
 ANGLES ±

**WEIGHT .055 LB**

-L310-

**M BZ-RX243**

DRAWING NUMBER

ISSUE

45

PSR

12SEP07

CHECK

10 APR 69

REVISIONS

A PR 610

RER 10 APR 69

B CO27289

LSD 27 MAY 70

C CO-34859

JAL 13 FEB 75

D 0033747

MST 12SEP07

CHECK

10 APR 69

CHECK

DAW

APR 69

CHECK

APR 69

DRAWN

D-50378-004

RASTER

3-50378-004

REPLACES

RELEASE NO. PR-610

12SEP07

CHECK

10 APR 69

CHECK

10 APR 69

CHECK

APR 69

DRAWN

RASTER