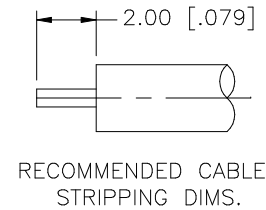
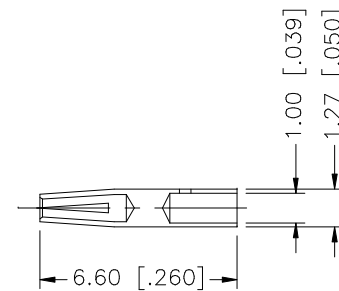
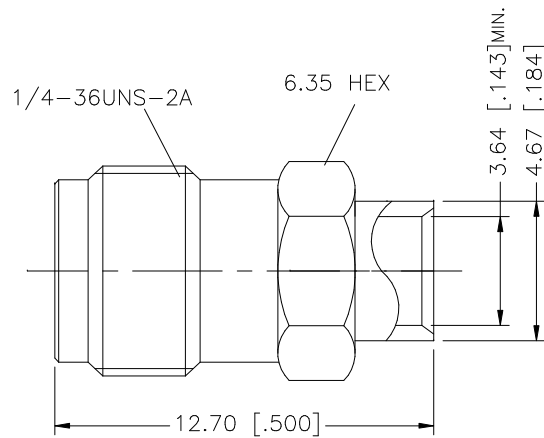


REV.	DATE	DESCRIPTION
NC	04/31/03	INITIAL RELEASE
A	10/27/05	MODIFY - INSULATOR NOW INTERNAL



					<div>UNLESS OTHERWISE SPECIFIED DIMENSIONS ARE IN MILLIMETERS. DIMENSIONS IN [ ] ARE IN INCHES AND FOR CUSTOMER REFERENCE ONLY.</div> <div>UNLESS OTHERWISE SPECIFIED TOLERANCES FOR MILLIMETERS ARE: 0.5 – 8mm ± 0.20mm 8 – 30mm ± 0.40mm 30 – 120mm ± 0.50mm</div> <div>UNLESS OTHERWISE SPECIFIED TOLERANCES FOR INCHES ARE: .020 – .315 = ± 0.007" .315 – 1.180 = ± 0.015" 1.180 – 4.724 = ± 0.020"</div> <div>DO NOT SCALE DRAWING</div>	APPROVALS	DATE	<div>Amphenol Connex</div> <div>PART DESCRIPTION</div> <div>SMA DIRECT SOLDER JACK (FOR .141” SEMI–RIGID CABLE)</div> <div>PART NO.</div> <div>132104</div> <div>DWG. NO.132104.DWG</div> <div>REV. A</div> <div>SIZE A</div> <div>SCALE NA</div>					
8						DRAWN	G.R.S.						10/27/05
7						CHECKED							
6						ISSUED							
5						SHEET	1 OF 1						
4													
3	CONTACT PIN	BER. COPPER	GOLD	1									
2	INSULATOR	TEFLON	NATURAL	1									
1	BODY	BRASS	GOLD	1									
	DESCRIPTION	MATERIAL	FINISH	QTY									

# Mouser Electronics

Authorized Distributor

Click to View Pricing, Inventory, Delivery & Lifecycle Information:

[Amphenol:](#)

[132104](#)