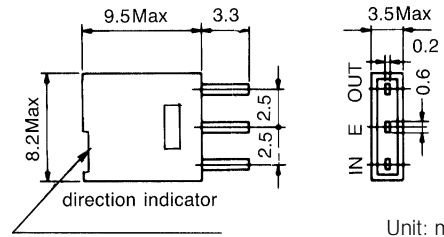
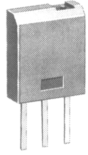


## TYPE CFM2, CFM3 (CERASIZER®)



### Description

- Compact 2/3 element AM IF filter with unique structure for high reliability.
- Center frequency range: 450 to 470kHz
- Bandwidth at 6dB: 4 to 12kHz. (4~8kHz: CFM3)

### Features

- Compact, low profile
- High selectivity, suited to a wide range of applications
- Low temperature coefficient
- Low spurious response

### Applications

- AM radio cassettes, stereo sets, telecommunications
- CB transceivers

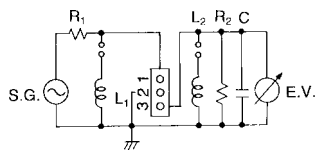
## STANDARD FILTERS SELECTION GUIDE

### TYPE CFM2/CFM3

TOKO Part Number	Center Frequency (Fo)* (kHz)	Bandwidth at 6dB (kHz)	Selectivity at Fo±9kHz (dB)	Ripple in Pass Band (dB)	Insertion Loss (dB)	Input/Output Impedance (kΩ)
<b>CFM2</b>						
AHCFM2-450Z	450±1.0	4.0±1.0	24.0 min.	1.0 max.	7.0 max.	1.0/1.5
AHCFM2-450AL	450±1.0	4.0 min.	18.0 min.	1.0 max.	6.0 max.	1.0/1.5
AHCFM2-450BL	450±1.0	6.0 min.	16.0 min.	1.0 max.	6.0 max.	1.5/2.0
AHCFM2-450CL	450±1.0	8.0 min.	12.0 min.	2.0 max.	6.0 max.	2.0/2.0
AHCFM2-450DL	450±1.0	10.0 min.	9.0 min.	2.0 max.	6.0 max.	2.0/2.0
AHCFM2-450EL	450±1.0	12.0 min.	6.0 min.	2.0 max.	6.0 max.	2.5/2.5
<b>CFM3</b>						
AHCFM3-450AL	450±1.0	4.0 min.	28.0 min.	2.0 max.	6.0 max.	3.0/3.0
AHCFM2-450BL	450±1.0	5.5 min.	24.0 min.	2.0 max.	6.0 max.	3.0/3.0
AHCFM2-450CL	450±1.0	8.0 min.	20.0 min.	2.0 max.	6.0 max.	3.0/3.0

\* Center frequencies 450kHz, 455kHz, 459kHz, 460kHz, 468kHz available. Center frequency tolerance available to ±0.5kHz.

### Test Circuit



### Test Conditions

1. C includes test circuit capacitance. (50pF without L<sub>2</sub>, 62pF with L<sub>2</sub>)
2. • L<sub>1</sub> 2.7mH (CFM2), 1.35mH (CHM3)  
• L<sub>2</sub> 1.0mH
3. During testing, when matching coils are used at input/output sides, connect L<sub>1</sub> and L<sub>2</sub> (dummy)
4. R<sub>1</sub>, R<sub>2</sub>: Input-output impedance  
Cs: Stray capacitance  
(less than 50pF, including EV)