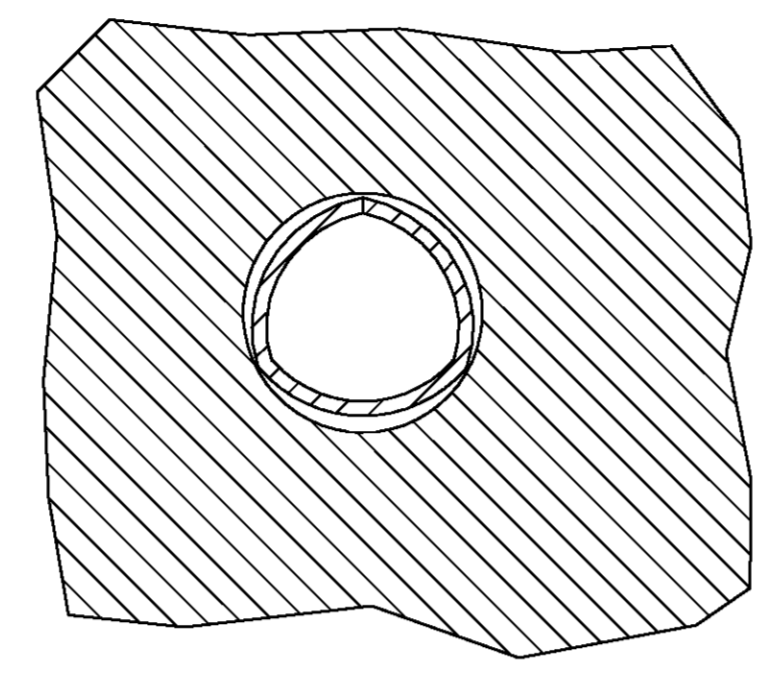
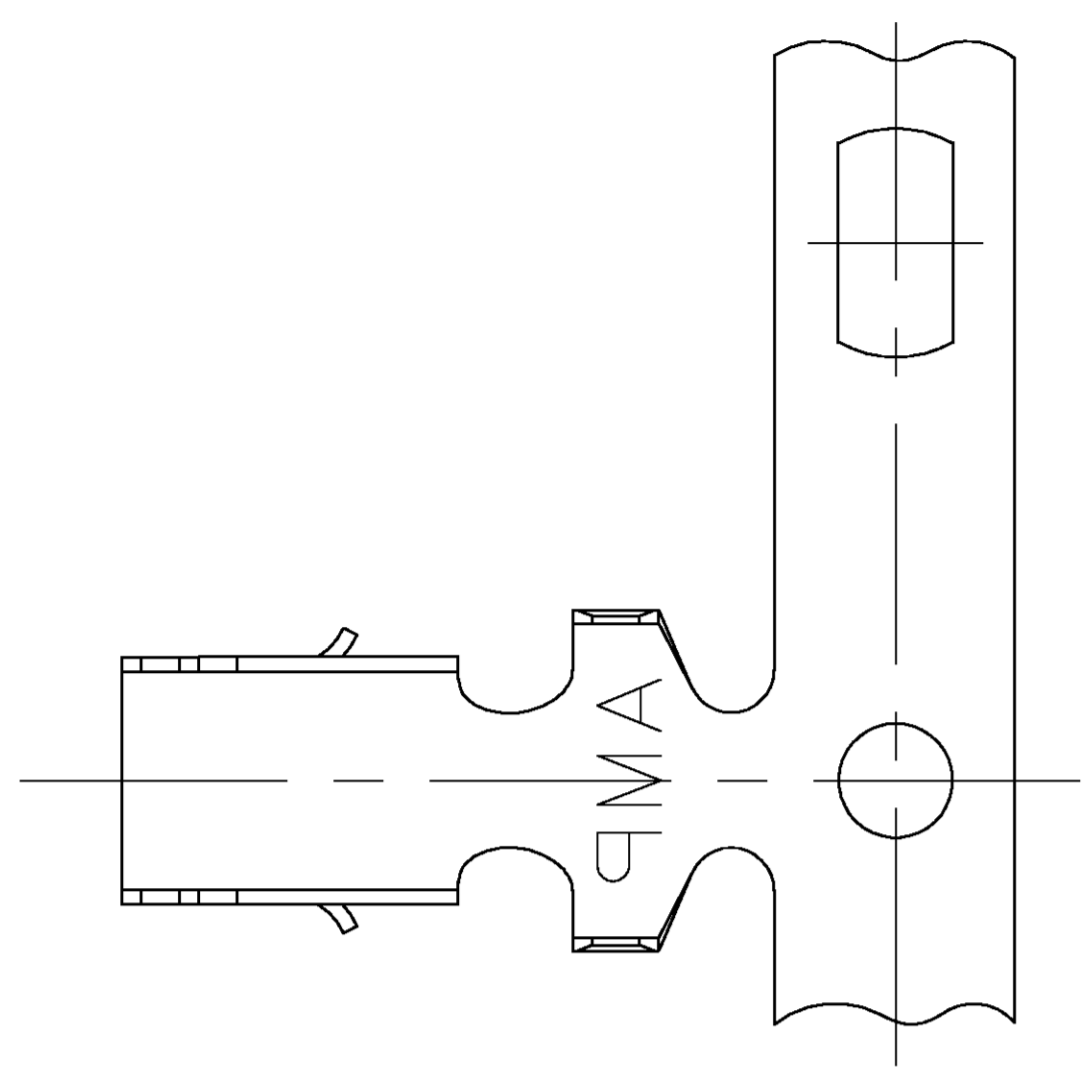
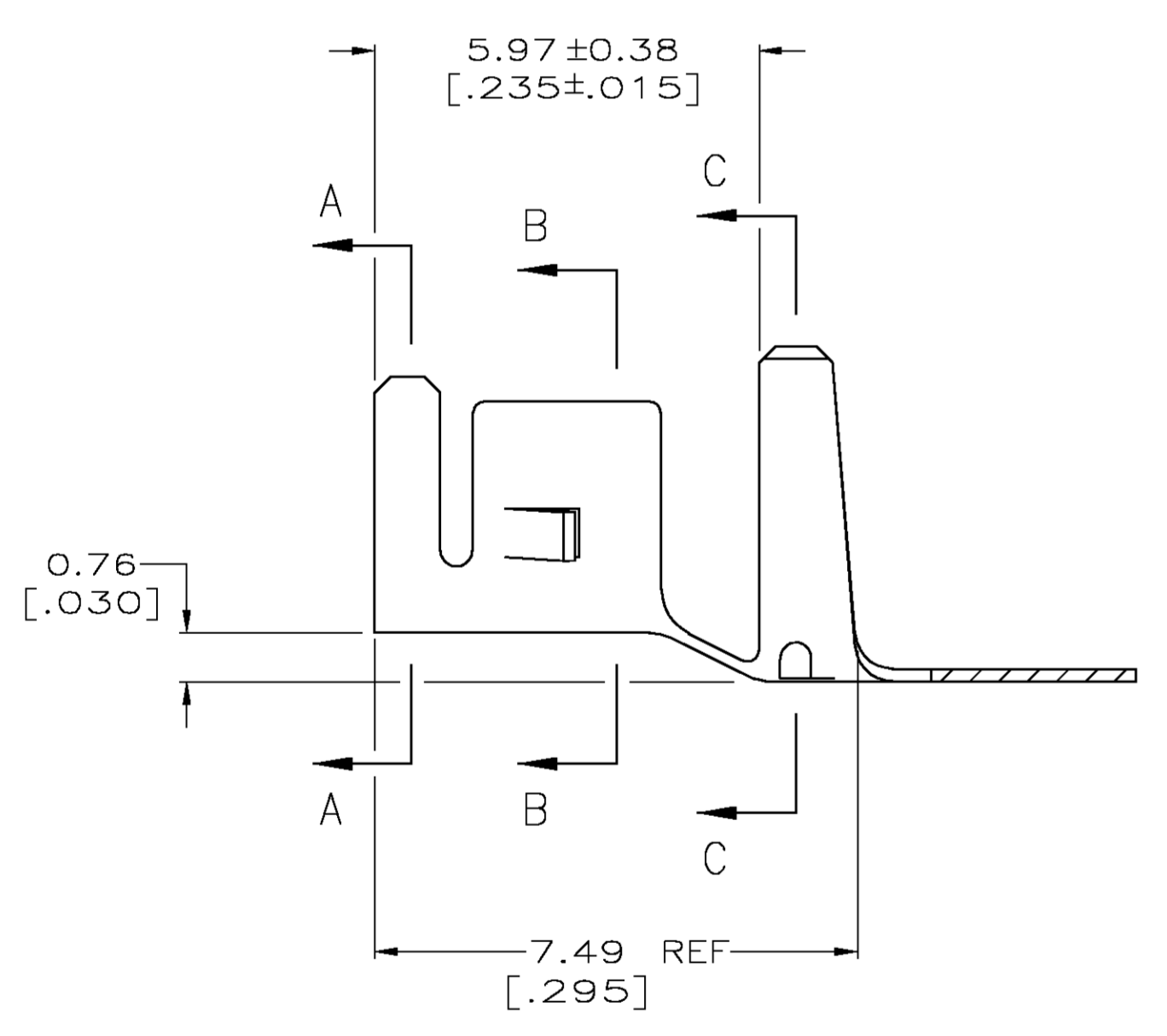


LOC		DIST		REVISIONS				
CM	00	REV	PER	ECN	DESCRIPTION	DATE	DWN	APVD
N				OG3B-0422-03		22AUG03	SC	JE

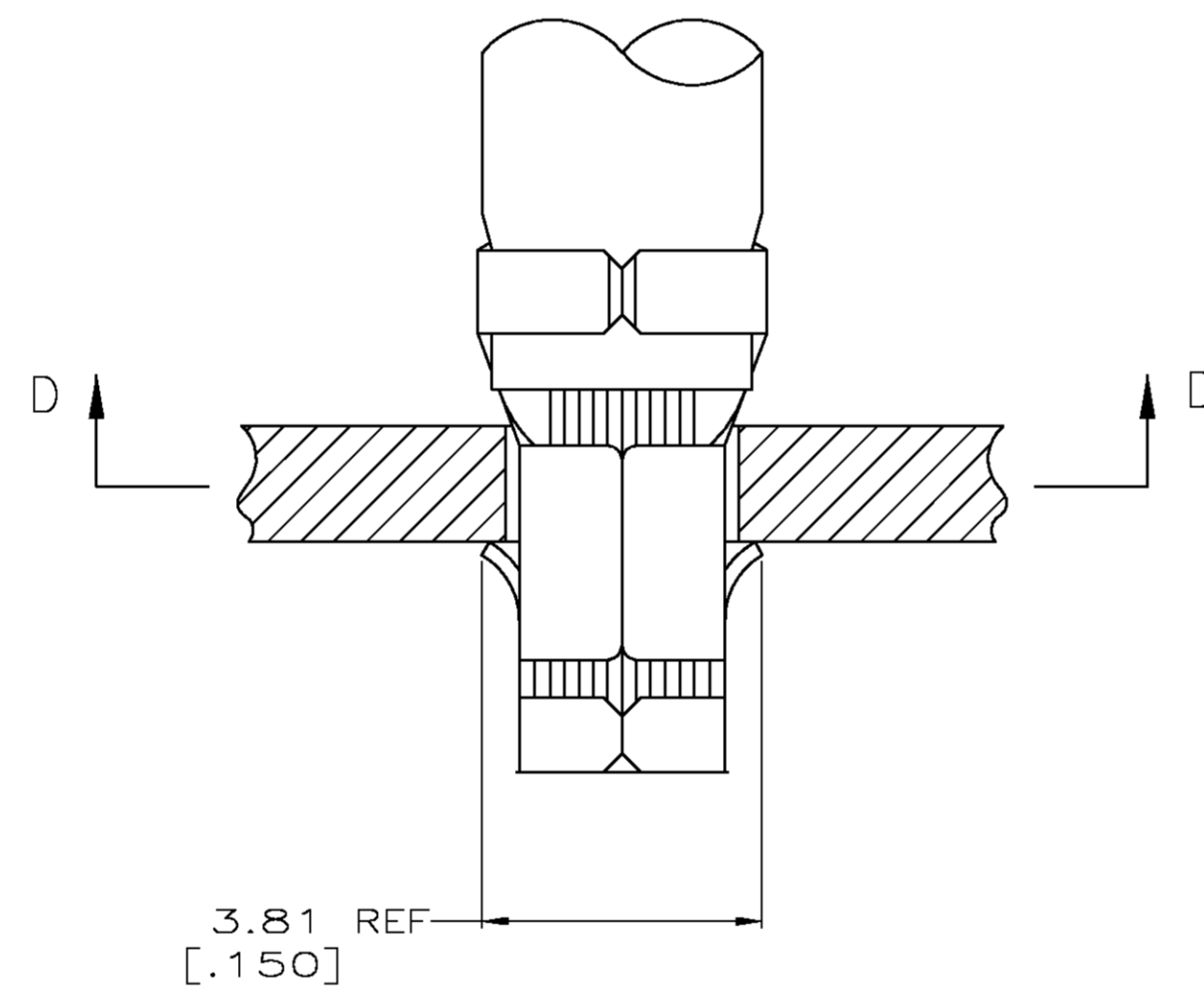


SECTION D-D

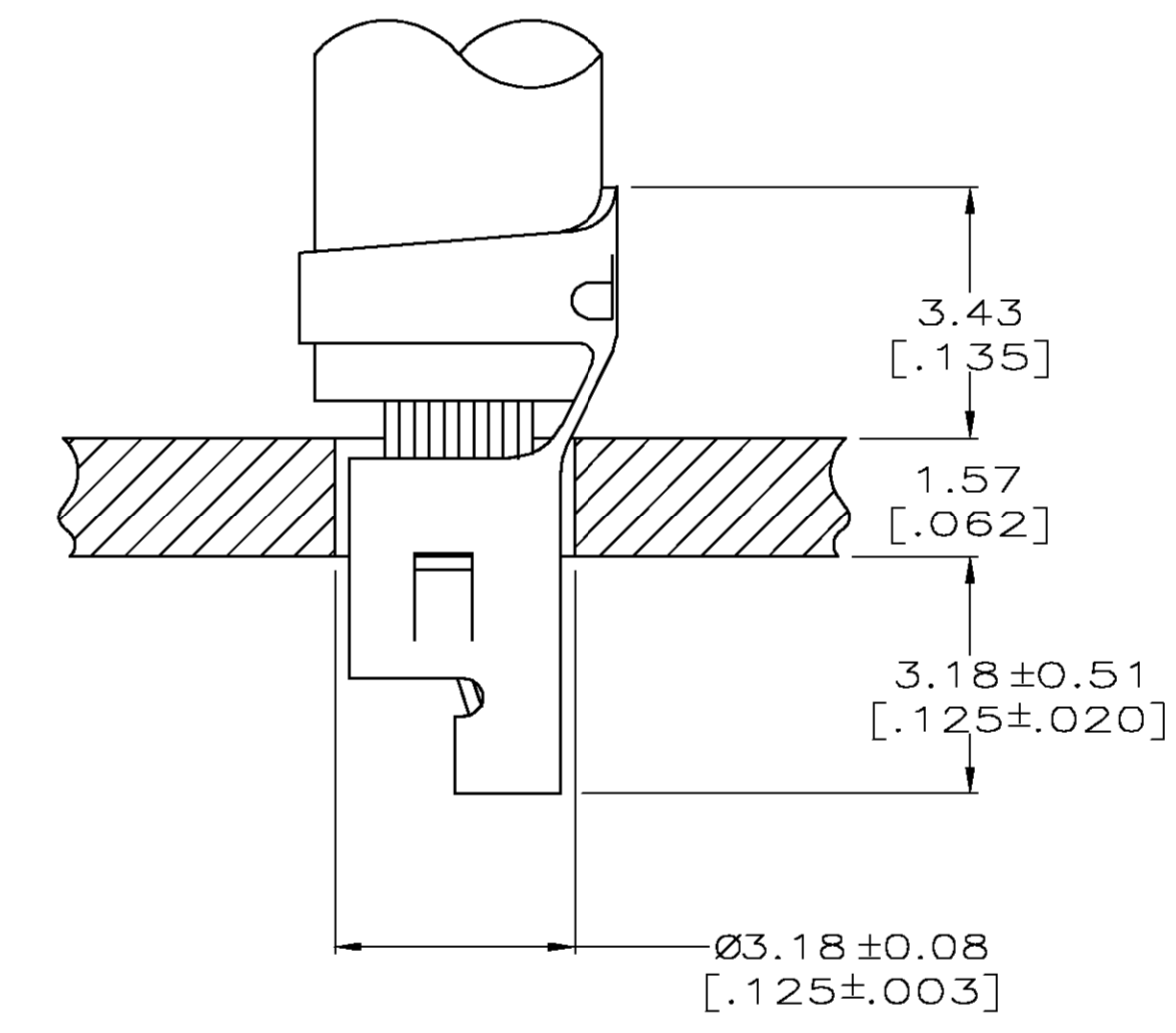
1. PARTS COMPLY WITH AMP SOLDERABILITY SPEC 109-11-3.
2.  $\Delta$  0.00508 [.000200] MIN BRIGHT TIN-LEAD.
3. WIRE RANGE: 0.80 - 2.0 mm<sup>2</sup> [18 - 14 AWG].
4. INSULATION RANGE: 2.29 - 3.81 [.090 - .150] DIA.
5. DIMENSIONS IN BRACKETS ARE IN INCHES.
6.  $\Delta$  0.00508 [.000200] MIN BRIGHT TIN.



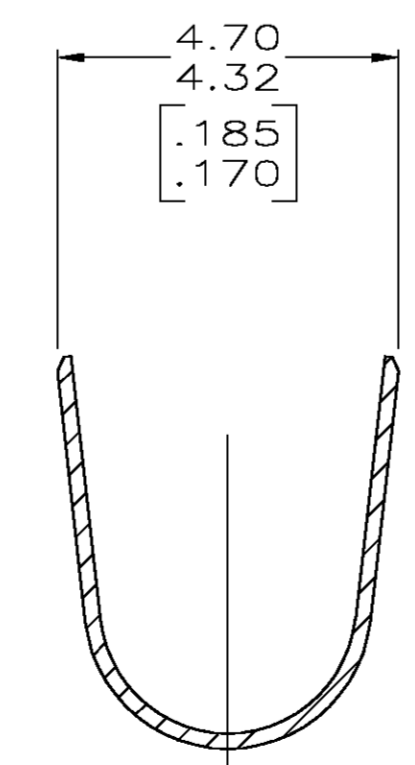
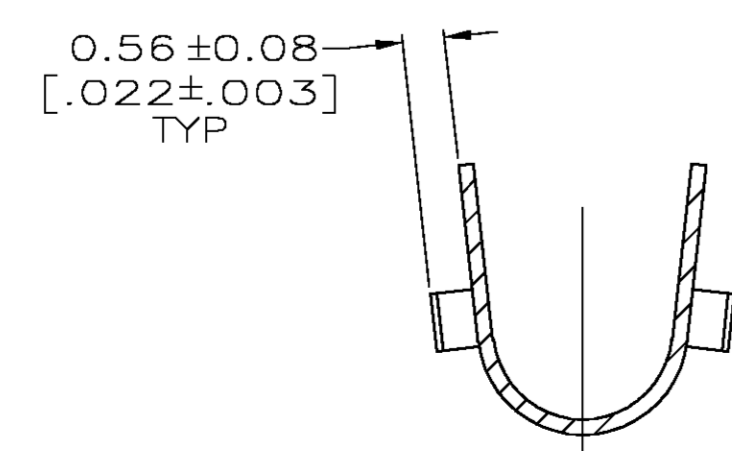
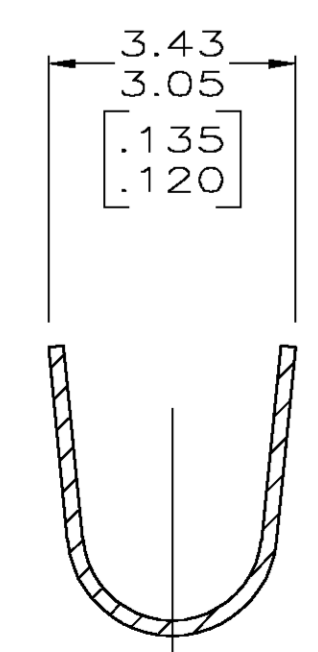
SECTION A-A



SECTION B-B



SECTION C-C



**METRIC**

$\Delta$ 6	3-770060-1
$\Delta$ 2	770060-1
FINISH	PART NO.

THIS DRAWING IS A CONTROLLED DOCUMENT.

DW: S. CARPENTER 22AUG2003	Tyco Electronics Corporation Harrisburg, PA 17105
CHK: J. ELLIS 22AUG2003	
APVD: J. ELLIS 22AUG2003	NAME: TERMINAL, AMP-IN™
PRODUCT SPEC	APPLICATION SPEC
SIZE: A1	CAGE CODE: 770060
WEIGHT: -	RESTRICTED TO: -
MATERIAL: 0.198 [.0078] PH BRZ	CUSTOMER DRAWING
FINISH: -	SCALE: 10:1
	SHEET: 1 OF 1
	REV: N