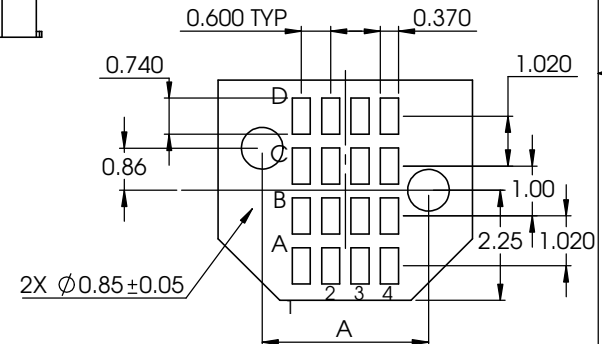
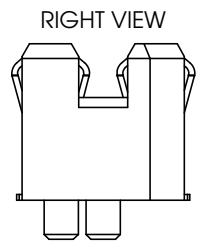
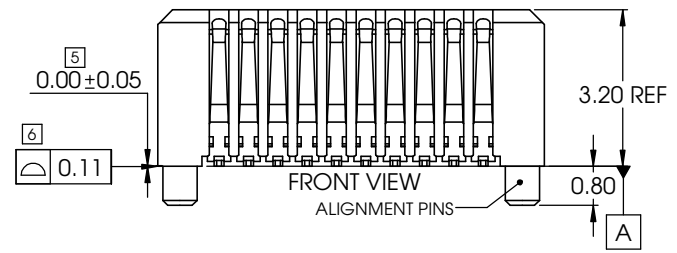
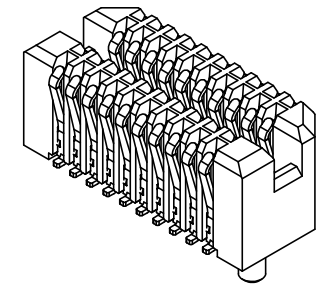
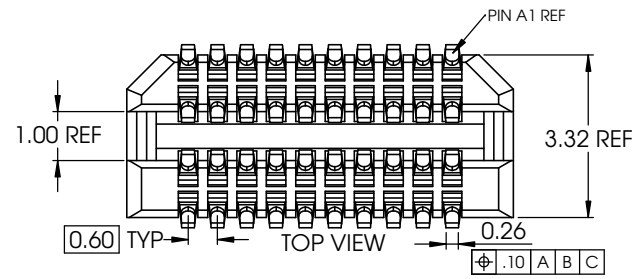


PART NUMBER
SEE TABLE

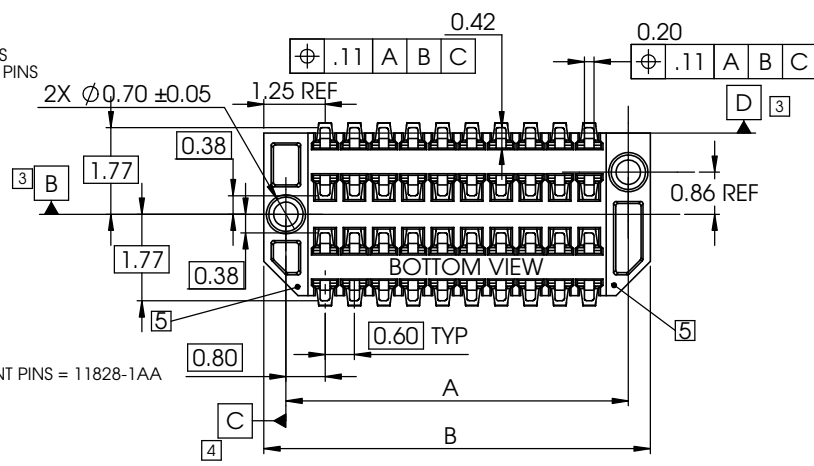
REVISIONS			
REV	DESCRIPTION	DATE	DWN
13	EC-11661 Added Protective Cap Option	10/06/15	AP

- NOTES:
- MATERIAL**  
HOUSING: HIGH TEMPERATURE THERMOPLASTIC  
CONTACT: COPPER ALLOY  
CONTACT PLATING: UNDERPLATE WITH NICKEL,  
HARD GOLD IN MATING AREA  
PURE MATTE TIN ON CONTACT TAIL
  - Please refer to Product Specification for mechanical and electrical specification.
  - Datum B is defined as the plane intersecting the  $\phi 0.70$ mm post and parallel to Datum D
  - Datum C is defined as the plane intersecting the  $\phi 0.70$ mm post and perpendicular to Datum B.
  - This dimension is measured (for each Solder Lead) as the deviation from a best-fit plane created from the surfaces referenced at the ends of the part.
  - This dimension is measured (for each Solder Lead) as the deviation from a best-fit plane created from all the Solder Leads.



- 1: WITH PROTECTIVE CAP  
2: WITH KAPTON TAPE
- 11828-1X X
- A: WITH ALIGNMENT PINS  
B: WITHOUT ALIGNMENT PINS

	NO POS	DIM A	DIM B
A	10	7.00	7.9
B	20	13.00	13.9
C	30	19.00	19.9
D	40	25.00	25.9
E	50	31.00	31.9
F	60	37.00	37.9
G	70	43.00	43.9

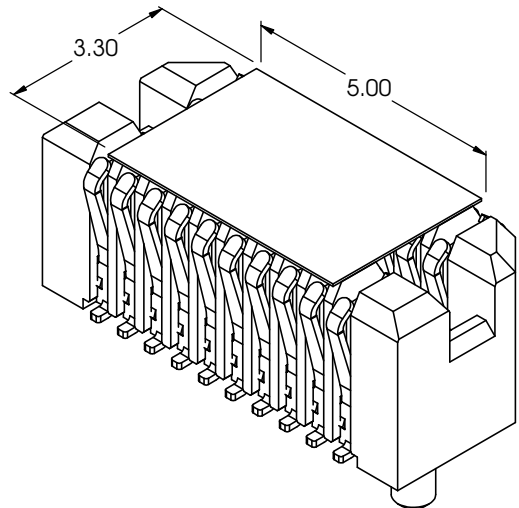
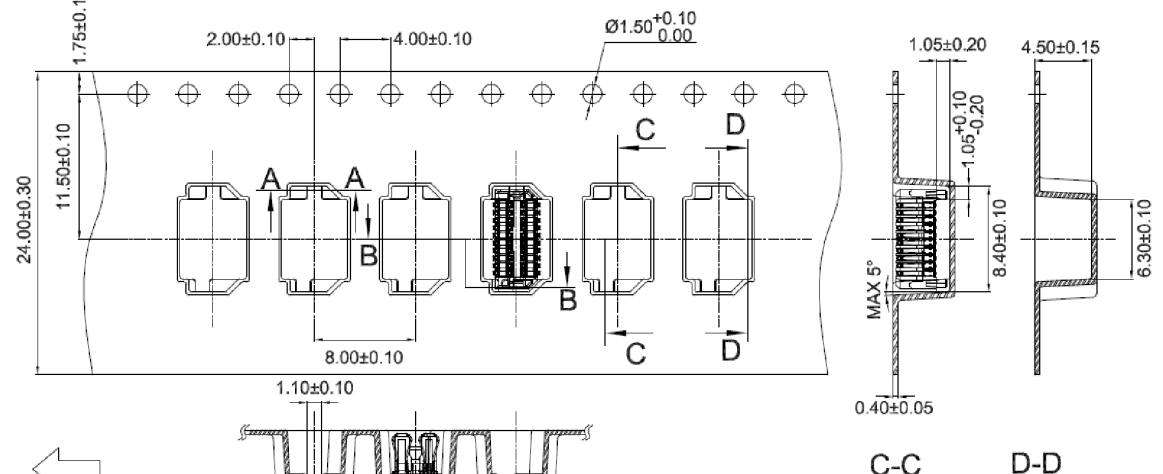


EXAMPLE SHOWN: 10 POSITION, WITH ALIGNMENT PINS = 11828-1AA

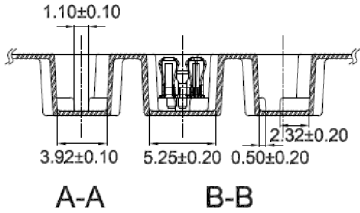


<small>THIS DOCUMENT CONTAINS CONFIDENTIAL AND PROPRIETARY INFORMATION OF AMPHENOL INTERCON SYSTEMS AND MAY NOT BE DISCLOSED, REPRODUCED OR OTHERWISE USED WITHOUT WRITTEN PERMISSION</small>				AMPHENOL INTERCON SYSTEMS INC. HARRISBURG, PA 17110	
<small>ALL DIMENSIONS AND TOLERANCES PER ASME Y14.5M-2009</small> <small>ALL DIMENSIONS ARE IN MILLIMETERS UNLESS OTHERWISE SPECIFIED</small>		THIRD ANGLE PROJECTION 		NAME <b>LYNX RECEPTACLE ASSEMBLY</b>	
INSPECTION ◇ FIRST PIECE △ SPC ○ IN-PROCESS		TOLERANCES UNLESS SPECIFIED OTHERWISE: 1PLC ± 0.3 2PLC ± 0.13 3PLC ± 0.050 ANGLES ± 1°		SIZE <b>B</b>	PROD CODE 445
MATERIAL □		FINISH □		DRAWING NUMBER C- 11828	REV 13
<b>METRIC</b>		SCALE 10:1		CUSTOMER SHEET 1 OF 2	

### TAPE AND REEL PACKAGING



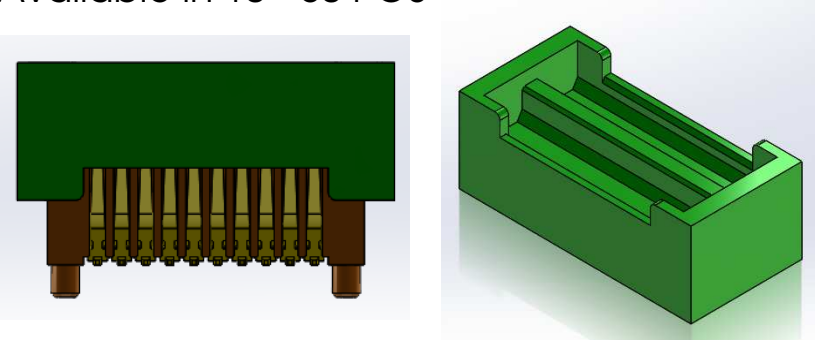
PULL OUT DIRECTION



POS	TAPE WIDTH
10	24.00 +/- 0.30 MM
20	32.00 +/- 0.30 MM
30	32.00 +/- 0.30 MM
40	44.00 +/- 0.30 MM
50	56.00 +/- 0.30 MM
60	56.00 +/- 0.30 MM
70	56.00 +/- 0.30 MM

KAPTON TAPE			
POS	LENGTH	WIDTH	THICKNESS
10	5 MM	3.3 MM	0.05 MM
20	5 MM	3.3 MM	0.05 MM
30	15 MM	3.3 MM	0.05 MM
40	15 MM	3.3 MM	0.05 MM
50	15 MM	3.3 MM	0.05 MM
60	15 MM	3.3 MM	0.05 MM
70	15 MM	3.3 MM	0.05 MM

Protective Cap  
- Available in 10 - 60 POS



THIS DOCUMENT CONTAINS CONFIDENTIAL AND PROPRIETARY INFORMATION OF AMPHENOL INTERCON SYSTEMS AND MAY NOT BE DISCLOSED, REPRODUCED OR OTHERWISE USED WITHOUT WRITTEN PERMISSION

Amphenol InterCon Systems

AMPHENOL INTERCON SYSTEMS INC. HARRISBURG, PA 17110

NAME: LYNX RECEPTACLE ASSEMBLY

INSPECTION: FIRST PIECE, SPC, IN-PROCESS

TOLERANCES UNLESS SPECIFIED OTHERWISE: 1PLC ±0.3, 2PLC ±0.13, 3PLC ±0.050, ANGLES ±1°

THIRD ANGLE PROJECTION

SCALE: 10:1

SHEET 2 OF 2