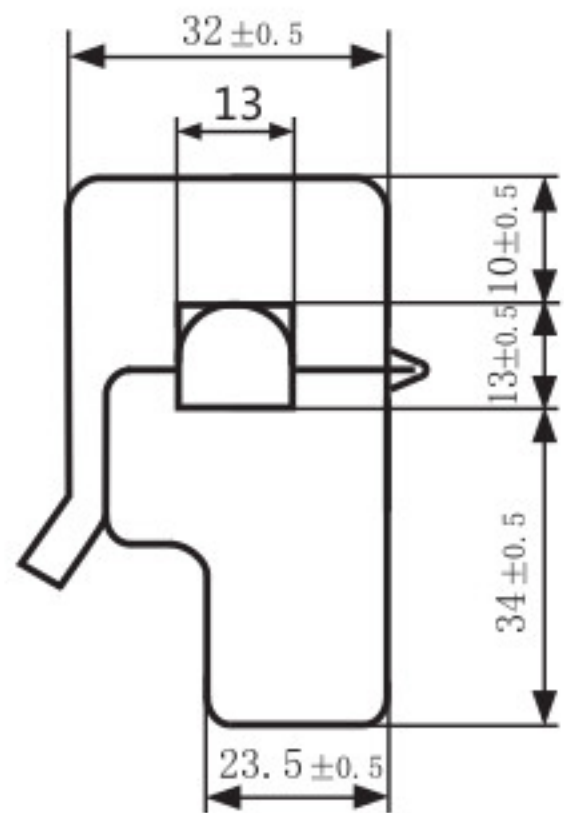
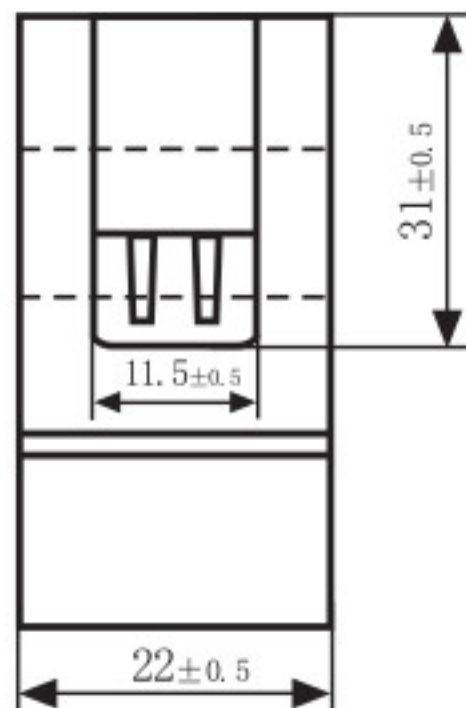


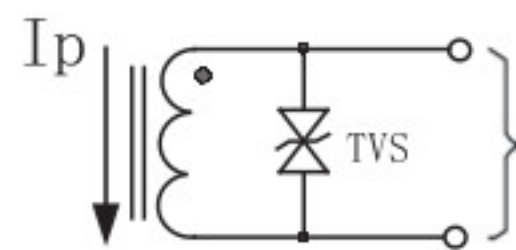
Outline size diagram: (in mm)



Front View



Side View



TVS: Transient-voltage Suppressor

Current output type

Schematic Diagram

Typical table of technical parameters:

input current	output voltage	non-linearity	build-in sampling resistance (R_L)
0-100A	0-50mV	$\pm 3\%$	Ω
turn ratio	resistance grade	work temperature	dielectric strength(between shell and output)
100A:0.05A	Grade B	$-25^{\circ}\text{C} \sim +70^{\circ}\text{C}$	1000V AC/1min 5mA