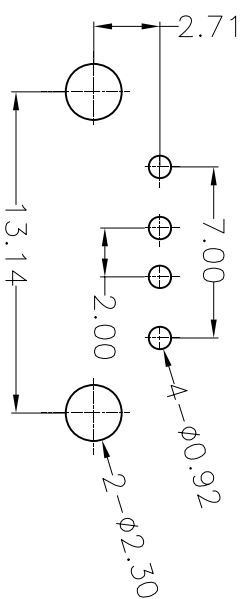
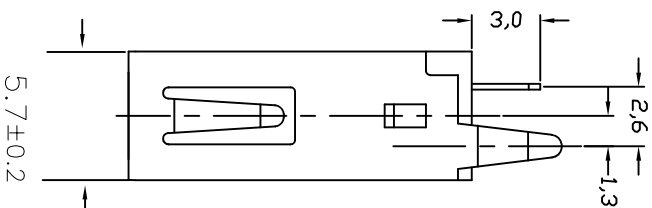
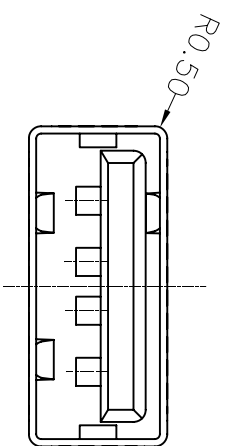


8



P.C.B LAYOUT
BOTTOM VIEW



NOTE:

- 1.1 Contact resistance: 30 MΩ Max
- 1.2 Insulation resistance: 1000 MΩ Min
- 1.3 Dielectric voltage: 500V AC one sec level in
- 1.4 Operating temperature: -55°C~+105°C
- 1.5 Total mating force: 3.5 Kgf Max.
- 1.6 Total unmating force: 1.0 Kgf Min.
- 1.7 Major DIM: Δ

		一般公差 GENERAL TOL.		制图 DRAWN		深圳市金航标电子有限公司		WWW.BDS666.COM		张数 SHEET		0#	
		X	±0.50	审核 CHECKED		KH-AF180WJ-13		0755-83044319		单位 UNIT		mm	
		.XX	±0.10	批准 APPROVAL		产品料号 PRODUCT NAME				比例 SCALE		3:1	
版本 REV		变更说明 MODIFICATION		签名 SIGN		产品料号 PRT NO		图号 DWG NO					
		2007.5.29		时间 DATE		角法 PROJ.							
		X ±2.0°											
		X ±1.0°											
		XX ±0.5°											