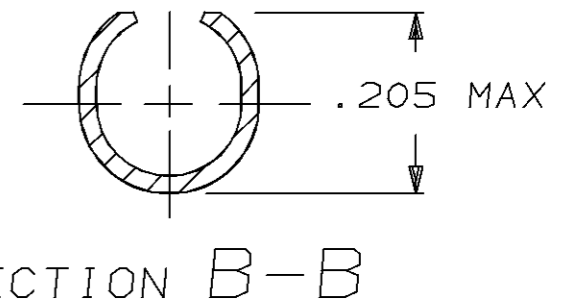
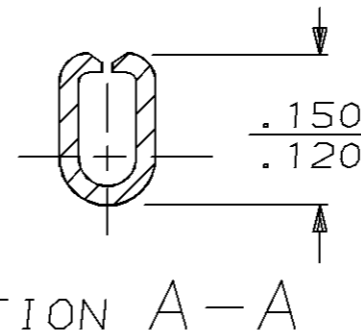
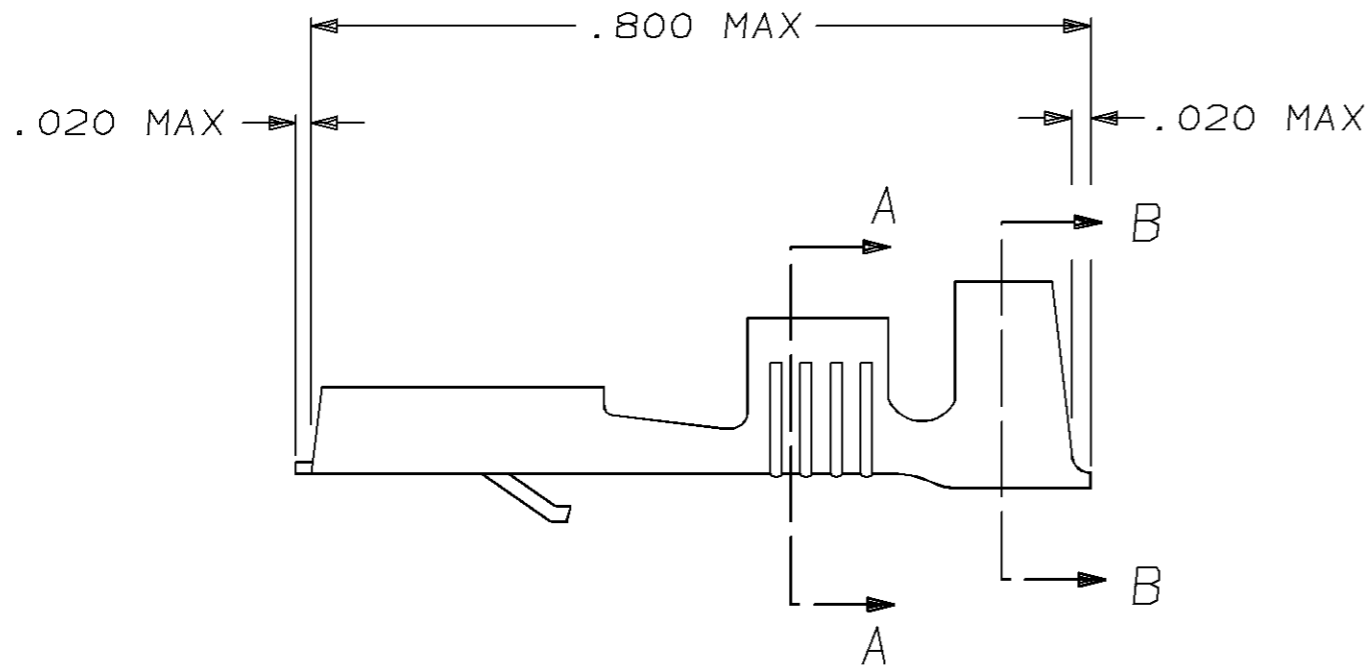


THIS DRAWING IS UNPUBLISHED. RELEASED FOR PUBLICATION, 19 .  
 © COPYRIGHT 19 BY AMP INCORPORATED. ALL INTERNATIONAL RIGHTS RESERVED.

LOC	DIST	P	F	REVISIONS				
AF	50			ZONE	LTR	DESCRIPTION	DATE	APPD
					B	REV PER 0710-0186-95	5/4/95	JR/JG

- 1 SUPPLIED IN LOOSE PIECE FORM.
- 2 SEE STRIP DWG. 42281 FOR ADDITIONAL DETAILS.



<b>OBSOLETE</b>	SILVER	BRASS	.120-.160 DIA	#18-#14 AWG	.032	<del>42282-3</del>			
	TIN	BRASS	.120-.160 DIA	#18-#14 AWG	.032	42282-2			
	-	BRASS	.120-.160 DIA	#18-#14 AWG	.032	42282-1			
	FINISH	MATERIAL	INSUL RANGE	WIRE SIZE	MATING TAB THK ±.001	PART NO			
SEE TABLE		SEE TABLE		SEE TABLE		AMP AMP Incorporated Harrisburg, PA 17105-3608  NAME RECEPTACLE, FASTIN-FASTON, .250 SERIES  SIZE <b>B</b> CAGE CODE 00779 DRAWING NO <b>C-42282</b> SCALE 5:1 SHEET 1 OF 1			
							DO NOT SCALE PRINT. UNLESS SPECIFIED DIMENSIONS IN mm [INCHES] TOLERANCES ON: 2 PLC DEC ± - 3 PLC DEC ± .015 ANGLES ± -		DR 6/16/92 JR RUTH
							FINISH		CHK 6/16/92 MS FEHER
							SEE TABLE		APPD 6/16/92 J GILLESPIE
SEE TABLE		SEE TABLE		SEE TABLE		SEE TABLE			
								MATERIAL	
SEE TABLE		SEE TABLE		SEE TABLE		SEE TABLE			
								FINISH	
SEE TABLE		SEE TABLE		SEE TABLE		SEE TABLE			
								FINISH	
SEE TABLE		SEE TABLE		SEE TABLE		SEE TABLE			
								FINISH	

THIS DRAWING IS A CONTROLLED DOCUMENT FOR AMP INCORPORATED. IT IS SUBJECT TO CHANGE AND THE CONTROLLING ENGINEERING ORGANIZATION SHOULD BE CONTACTED FOR THE LATEST REVISION.