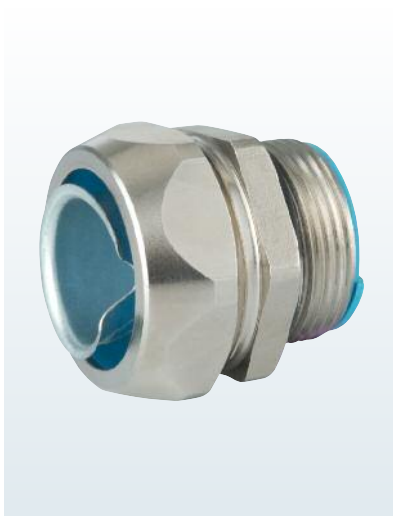


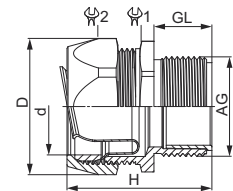
## Metal-Fitting Pro



Material	Nickel plated brass
Protection Category	IP 67
Operating Temperature	-20 °C – +80 °C (-4 °F – +176 °F)

**RoHS**

- // Fixed mounted conduit fitting
- // Locknut optional



AG	d mm	D mm	GL mm	H mm	1 mm	2 mm	fits to Metal-Conduit Pro DN	Number
M 12	16,5	24,5	10	31	20	22	-/09	1.572.1260.50
M 16	19	29,2	10	35	24	26	11/12	1.572.1660.51
M 16	22	32,6	11,5	39	27	29	12/13	1.572.1660.50
M 20	22	32,6	13	38,7	27	29	16	1.572.2060.50
M 25	27,5	38,8	15	41	33	35	21	1.572.2560.50
M 32	34,5	50	15	49	43	45	26/27	1.572.3260.50
M 40	43,5	60	16	51	52	54	35	1.572.4060.50
M 50	49,5	69,3	18	61	60	63	40	1.572.5060.50
M 63	62	85	20	73	74	77	51	1.572.6360.50
PG 7	16,5	24,5	10	31	20	22	-/09	1.572.0760.14
PG 9	16,5	24,5	10	31	20	22	11/12	1.572.0960.14
PG 11	19	29,2	11,5	35	24	26	12/13	1.572.1160.14
PG 13,5	22	32,6	13	39	27	29	16	1.572.1360.14
PG 16	22	32,6	13	38,7	27	29	16	1.572.1660.14
PG 21	27,5	38,8	15	41	33	35	21	1.572.2160.14
PG 29	34,5	50	15	49	43	45	26/27	1.572.2960.14
PG 36	43,5	60	16	51	52	54	35	1.572.3660.14
PG 42	49,5	69,3	18	61	60	63	40	1.572.4260.14
PG 48	62	85	20	73	74	77	51	1.572.4860.14
NPT 1/4"	16,5	24,5	10	31	20	22	10/11	1.572.1460.70
NPT 3/8"	19	29,2	11,5	35	20	22	12/13	1.572.3860.70
NPT 1/2"	22	32,6	13	38,7	27	29	16	1.572.1260.70
NPT 3/4"	27,5	38,8	15	41	33	35	21	1.572.3460.70
NPT 1"	34,5	50	15	49	43	45	27/26	1.572.1060.70
NPT 1 1/4"	43,5	60	16	51	52	54	35	1.572.5460.70
NPT 1 1/2"	49,5	69,3	18	61	60	63	40	1.572.6460.70
NPT 2"	62	85	20	73	74	77	51	1.572.2060.70