



# 小型摇臂开关 Miniature Rocker and Lever Handle Switch RLS Series



## 型号说明 Ordering Information

RLS-102-A2T

- 支架 Support bracket
- 端子种类 Terminal options
- 摇臂种类 Rocker options
- 电路特性 Circuitry trait
- 刀数 Poles
- 摇臂开关 Rocker and lever handle Switch

## 技术特性 Specification

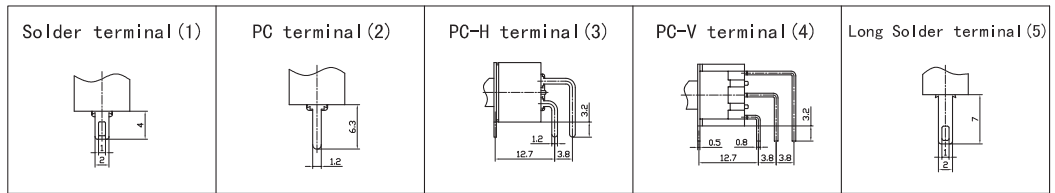
- 1.规格 Rating:6A 125VAC;3A 250VAC
- 2.接触电阻 Contact Resistance:20mΩ max
- 3.绝缘电阻 Insulation Resistance:500VDC 1000MΩ min
- 4.耐电压 Dielectric Strength:1500VAC, 1Minute
- 5.操作温度 Operating Temperature:-25℃ ~ +85℃
- 6.电气寿命 Electrical Life:10,000 Cycles

### 电路特性Circuitry trait

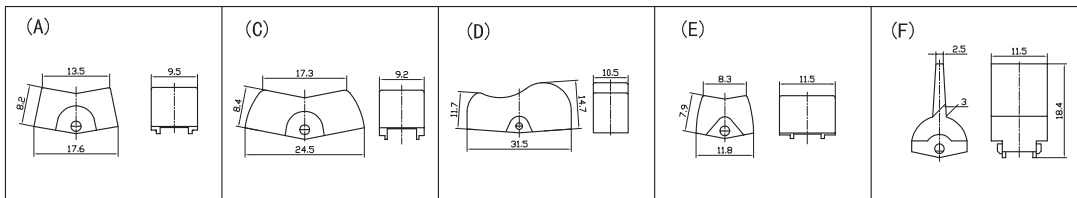
02	ON	-	ON
12	ON	-	(ON)
03	ON	OFF	ON
13	ON	OFF	(ON)
23	(ON)	OFF	(ON)

( ) : 回弹指示 Indicates Momentary

### 端子种类Terminal options



### 摇臂种类 Rocker options



	<p>RLS-102-A1 ON-ON            RLS-112-A1 ON-(ON)            RLS-103-A1 ON-OFF-ON            RLS-113-A1 ON-OFF-(ON)            RLS-123-A1 (ON)-OFF-(ON)            SPDT 3P</p>	
	<p>RLS-202-A1 ON-ON            RLS-212-A1 ON-(ON)            RLS-203-A1 ON-OFF-ON            RLS-213-A1 ON-OFF-(ON)            RLS-223-A1 (ON)-OFF-(ON)            DPDT 6P</p>	
	<p>RLS-302-A1 ON-ON            RLS-303-A1 ON-OFF-ON            3PDT 9P</p>	
	<p>RLS-102-A2T ON-ON            RLS-112-A2T ON-(ON)            RLS-103-A2T ON-OFF-ON            RLS-113-A2T ON-OFF-(ON)            RLS-123-A2T (ON)-OFF-(ON)            SPDT 3P</p>	



# 小型摇臂开关 Miniature Rocker and Lever Handle Switch RLS Series

	<p> <b>RLS-202-A2T</b> ON-ON  <b>RLS-212-A2T</b> ON-(ON)  <b>RLS-203-A2T</b> ON-OFF-ON  <b>RLS-213-A2T</b> ON-OFF-(ON)  <b>RLS-223-A2T</b> (ON)-OFF-(ON)            DPDT 6P         </p>	
	<p> <b>RLS-102-A3</b> ON-ON  <b>RLS-112-A3</b> ON-(ON)  <b>RLS-103-A3</b> ON-OFF-ON  <b>RLS-113-A3</b> ON-OFF-(ON)  <b>RLS-123-A3</b> (ON)-OFF-(ON)            SPDT 3P         </p>	
	<p> <b>RLS-102-A3T</b> ON-ON  <b>RLS-112-A3T</b> ON-(ON)  <b>RLS-103-A3T</b> ON-OFF-ON  <b>RLS-113-A3T</b> ON-OFF-(ON)  <b>RLS-123-A3T</b> (ON)-OFF-(ON)            SPDT 3P         </p>	
	<p> <b>RLS-202-A3</b> ON-ON  <b>RLS-212-A3</b> ON-(ON)  <b>RLS-203-A3</b> ON-OFF-ON  <b>RLS-213-A3</b> ON-OFF-(ON)  <b>RLS-223-A3</b> (ON)-OFF-(ON)            DPDT 6P         </p>	
	<p> <b>RLS-102-A4</b> ON-ON  <b>RLS-112-A4</b> ON-(ON)  <b>RLS-103-A4</b> ON-OFF-ON  <b>RLS-113-A4</b> ON-OFF-(ON)  <b>RLS-123-A4</b> (ON)-OFF-(ON)            SPDT 3P         </p>	
	<p> <b>RLS-202-A4</b> ON-ON  <b>RLS-212-A4</b> ON-(ON)  <b>RLS-203-A4</b> ON-OFF-ON  <b>RLS-213-A4</b> ON-OFF-(ON)  <b>RLS-223-A4</b> (ON)-OFF-(ON)            DPDT 6P         </p>	
	<p> <b>RLS-102-A4T</b> ON-ON  <b>RLS-112-A4T</b> ON-(ON)  <b>RLS-103-A4T</b> ON-OFF-ON  <b>RLS-113-A4T</b> ON-OFF-(ON)  <b>RLS-123-A4T</b> (ON)-OFF-(ON)            SPDT 3P         </p>	
	<p> <b>RLS-202-A4T</b> ON-ON  <b>RLS-212-A4T</b> ON-(ON)  <b>RLS-203-A4T</b> ON-OFF-ON  <b>RLS-213-A4T</b> ON-OFF-(ON)  <b>RLS-223-A4T</b> (ON)-OFF-(ON)            DPDT 6P         </p>	



# 小型摇臂开关 Miniature Rocker and Lever Handle Switch RLS Series

	<p> <b>RLS-102-C1</b> ON-ON  <b>RLS-112-C1</b> ON-(ON)  <b>RLS-103-C1</b> ON-OFF-ON  <b>RLS-113-C1</b> ON-OFF-(ON)  <b>RLS-123-C1</b> (ON)-OFF-(ON)            SPDT 3P         </p>	
	<p> <b>RLS-202-C1</b> ON-ON  <b>RLS-212-C1</b> ON-(ON)  <b>RLS-203-C1</b> ON-OFF-ON  <b>RLS-213-C1</b> ON-OFF-(ON)  <b>RLS-223-C1</b> (ON)-OFF-(ON)            DPDT 6P         </p>	
	<p> <b>RLS-102-D1</b> ON-ON  <b>RLS-112-D1</b> ON-(ON)  <b>RLS-103-D1</b> ON-OFF-ON  <b>RLS-113-D1</b> ON-OFF-(ON)  <b>RLS-123-D1</b> (ON)-OFF-(ON)            SPDT 3P         </p>	
	<p> <b>RLS-202-D1</b> ON-ON  <b>RLS-212-D1</b> ON-(ON)  <b>RLS-203-D1</b> ON-OFF-ON  <b>RLS-213-D1</b> ON-OFF-(ON)  <b>RLS-223-D1</b> (ON)-OFF-(ON)            DPDT 6P         </p>	
	<p> <b>RLS-102-E5</b> ON-ON  <b>RLS-103-E5</b> ON-OFF-ON            SPDT 3P         </p>	
	<p> <b>RLS-202-E5</b> ON-ON  <b>RLS-203-E5</b> ON-OFF-ON            DPDT 6P         </p>	
	<p> <b>RLS-102-F1</b> ON-ON  <b>RLS-112-F1</b> ON-(ON)  <b>RLS-103-F1</b> ON-OFF-ON  <b>RLS-113-F1</b> ON-OFF-(ON)  <b>RLS-123-F1</b> (ON)-OFF-(ON)            SPDT 3P         </p>	
	<p> <b>RLS-202-F1</b> ON-ON  <b>RLS-212-F1</b> ON-(ON)  <b>RLS-203-F1</b> ON-OFF-ON  <b>RLS-213-F1</b> ON-OFF-(ON)  <b>RLS-223-F1</b> (ON)-OFF-(ON)            DPDT 6P         </p>	