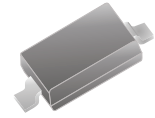


## CDSW4448-G

**Reverse Voltage: 75 Volts**  
**Power Dissipation: 400 mW**  
**RoHS Device**

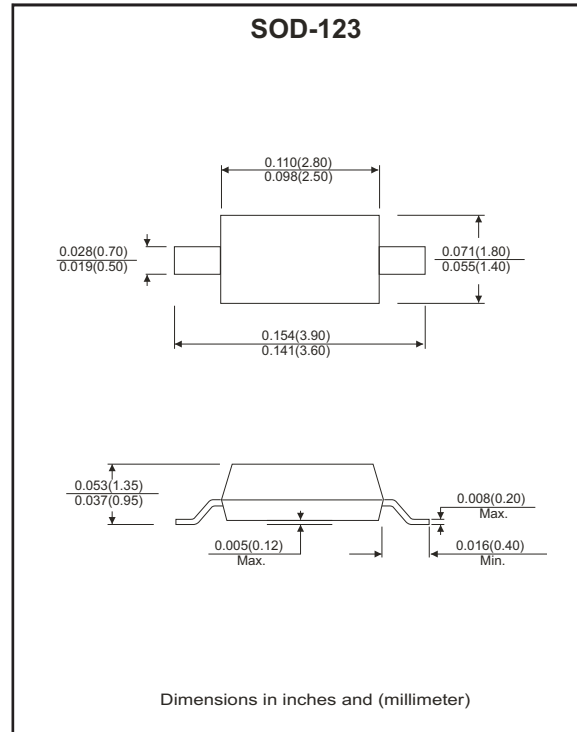


### Features

- Design for mounting on small surface.
- High speed switching.
- High mounting capability, strong surge withstand, high reliability.
- Also available in other standard case:  
 CDSN4448 - 1206 size  
 CDSF4448 - 1005 size  
 CDSU4448 - 0603 size

### Mechanical data

- Case: SOD-123, molded plastic.
- Terminals: solderable per MIL-STD-750, method 2026.
- Polarity: indicated by cathode band.
- Approx. weight: 0.01 grams



### Maximum Ratings and Electrical Characteristics

(at Ta=25°C unless otherwise noted)

Parameter	Symbol	Conditions	Value	Units
Repetitive peak reverse voltage	V <sub>RRM</sub>		75	V
Reverse voltage	V <sub>R</sub>		75	V
Forward current	I <sub>FM</sub>		500	mA
Peak surge forward current	I <sub>FSM</sub>	T=1.0 μS	4	A
Power dissipation	P <sub>D</sub>		400	mW
Maximum forward voltage	V <sub>F</sub>	@I <sub>F</sub> =5mA @I <sub>F</sub> =10mA @I <sub>F</sub> =100mA @I <sub>F</sub> =150mA	0.72 0.855 1 1.25	V
Maximum reverse current	I <sub>R</sub>	@V <sub>R</sub> =75V @V <sub>R</sub> =25V	2.5 0.025	μA
Maximum reverse recovery time	T <sub>rr</sub>	I <sub>F</sub> =10mA, R <sub>L</sub> =100Ω	4	nS
Typical diode capacitance	C <sub>J</sub>	V <sub>R</sub> =0V, f=1.0MHz	4	pF
Maximum junction temperature	T <sub>J</sub>		125	°C
Storage temperature	T <sub>STG</sub>		-55 to +125	°C

## RATING AND CHARACTERISTIC CURVES (CDSW4448-G)

Fig.1 - Forward Characteristics

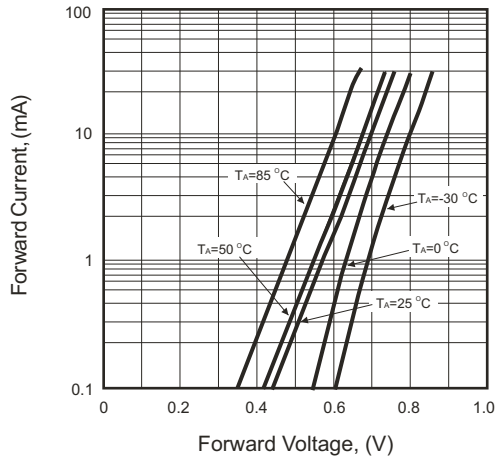


Fig.2 - Reverse Characteristics

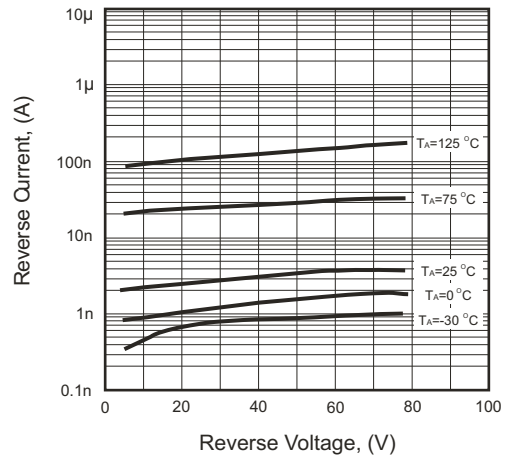


Fig.3 - Capacitance Between Terminals Characteristics

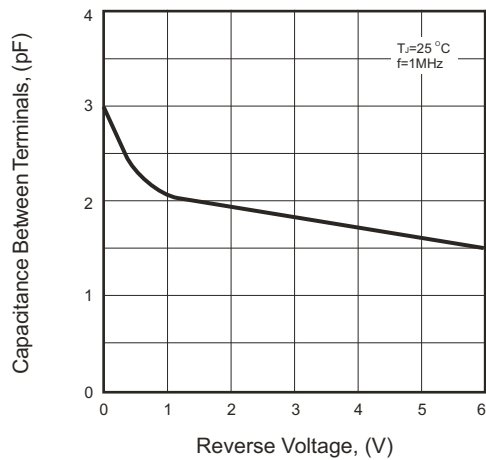
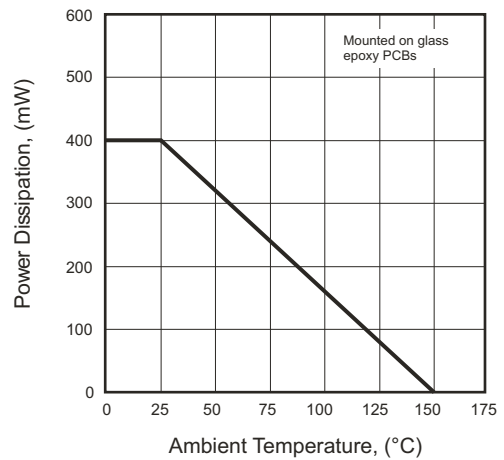


Fig.4 - Power Derating Curve



# Mouser Electronics

Authorized Distributor

Click to View Pricing, Inventory, Delivery & Lifecycle Information:

[Comchip Technology:](#)

[CDSW4448-G](#)