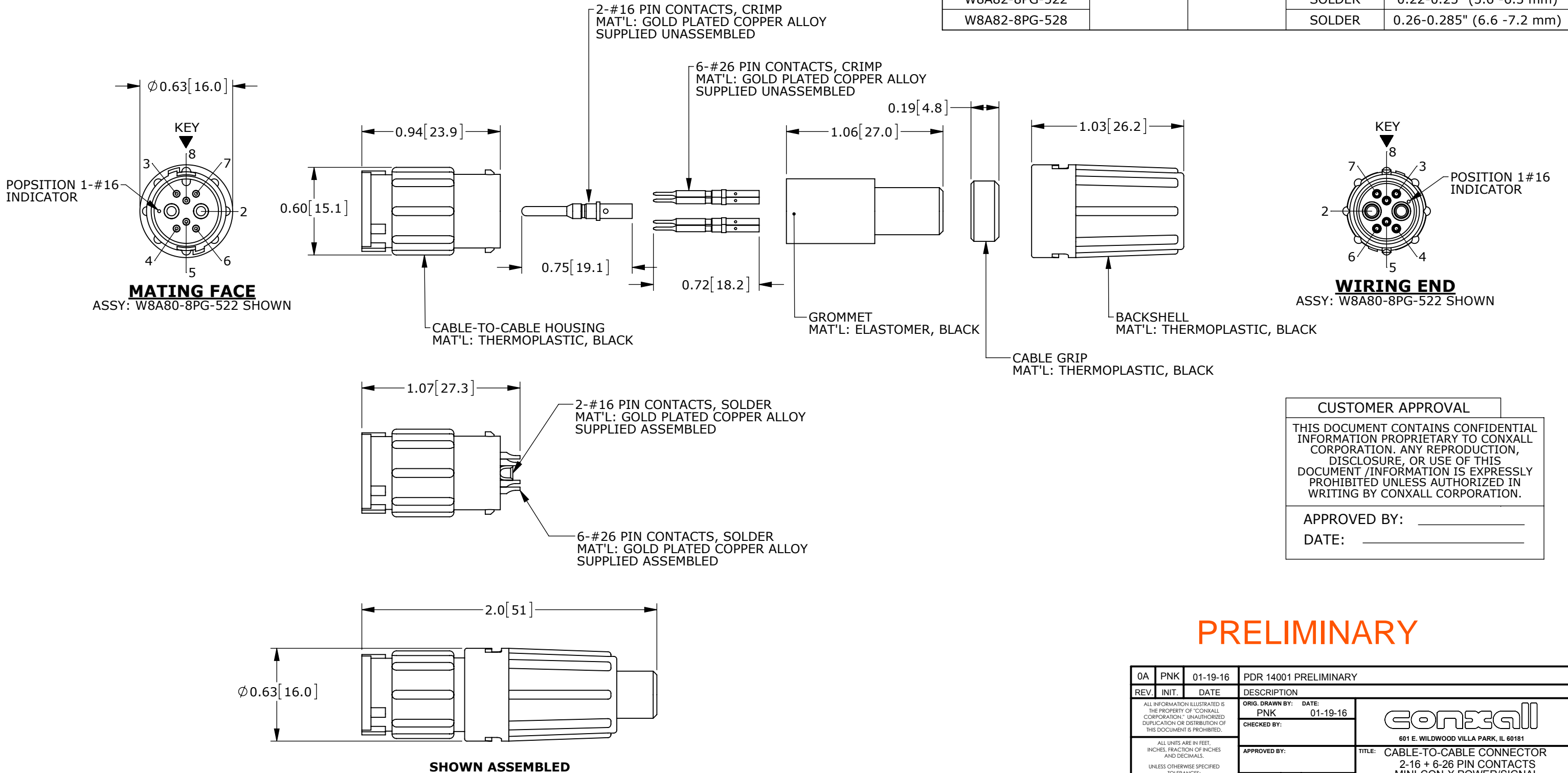


CUSTOMER PRINT

PART NUMBER: W8A8X-8PG-5XX_CD

- NOTES:
 1. ALL PARTS TO BE BULK PACKED.
 2. SEE DRAWING HPMIMIX FOR HOLE PATTERN.
 3. DIMENSIONS ARE FOR REFERENCE ONLY.

CONNECTOR P/N	POSITIONS		CONTACT STYLE	CABLE O.D. RANGE
	#16	#26		
W8A80-8PG-513	2	6	CRIMP	0.13-0.15" (3.3 -3.8 mm)
W8A80-8PG-516			CRIMP	0.16-0.18" (4.1 -4.6 mm)
W8A80-8PG-519			CRIMP	0.19-0.21" (4.8 -5.3 mm)
W8A80-8PG-522			CRIMP	0.22-0.25" (5.6 -6.3 mm)
W8A80-8PG-528			CRIMP	0.26-0.285" (6.6 -7.2 mm)
W8A82-8PG-513			SOLDER	0.13-0.15" (3.3 -3.8 mm)
W8A82-8PG-516			SOLDER	0.16-0.18" (4.1 -4.6 mm)
W8A82-8PG-519			SOLDER	0.19-0.21" (4.8 -5.3 mm)
W8A82-8PG-522			SOLDER	0.22-0.25" (5.6 -6.3 mm)
W8A82-8PG-528			SOLDER	0.26-0.285" (6.6 -7.2 mm)



CUSTOMER APPROVAL

THIS DOCUMENT CONTAINS CONFIDENTIAL INFORMATION PROPRIETARY TO CONXALL CORPORATION. ANY REPRODUCTION, DISCLOSURE, OR USE OF THIS DOCUMENT /INFORMATION IS EXPRESSLY PROHIBITED UNLESS AUTHORIZED IN WRITING BY CONXALL CORPORATION.

APPROVED BY: _____

DATE: _____

PRELIMINARY

RoHS COMPLIANT

0A	PNK	01-19-16	PDR 14001 PRELIMINARY
REV.	INIT.	DATE	DESCRIPTION
			ORIG. DRAWN BY: PNK DATE: 01-19-16
ALL INFORMATION ILLUSTRATED IS THE PROPERTY OF CONXALL CORPORATION. UNAUTHORIZED DUPLICATION OR DISTRIBUTION OF THIS DOCUMENT IS PROHIBITED.			<p>601 E. WILDWOOD VILLA PARK, IL 60181</p>
ALL UNITS ARE IN FEET, INCHES, FRACTION OF INCHES AND DECIMALS. UNLESS OTHERWISE SPECIFIED TOLERANCES: 3 PLACE DECIMALS ±.005 ANGLES ±1° FRACTIONS ±1/16			
APPROVED BY:			TITLE: CABLE-TO-CABLE CONNECTOR 2-16 + 6-26 PIN CONTACTS MINI-CON-X POWER/SIGNAL
SCALE	SIZE	SHEET	CUSTOMER: STANDARD PRODUCT
NTS	B	1 OF 1	
FILE: W8A8X-8PG-5XX_CD	DIRECTORY: SLW	PART NUMBER: W8A8X-8PG-5XX_CD	REV 0A

Mouser Electronics

Authorized Distributor

Click to View Pricing, Inventory, Delivery & Lifecycle Information:

[Switchcraft:](#)

[W8A82-8PG-522](#) [W8A80-8PG-522](#) [W8A80-8PG-528](#) [W8A82-8PG-528](#)