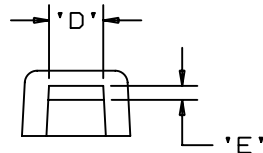
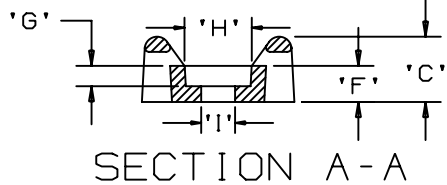
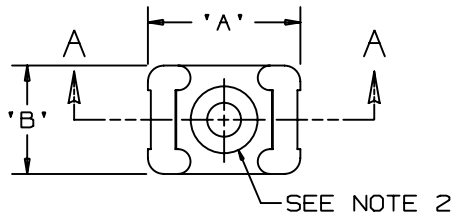


THIS COPY IS PROVIDED ON A RESTRICTED BASIS AND IS NOT TO BE USED IN ANY WAY DETRIMENTAL TO THE INTERESTS OF PANDUIT CORP.

PANDUIT PART NO.*	MAT'L SUFFIX	RECOMMENDED FASTENER	'A'	'B'	'C'	'D'	'E'	'F'	'G' (REF)	'H' (REF)	'I' (REF)	USE WITH THESE CABLE TIE CROSS SECTIONS	WEIGHT (g) lbs/100 pcs.
TM1S4	NONE -0 -30 -69	#4 (M2.5) SCREW							0.075 (1.9)	0.226	0.121	MINIATURE ONLY	0.064 (29.0)
TM1S6	NONE -0 -30 -69	#6 (M3) SCREW	0.513 (13.0)	0.316 (8.0)	0.230 (5.8)	0.130 ±.020 (3.3) ±(.5)	0.067 ±.020 (1.7) ±(.5)	0.125 (3.2)	0.080 (2.0)	0.277	0.146		0.057 (26.0)

MAT'L SUFFIX	MATERIAL
NONE	NYLON 6/6
-0	WEATHER RESISTANT NYLON
-30	HEAT STABILIZED NYLON
-69	FLAME RETARDANT NYLON



NOTES:

- SEE CURRENT PRICE SHEET FOR PART NUMBER SUFFIX DESIGNATION FOR PACKAGE SIZE.
- HOLE DIMENSIONS SHOULD ACCOMMODATE SPECIFIED RECOMMENDED FASTENER.

DIMENSIONS IN BRACKETS ARE METRIC [mm]

CAD FILENAME/LAYERS G00239CN_PB_TMS_A_08



CORP. TINLEY PARK, ILLINOIS

TM1S - TIE MOUNT

UNLESS OTHERWISE SPECIFIED, DIMENSIONAL TOLERANCES ARE:
 (.X) ±0.05 (1.3) (.XXX) ±0.010 (0.25)
 (.XX) ±0.02 (0.5) ANGLES ± 5°

UNLESS OTHERWISE SPECIFIED, ALL DIMENSIONS ARE GIVEN IN INCHES, THIRD ANGLE PROJECTION.

DRAWN BY GDH

MAT'L:

SCALE NONE

REV	DATE	BY	CHK	DESCRIPTION	ECN	R	CUST	SUP
8	6-8-05	TMSA		CHANGED RECOMMENDED FASTENER FROM M3.0 TO M2.5	G00239CN	8		

DATE 02-20-95

SEE TABLE

DRAWING NO.

G00239CN

DWG SIZE A

Mouser Electronics

Authorized Distributor

Click to View Pricing, Inventory, Delivery & Lifecycle Information:

Panduit:

[TM1S6-M](#) [TM1S6-C](#) [TM1S4-C](#) [TM1S4-M](#) [TM1S4-C0](#) [TM1S6-C0](#) [TM1S4-M30](#) [TM1S6-M30](#) [TM1S4-M69](#) [TM1S6-M0](#)