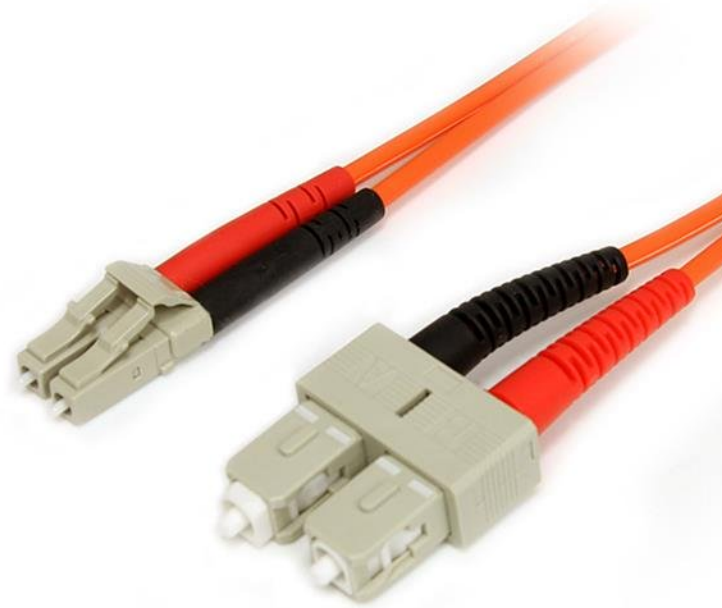


Fiber Optic Cable - Multimode Duplex 62.5/125 - LSZH - LC/SC - 1 m

Product ID: FIBLCSC1



The FIBLCSC1 1-meter (3.2ft) Multimode 62.5/125 Duplex Fiber Patch Cable is terminated with one LC (male) connector and one SC (male) connector, to provide the necessary connection between fiber networking devices for high-speed, long distance networks.

This LC-SC patch cable is housed in a LSZH (Low-Smoke, Zero-Halogen) flame retardant jacket, to ensure minimal smoke, toxicity and corrosion when exposed to high sources of heat, in the event of a fire. Making it ideal for use in industrial settings, central offices and schools, as well as residential settings where building codes are a consideration.

To ensure optimum performance, our multimode fiber duplex cable is individually tested and certified to be within acceptable optical insertion loss limits for guaranteed compatibility and 100% reliability.

Backed by Lifetime Warranty, our LC-SC Multimode Fiber Patch cable is guaranteed to provide long-lasting dependability, and top quality performance.

Certifications, Reports and Compatibility



Applications

- Ideal solution for data applications requiring high speed data transmission
- Broadband systems
- Telecommunication/Data communication
- Used by long distance networks with mission critical data

Features

- Attenuation loss meets or exceeds industry standards
- LSZH (Low-Smoke, Zero-Halogen) cable jacket
- Immune to electrical interference

Hardware	Warranty	Lifetime
	Fiber Size	62.5/125
	Fire Rating	LSZH Rated (Low Smoke Zero Halogen)
Performance	Cable Rating	1Gbps / 10Gbps
	Fiber Classification	OM1
	Maximum Data Transfer Rate	10Gbps
	Type	Multi Mode
Connector(s)	Connector A	1 - Fiber Optic LC Duplex Male
	Connector B	1 - Fiber Optic SC Duplex Male
Environmental	Humidity	0~90% RH
	Operating Temperature	-20°C to 60°C (-4°F to 140°F)
	Storage Temperature	-20°C to 60°C (-4°F to 140°F)
Physical Characteristics	Cable Length	1 m [3.3 ft]
	Color	Orange
	Product Height	0.000
	Product Length	1 m [3.3 ft]
	Product Width	0.000
	Weight of Product	26 g [0.9 oz]
Packaging Information	Package Height	26 mm [1 in]
	Package Length	22 cm [8.7 in]
	Package Width	20 cm [7.9 in]
	Shipping (Package) Weight	35 g [1.2 oz]
What's in the Box	Included in Package	1 - 1m Multimode 62.5/125 Duplex Fiber Patch Cable LC - SC

Product appearance and specifications are subject to change without notice.