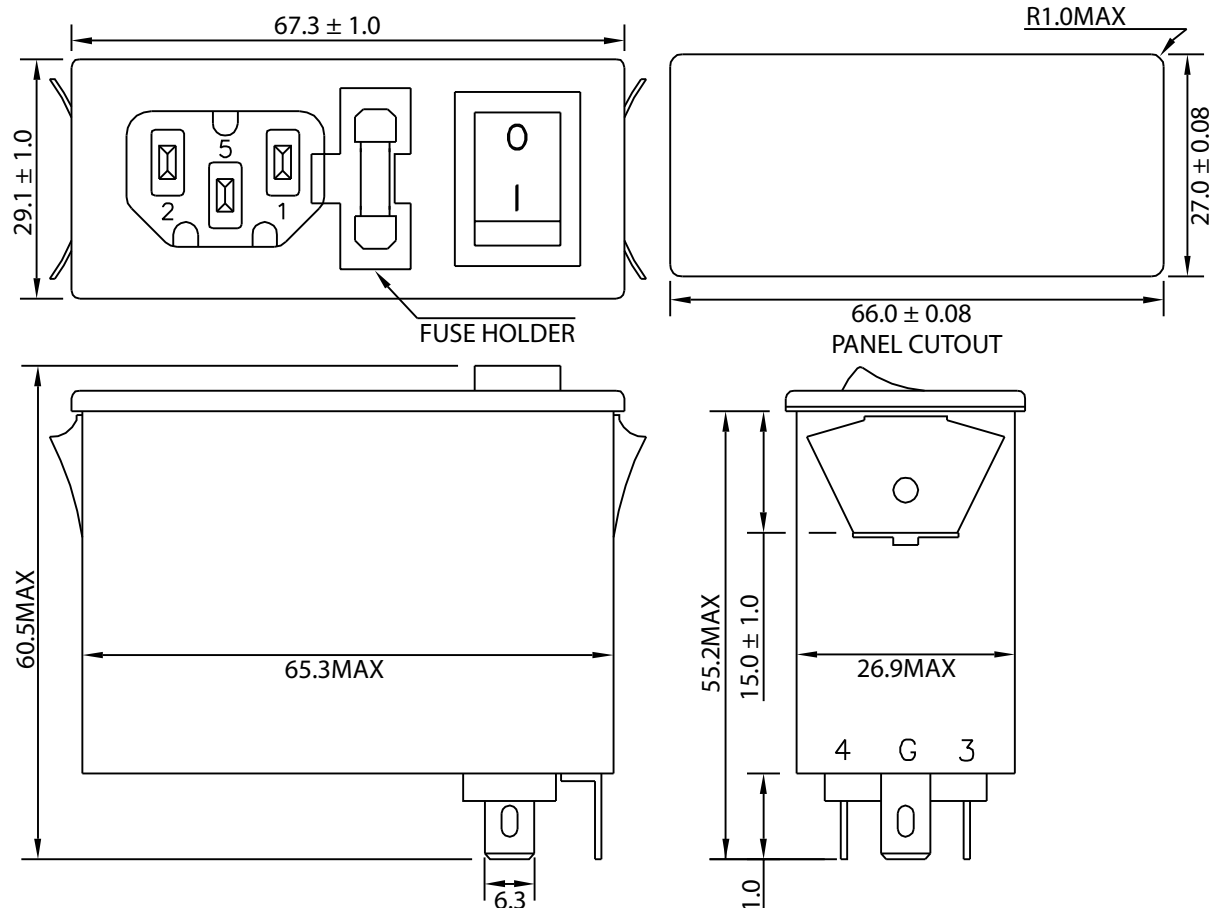


THESE DRAWINGS ARE THE PROPERTY OF QUALTEK ELECTRONICS AND NOT TO BE REPRODUCED FOR OR COMMUNICATED TO A THIRD PARTY WITHOUT THE EXPRESS WRITTEN PERMISSION OF AN OFFICER OF QUALTEK ELECTRONICS.

REVISION			
REV.	DESCRIPTION	DATE	APPROVED
B	RoHS Compliancy	06-01-06	DP
C	Updated Specifications	03-19-12	LY

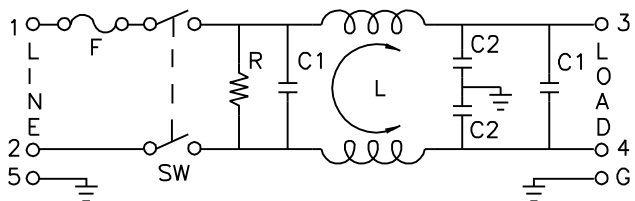
1. PHYSICAL DIMENSIONS



ELECTRICAL CHARACTERISTICS:

- 1-1. VOLTAGE RATING.....115/250VAC
  - 1-2. CURRENT RATING  
A. @ 115 VAC.....6 A RMS MAX  
B. @ 250 VAC.....4 A RMS MAX
  - 1-3. OPERATING FREQUENCY.....50/60Hz
  - 1-4. LEAKAGE CURRENT: EACH LINE TO GROUND  
A. @ 115 VAC 60Hz.....0.25 mA MAX  
B. @ 250 VAC 50Hz.....0.45 mA MAX
  - 1-5. HIPOT RATING (FOR ONE MINUTE)  
A. LINE TO GROUND.....2250 VDC  
B. LINE TO LINE.....1450 VDC
  - 1-6. MINIMUM INSERTION LOSS IN dB: (AT 50 OHM SYSTEM)
- | FREQ. MHz    | .01 | .05 | .10 | .15 | .50 | 1.0 | 5.0 | 10 | 30 |
|--------------|-----|-----|-----|-----|-----|-----|-----|----|----|
| COM. MODE dB | /   | /   | 15  | 16  | 25  | 30  | 42  | 45 | 40 |
| DIF. MODE dB | /   | /   | 6   | 6   | 30  | 48  | 40  | 40 | 40 |
- 1-7. OPERATING TEMPERATURE.....-25° TO +100° C
  - 1-8. SAFETY:
  - 1-9. RoHS COMPLIANT

2. ELECTRICAL SCHEMATIC



L: 1.3mH  
C1: 0.1uF  
C2: 3300pF  
R: 2.2MΩ

NOTES:

1. MOUNTING PANEL THICKNESS 0.8mm TO 1.6mm

**CONTROLLED**

Dim range (mm)	Tolerance +/- (mm)	Qualtek Electronics Corp. PPC DIVISION		
		Part Number: 862-06/003		
0-1	0.15	Description: EMI FILTER		
1-6	0.20			
6-18	0.30	UNIT: mm	REV. C	
18-50	0.50			
50-120	0.70	Drawn / Date	Checked / Date	Approved / Date
120-250	0.90	B.ZHANG 01-16-03	01-16-03	JJH / 01-16-03
250-500	1.20			

# Mouser Electronics

Authorized Distributor

Click to View Pricing, Inventory, Delivery & Lifecycle Information:

[Qualtek:](#)

[862-06/003](#)