

Actual information about approvals can be found on
<http://www.schurter.com/approvals>



without voltage selector



without voltage selector



with voltage selector

C14



70° C



Plug removal necessary for fuse replacement

Description

- Panel mount:
 - Snap-in or screw-on mounting from front side
- 4 Functions:
 - Inlet Protection class I, Fuseholder for fuse-links 5 x 20 mm 1- or 2-pole, with or without voltage selector (step switch), Line filter in standard and medical version
- Quick connect terminals
- Alternative: version without line filter

Characteristics

- All single elements are already wired
- Plug removal necessary for fuse-link replacement
 - The fuse drawer "Fingergrip" can be removed by hand
 - For added safety "Extra-Safe" fuse drawers are available
 - Fuse drawer meets requirements of medical standard IEC/EN 60601-1
 - The fuseholder is accessible from the equipment front
- Qualified for use in equipment according IEC/EN 60950

Other versions on request:

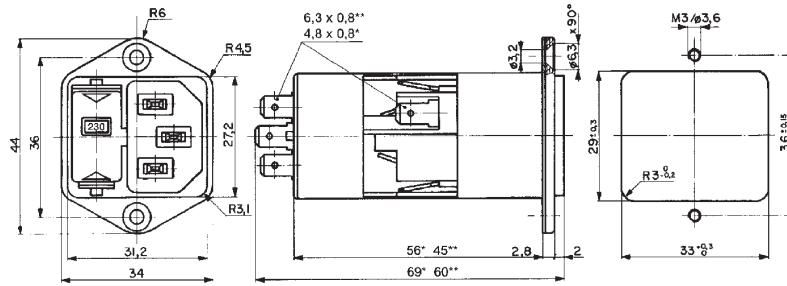
- medical version M80

Technical data

Ratings IEC	1 - 10 A @ Ta 40 °C / 250 VAC; 50 Hz	Appliance-inlet /-outlet	C14 acc. to IEC/EN 60320-1, UL 498, CSA C22.2 no. 42 (for cold condition) pin-temperature 70 °C, 10 A, Protection class I
Ratings UL/CSA	1 - 10 A @ Ta 40 °C / 125 VAC; 60 Hz	Fuseholder	1- or 2-pole, Shocksave category PC2 acc. to IEC/EN 60127-6, for fuse-links 5 x 20 mm. See page 7
Leakage current	standard < 0.5 mA (250 V / 60 Hz) medical < 5 µA (250 V / 60 Hz)	Rated power acceptance @ Ta 23 °C	5 x 20: 2 W (1-pole)/ 1.6 W (2-pole) per pole
Dielectric strength	> 1.7 kVDC between L-N > 2.7 kVDC between L/N-PE Test voltage (2 sec)	Power acceptance @ Ta > 23°C	Admissible power acceptance at higher ambient temperature see derating curves. Take note of the information on page 5
Allowable operation temp.	-25 °C to 85 °C	Voltage selector	optional, step, 3 digits
Climatic category	25/085/21, IEC 60068-1	Line filter	Standard and medical version, IEC 60939, IEC 60601-1, UL 1283, UL 544, EN 133 200, CSA C22.2 no. 8
Degree of protection	from front side IP40 acc. to IEC 60529		
Protection class	Suitable for appliances with protection class I acc. to IEC 61140		
Terminals	Quick connect terminals 6.3 x 0.8 mm With voltage selector: quick-connect terminals 4.8 x 0.8 mm		
Panel thickness s	Screw-on: max 8 mm Mounting screw torque max 0.5 Nm Snap-in: 0.8 mm to 3 mm		
Materials: Housing	Thermoplastic, black, UL 94V-0		

Dimensions

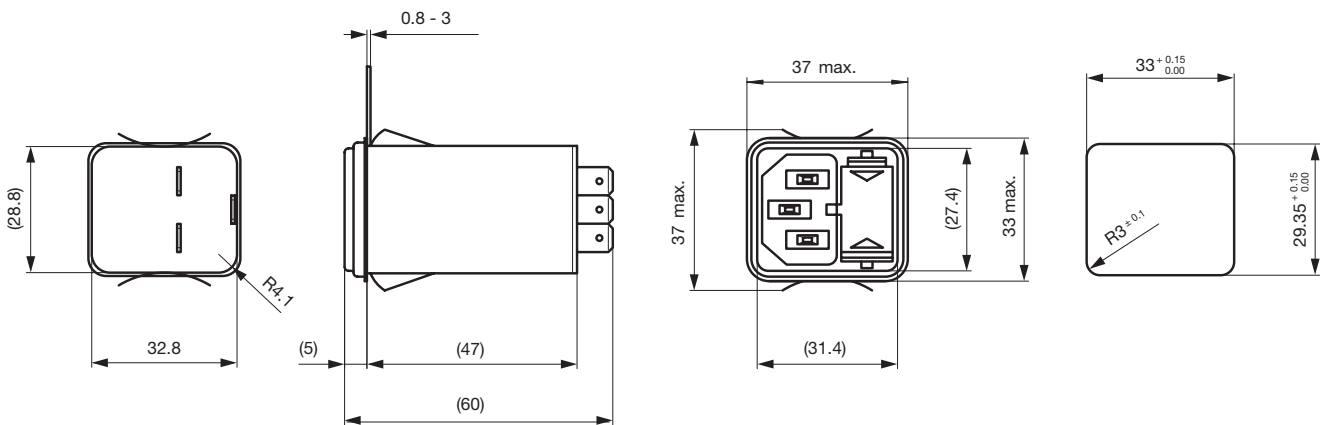
Screw-on mounting



* with voltage selector

** without voltage selector

Snap-in mounting

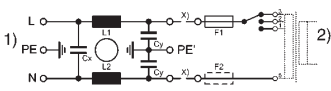


Technical data of filter-components

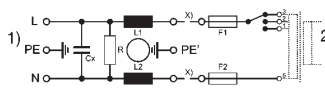
Rated current [A]	Filter-Type	Inductances L [mH]	Capacitance CX [nF]	Capacitance CY [nF]	R [MΩ]
1	Standard Version	2 x 10	68	2.2	
2	Standard Version	2 x 4	68	2.2	
4	Standard Version	2 x 1.5	68	2.2	
6	Standard Version	2 x 0.8	68	2.2	
10	Standard Version	2 x 0.3	68	2.2	
1	Medical Version (M5)	2 x 10	68		1
2	Medical Version (M5)	2 x 4	68		1
4	Medical Version (M5)	2 x 1.5	68		1
6	Medical Version (M5)	2 x 0.8	68		1
10	Medical Version (M5)	2 x 0.3	68		1

Diagrams

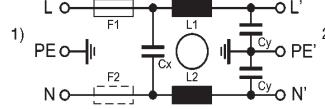
Standard version
with fuseholder 1- or 2-pole



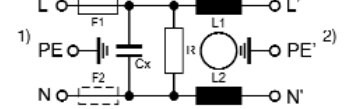
Medical version
with fuseholder 2-pole



Standard version
without voltage selector



Medical version
without voltage selector



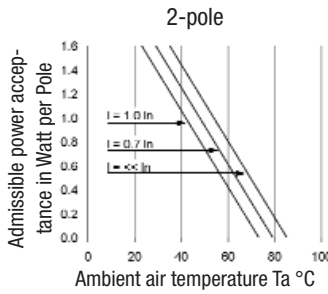
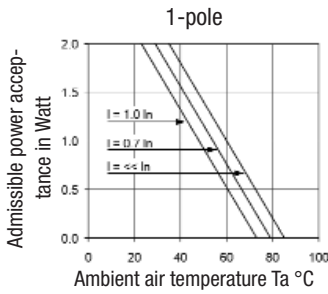
1) Line; 2) Load; x) external connection to be made by the customer

1) Line; 2) Load; x) external connection to be made by customer

1) Line
2) Load

1) Line
2) Load

Derating curves

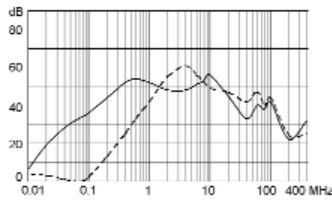


Attenuation loss

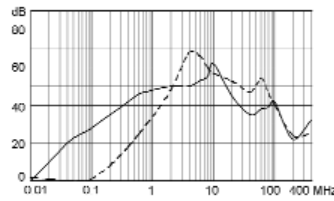
--- differential mode _____ common mode

Standard version

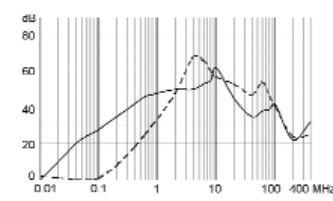
1 A



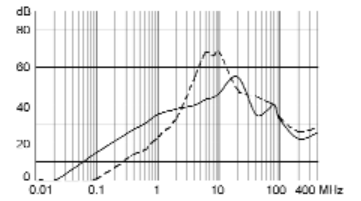
2 A



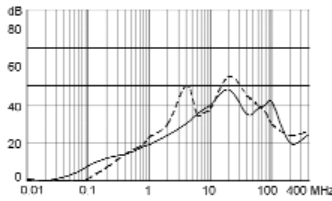
4 A



6 A

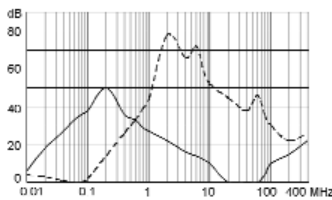


10 A

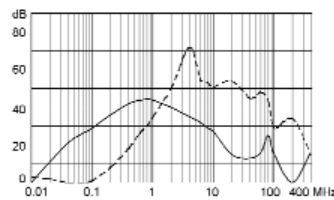


Medical version

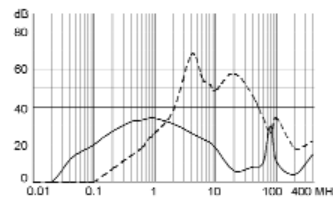
1 A



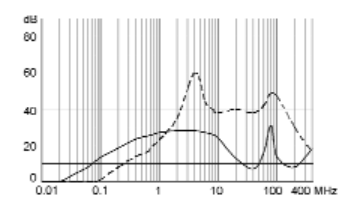
2 A



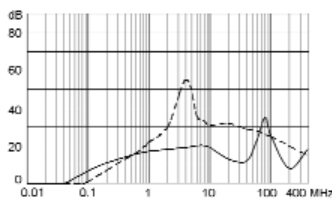
4 A



6 A



10 A



Variants

Order Number	Rated current [A]	Filter-Type	Panel mounting	Fuseholder	Voltage selector
4301.6011	1	Standard Version	Snap-in	1-pole	
4301.6012	2	Standard Version	Snap-in	1-pole	
4301.6013	4	Standard Version	Snap-in	1-pole	
4301.6014	6	Standard Version	Snap-in	1-pole	
4301.6015	10	Standard Version	Snap-in	1-pole	
4301.6001	1	Standard Version	Snap-in	2-pole	
4301.6002	2	Standard Version	Snap-in	2-pole	
4301.6003	4	Standard Version	Snap-in	2-pole	
4301.6004	6	Standard Version	Snap-in	2-pole	
4301.6005	10	Standard Version	Snap-in	2-pole	
4301.5011	1	Standard Version	Screw-on	1-pole	
4301.5051	1	Standard Version	Screw-on	1-pole	3 digits
4301.5012	2	Standard Version	Screw-on	1-pole	
4301.5052	2	Standard Version	Screw-on	1-pole	3 digits
4301.5013	4	Standard Version	Screw-on	1-pole	
4301.5053	4	Standard Version	Screw-on	1-pole	3 digits
4301.5014	6	Standard Version	Screw-on	1-pole	
4301.5054	6	Standard Version	Screw-on	1-pole	3 digits
4301.5015	10	Standard Version	Screw-on	1-pole	
4301.5055	10	Standard Version	Screw-on	1-pole	3 digits
4301.5001	1	Standard Version	Screw-on	2-pole	
4301.5041	1	Standard Version	Screw-on	2-pole	3 digits
4301.5002	2	Standard Version	Screw-on	2-pole	
4301.5042	2	Standard Version	Screw-on	2-pole	3 digits
4301.5003	4	Standard Version	Screw-on	2-pole	
4301.5043	4	Standard Version	Screw-on	2-pole	3 digits
4301.5004	6	Standard Version	Screw-on	2-pole	
4301.5044	6	Standard Version	Screw-on	2-pole	3 digits
4301.5005	10	Standard Version	Screw-on	2-pole	
4301.5045	10	Standard Version	Screw-on	2-pole	3 digits
4301.6201	1	Medical Version (M5)	Snap-in	2-pole	
4301.6203	2	Medical Version (M5)	Snap-in	2-pole	
4301.6205	4	Medical Version (M5)	Snap-in	2-pole	
4301.5217	6	Medical Version (M5)	Screw-on	1-pole	
4301.5241	1	Medical Version (M5)	Screw-on	2-pole	3 digits
4301.5243	2	Medical Version (M5)	Screw-on	2-pole	3 digits
4301.5245	4	Medical Version (M5)	Screw-on	2-pole	3 digits
4301.5247	6	Medical Version (M5)	Screw-on	2-pole	3 digits
4301.5209	10	Medical Version (M5)	Screw-on	2-pole	
4301.5249	10	Medical Version (M5)	Screw-on	2-pole	3 digits

Packaging unit 10 Pcs

ACCESSORIES

Order Numbers fuse drawer (Fingerrip and Extra-Safe) (to types KEA, KEA-Print, KFA, KM)

Voltage markings	for types	Type	Type		1-pole + spare fuse case	2-pole with shorting bar in the neutral side
			1-pole	2-pole		
«XX» see table 1	KEA, KFA	Fingerrip	4301.1214.XX	4301.1014.XX	4301.2814.XX	4301.3536.XX
«XX»		Extra-Safe	4301.1224.XX	4301.1024.XX	4301.2824.XX	4301.3537.XX
without voltage selector	KEA, KEA-Print, KFA (KM*)	Fingerrip	4301.1405	4301.1401	4301.1409	4301.1413
without voltage selector	KEA, KEA-Print, KFA (KM*)	Extra-Safe	4301.1407	4301.1403	4301.1411	4301.1415

* only 1-/2-pole

Table 1

Index XX	Voltage markings/terminal no			
	1	2	3	4
01	110	150	220	–
02	120	–	240	–
03	110	–	220	–
04	115	–	220	–
05	110	–	230	–
06	115	–	230	–
07	100	110	220	240
08	100	120	220	240
09	110	–	117	–
10	220	–	240	–
11	120	220	240	–
12	110	220	240	–

Table 1

Index XX	Voltage markings/terminal no			
	1	2	3	4
13	115	220	240	–
14	–	–	–	–
15	100	120	220	–
16	50 Hz	–	60 Hz	–
17	220	–	110	–
18	110	240	220	–
19	117	220	240	–
20	100	110	127	230
21	110	120	220	–
22	110	220	230	–
23	100	115	220	240
24	115	230	240	–

Other versions on request:

- for protection class II
- KEA with solder terminals
- Fuse drawer with other voltage values

Cord retaining kits

For protection against loosening or accidental disconnection of the plug connector. Can also be mounted later.

The correct kit type for the combination of fixed and free components is shown in the selection chart.

KEA snap-in components require additional drilling for the cord retaining kit as shown in the panel cut-out of the KFA screw-on mounting.

Each cord retaining kit consists of:

- 1 Stainless steel retaining clip
- 2 Nickel plated brass pillars
- 2 Nickel plated brass nuts
- 2 Nickel plated beryllium copper crinkle washers



Cut-aways or countersinks on pillars to face inwards.

Cord Retaining Kit Selector Chart

Type	KFA	KFA
Connector for cable	Snap-in	Screw-on
4782.0000	4700.0001	4700.0002
4782.0100		