

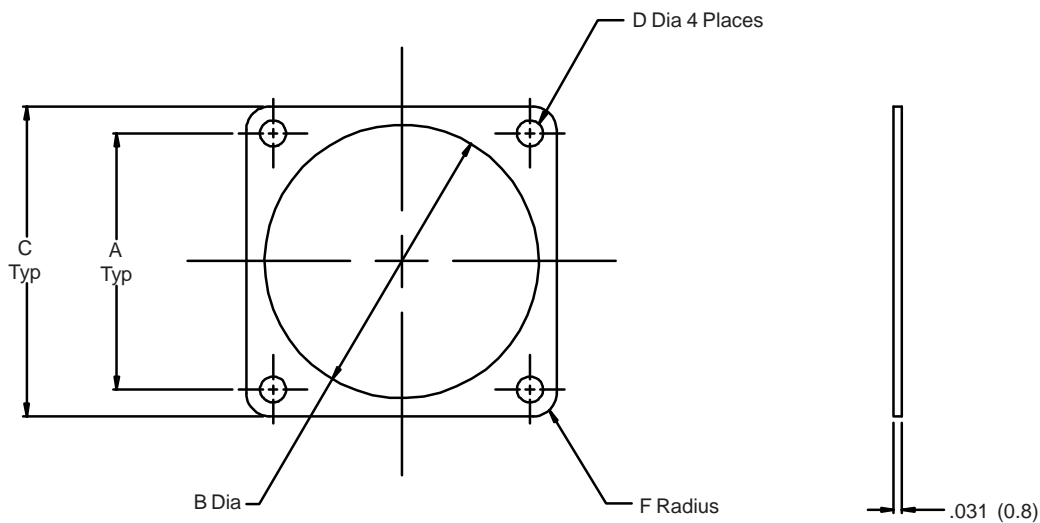
930 - 004 F 10

Product Series \_\_\_\_\_

Basic Number \_\_\_\_\_

Dash Number (Table I) \_\_\_\_\_

Material Symbol (Table II) \_\_\_\_\_



**NOTES:**

1. Identified by bag and tag in suitable quantities.
2. Metric dimensions (mm) are indicated in parentheses.

**930-004**  
**Gasket for MIL-DTL-5015 and MIL-C-22992**  
**Class C - J and R Receptacle Connectors**



Miscellaneous  
Accessories

**TABLE I: DASH NUMBER**

Dash No.	MIL-C-22992											
	MIL-DTL-5015	Class C J & R	A		B Dia		C		D Dia		F Rad	
			±.010	(0.3)	+0.016 -0	(+0.4 -0)	+0.016 -0	(+0.4 -0)	±.010	(0.1)	±.010	(0.3)
1	8S	-	.594	(15.1)	.500	(12.7)	.875	(22.2)	.172	(4.4)	.141	(3.6)
2	10S & 10SL	-	.719	(18.3)	.625	(15.9)	1.000	(24.4)	.172	(4.4)	.141	(3.6)
3	12 & 12S	-	.812	(20.6)	.750	(19.1)	1.094	(27.8)	.172	(4.4)	.141	(3.6)
4	14 & 14S	12	.906	(23.0)	.875	(22.2)	1.188	(30.2)	.172	(4.4)	.141	(3.6)
5	16 & 16S	14	.969	(24.6)	1.000	(25.4)	1.281	(32.5)	.172	(4.4)	.156	(4.0)
6	18	16	1.062	(27.0)	1.125	(28.6)	1.375	(34.9)	.203	(5.2)	.156	(4.0)
7	20	18	1.156	(29.4)	1.250	(31.8)	1.500	(38.1)	.203	(5.2)	.172	(4.4)
8	22	20	1.250	(31.8)	1.375	(34.9)	1.625	(41.3)	.203	(5.2)	.188	(4.8)
9	24	22	1.375	(34.9)	1.500	(38.1)	1.750	(44.5)	.203	(5.2)	.188	(4.8)
10	28	24	1.562	(39.7)	1.750	(44.5)	2.000	(50.8)	.203	(5.2)	.219	(5.6)
11	28	-	2.188	(55.6)	1.750	(44.5)	2.688	(68.3)	.203	(5.2)	.250	(6.4)
12	32	28	1.750	(44.5)	2.000	(50.8)	2.250	(57.6)	.219	(5.6)	.250	(6.4)
13	36	32	1.938	(49.2)	2.188	(55.6)	2.500	(63.5)	.219	(5.6)	.281	(7.1)
14	40	36	1.188	(30.2)	2.438	(61.9)	2.750	(69.9)	.219	(5.6)	.281	(7.1)
15	18*	-	1.062	(27.0)	1.220	(31.0)	1.375	(34.9)	.203	(5.2)	.156	(4.0)

\*Fits Amphenol GT Series

**TABLE II: MATERIAL**

Symbol	Material Description
<b>C</b>	Conductive — Metex
<b>F</b>	Fluorosilicone
<b>M</b>	Conductive — Con-Sil II
<b>N</b>	Neoprene
<b>S</b>	Silicone

Metric Dimensions (mm) are indicated in parenthesis.

# Mouser Electronics

Authorized Distributor

Click to View Pricing, Inventory, Delivery & Lifecycle Information:

## Glenair:

[930-004C01](#) [930-004C02](#) [930-004C03](#) [930-004C04](#) [930-004C10](#) [930-004C14](#) [930-004F08](#) [930-004M05](#) [930-004M07](#) [930-004N01](#) [930-004N02](#) [930-004N03](#) [930-004N04](#) [930-004N05](#) [930-004N06](#) [930-004N07](#) [930-004N08](#) [930-004N09](#) [930-004N10](#) [930-004N12](#) [930-004N14](#) [930-004S02](#) [930-004M08](#) [930-004C12](#) [930-004C05](#) [930-004C07](#) [930-004C08](#) [930-004C13](#) [930-004C09](#)