

SPRING-LOADED CONNECTORS

SERIES 319, 399 • .100" GRID CONCAVE FACE TARGET CONNECTORS FOR SPRING-LOADED ASSEMBLIES • SINGLE ROW STRIPS

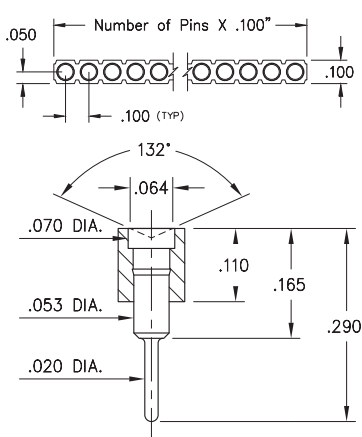
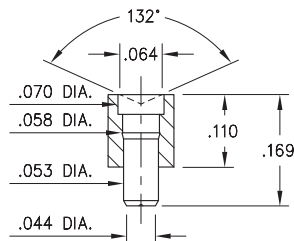
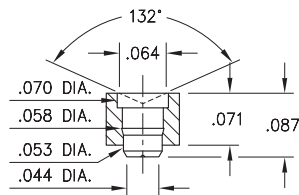


FIG. 1



Coplanarity .005". For Pin counts >10 positions, consult Technical Support.

FIG. 2



Coplanarity .005". For Pin counts >10 positions, consult Technical Support.

FIG. 3

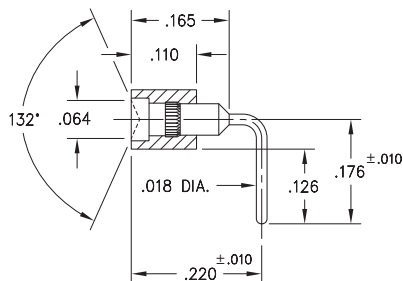
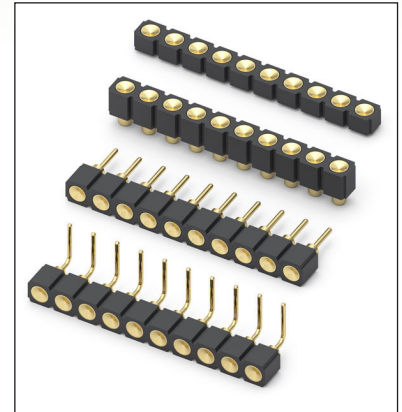


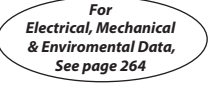



FIG. 4

- Series 319 and 399 Spring Target Connectors, supplied in single row strips. Available in SMT and right angle through-hole termination configurations
- Target Connectors provide an excellent gold-plated conductive mating surface for spring loaded connectors. These series are offered with a concave face for making contact with our standard .042" dia. spring pin plungers
- Target connectors use MM #1948, #1955, #1957 and #1960 pins. See pages 223.1, 223.2 and 223.3 for details
- Insulators are high temperature thermoplastic



ORDERING INFORMATION

	Series 319...006	Standard Solder Tails
FIG. 1	319-10-1	-00-006000
	Specify number of pins	01-64
	Series 319...007	Surface Mount
FIG. 2	319-10-1	-30-007000
	Specify number of pins	01-64
	Series 319...055	Low Profile Surface Mount
FIG. 3	319-10-1	-30-055000
	Specify number of pins	01-64
	Series 399...007	Right Angle Solder Tails
FIG. 4	399-10-1	-10-007000
	Specify number of pins	01-64
  		
SPECIFY PLATING CODE XX=	10	
Pin Plating 	10 μ" Au	



Mouser Electronics

Authorized Distributor

Click to View Pricing, Inventory, Delivery & Lifecycle Information:

[Mill-Max:](#)

[319-10-164-00-006000](#) [399-10-112-10-007000](#) [399-10-114-10-007000](#) [399-10-108-10-007000](#) [399-10-116-10-007000](#) [399-10-109-10-007000](#) [399-10-124-10-007000](#)