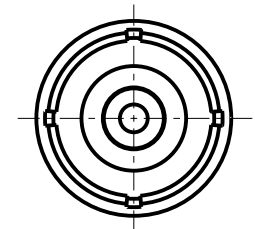
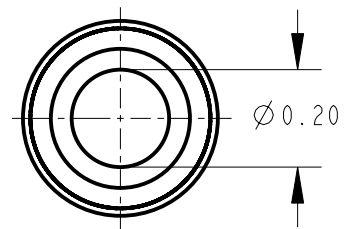
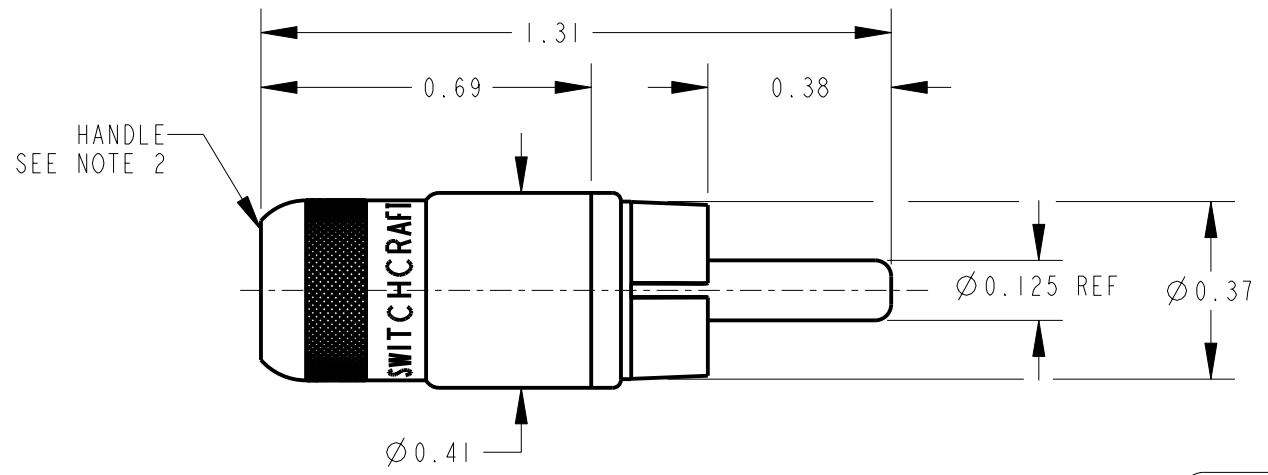


SCALE 2:1

NOTES:

- MATERIALS:
HANDLE, HOUSING & PIN - COPPER ALLOY, NICKEL PLATED
INSULATING WASHERS - PHENOLIC
CLAMP TERMINAL - STEEL, TIN PLATED
- K221 HANDLE KIT SHIPPED UNASSEMBLED.
- THIS PRODUCT IS RoHS COMPLIANT.



CUSTOMER DRAWING

					★ STAR SYMBOL DENOTES CRITICAL DIMENSION	THIS DRAWING DESCRIBES A DESIGN CONSIDERED PROPRIETARY IN NATURE, DEVELOPED AND MANUFACTURED BY SWITCHCRAFT INC. AND IS RELEASED ON A CONFIDENTIAL BASIS FOR IDENTIFICATION PURPOSES ONLY.					
					UNLESS OTHERWISE SPECIFIED	SIZE	WIDTH	MULT	LBS/M	TEMPER	
					1. ALL DIMENSIONS IN INCHES - TWO PLACE DECIMALS ±0.01 - THREE PLACE DECIMALS ±0.005 - ANGLES ±1° - ALL DIA. CONCENTRIC WITHIN 0.005 T.I.R.	FINISH			MATERIAL		
					2. FEATURES ON THE SAME CENTERLINE MUST BE ALIGNED WITHIN ±0.002	SPEC No.			SPEC No.		
					3. REMOVE ALL BURRS	FIRST USED ON		SCALE 5:2		Switchcraft®	
E	27141 REDRAWN	5-7-13	TO	TJK	DATE DRAWN	BY	CHKD	APVD	SHEET		OF
REV	ECO NUMBER	DATE	BY	APVD	15-Apr-13	TO	4-15-13	TJK	4-15-13		
REVISIONS					DO NOT SCALE DRAWING	NAME			PART No.		REV
						PHONO PLUG ASSEMBLY, RoHS			3502		E



Mouser Electronics

Authorized Distributor

Click to View Pricing, Inventory, Delivery & Lifecycle Information:

[Switchcraft:](#)

[3502](#)