

5

4

3

2

1

受控 CONTROLLED DOCUMENT					
编号 P/N	32-2900-CUST	版本 Rev	01	日期 Rel'd Date	SEP 17,09

DRAWING NO.  
32-2900-XX-CUST(SEE TABLE I)

REVISIONS

01	OFFICIAL RELEASE			
	08-05-09	Y U	Y U	T H

*Betty* 2009.05.11  
614:02:09  
+08000

D



Description: See Table I  
 Part No: See Table I  
 Application: RJ45 Boot  
 Crimp Tool: N/A  
 Impedance: N/A  
 Frequency Range: N/A  
 Material: Boot PVC  
 RoHS Compliance: Yes  
 Technical Detail: N/A

C

B

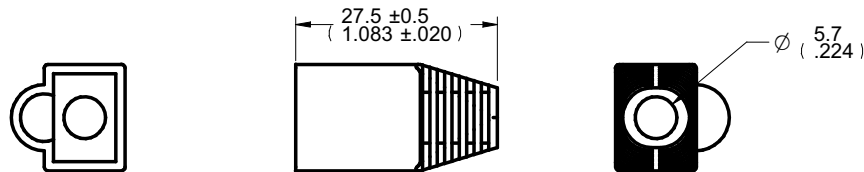
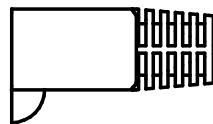


TABLE I

PART NUMBER	DESCRIPTION
32-2900WH	RJ45 MOD PLUG RND BOOT, WHITE
32-2900RE	RJ45 MOD PLUG RND BOOT, RED
32-2900GN	RJ45 MOD PLUG RND BOOT, GREEN
32-2900BU	RJ45 MOD PLUG RND BOOT, BLUE
32-2900BK	RJ45 MOD PLUG RND BOOT, BLACK

A



**DIM OUTLINE**

TOLERANCE UNLESS OTHERWISE SPECIFIED		DRAWN BY IVON.W	DATE 08-05-09
DECIMALS	mm	CHECKED BY IVON.W	DATE 08-05-09
X	± 0.5	APPROVED BY THOMAS	DATE 08-05-09
X.X	± 0.3	U/M	mm
X.XX	± 0.1		
ANGLES	± 0.5°		



<b>CUSTOMER COPY</b>		
TITLE RJ45 MOD PLUG RND BOOT, WHITE(SEE TABLE I)		
SHEET 1 OF 1	DRAWING NO. 32-2900-XX-CUST (SEE TABLE I)	SIZE A

THIS DRAWING WAS PRODUCED BY COMPUTER,  
DO NOT SCALE DRAWING OR UPDATE MANUALLY.

5

4

3

2

1

D

C

B

A

# Mouser Electronics

Authorized Distributor

Click to View Pricing, Inventory, Delivery & Lifecycle Information:

[Cinch Connectivity Solutions:](#)

[32-2900BU](#)